



Google Earth Hydrant User Guide

Version 2.0

Google Earth Hydrant User Guide

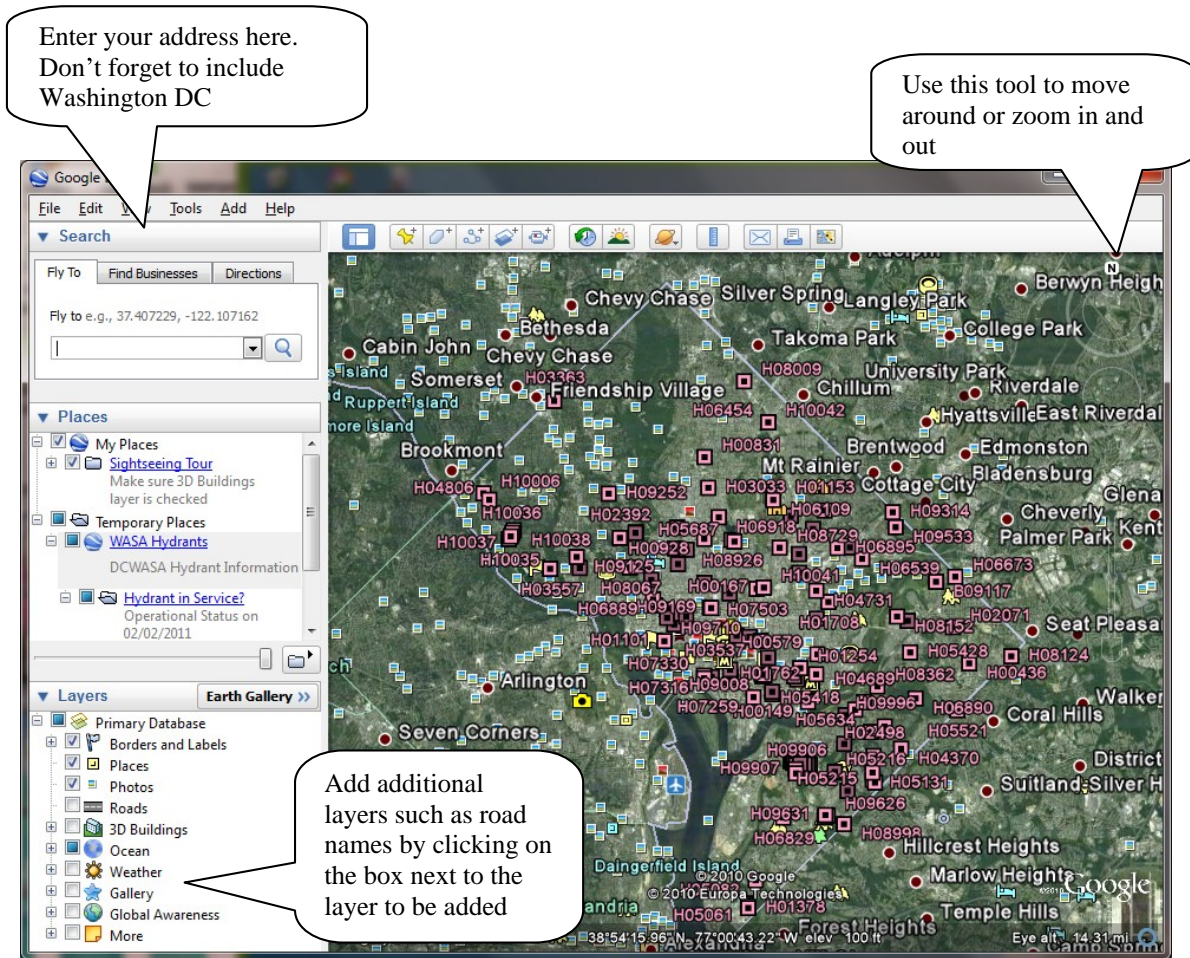
Overview	3
Hydrant Information	4
Reporting a Problem.....	4
Directions	6
View All Hydrants.....	7
Display Road Names	8
My Places	9
Exiting	10

Google Earth Hydrant User Guide

Overview

This application allows you to zoom in to specific locations and view both working and non-working hydrants. Hydrants in service are displayed in purple while hydrants that are out of service are displayed in pink.

Once the Google Earth application has been installed on your computer, click on the link (Status of all known public hydrants in DC) to download the hydrant status file. This will begin the transfer of the file which contains all of the current information on hydrants throughout Washington D.C. Once the file has completed downloading, Google Earth should start automatically. If it doesn't start, a window will open asking if you wish to open the file, select "Yes" or "Open" to have Google Earth launch. Once started it will show a map in a window that will look like this:

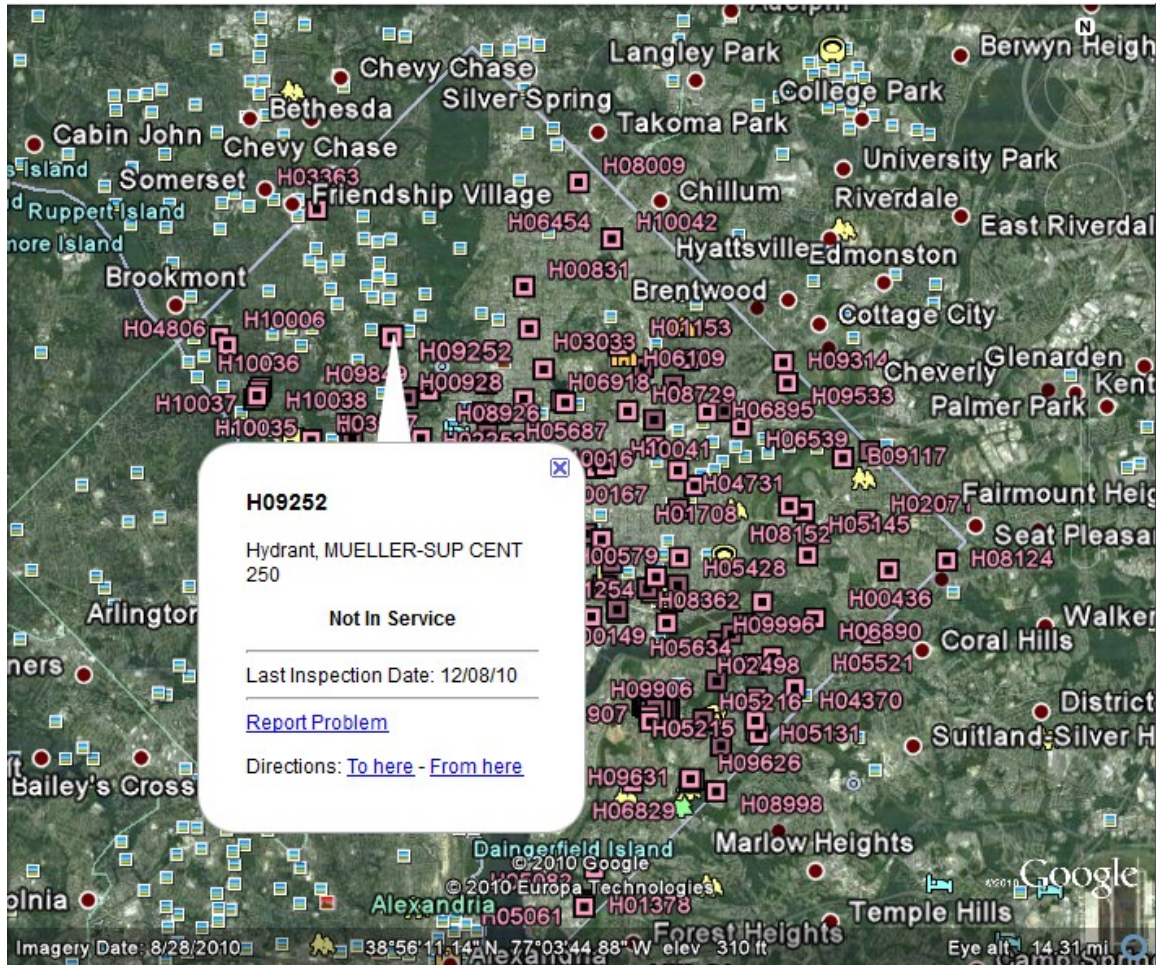


Initial Display

Google Earth Hydrant User Guide

Hydrant Information

Left click on a hydrant to get see its status, last inspection date, Report a problem on that hydrant or get directions.

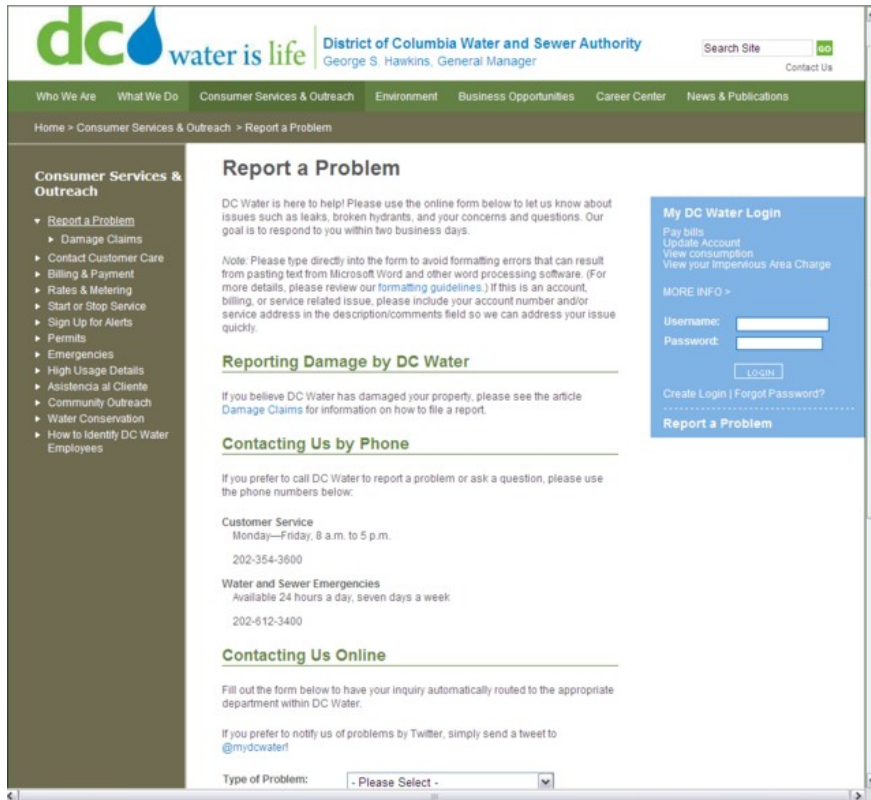


Hydrant Flyout Information

Reporting a Problem

Click on [Report Problem](#) and a new page will be displayed at the bottom of the screen as shown below.

Google Earth Hydrant User Guide



Type in the description of the problem with your name and email address and click Submit. The problem is automatically associated with that specific hydrant.

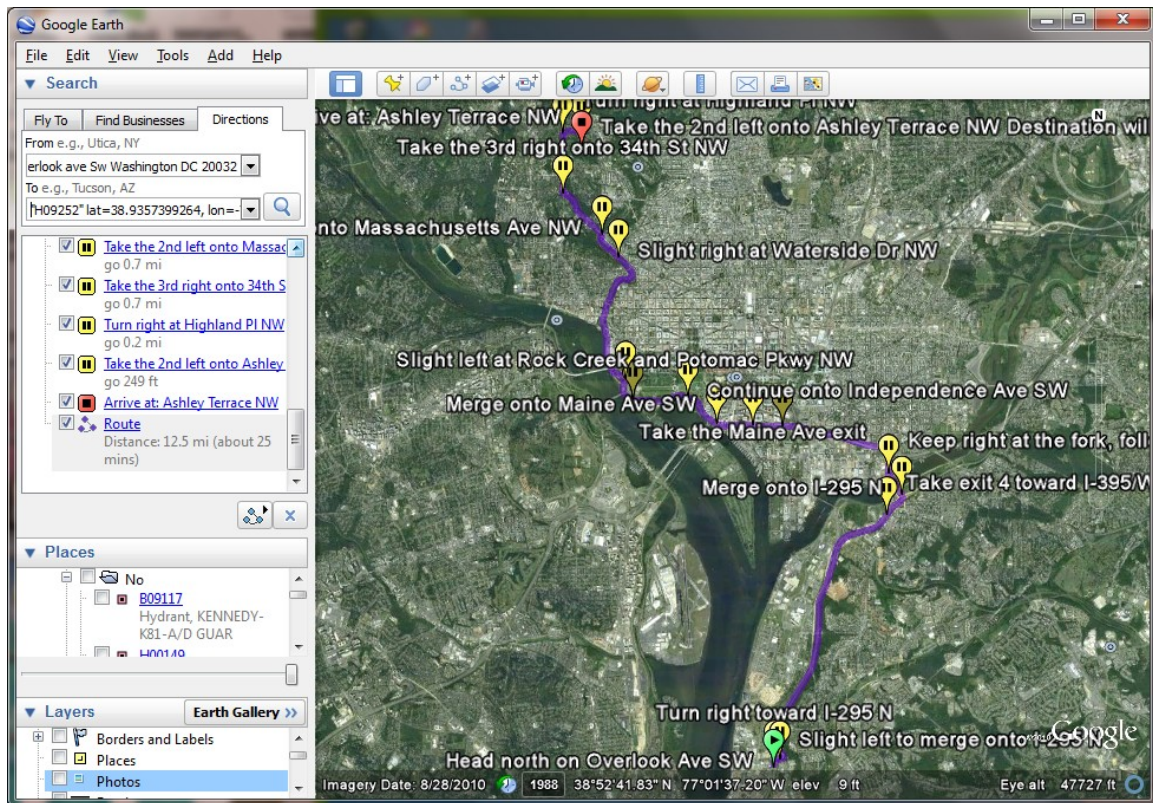
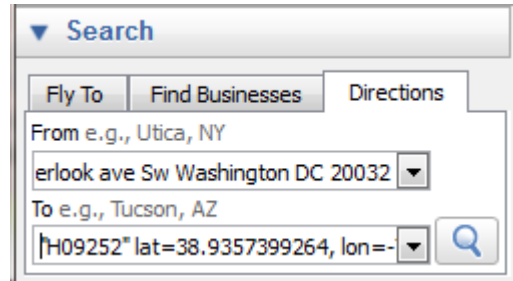
Google Earth Hydrant User Guide

Directions

In this example we clicked on To here. The Directions tab becomes active in the Search Panel. The coordinates for the hydrant are automatically filled in the 'To' box in the Search Panel.

The cursor is focused in the 'From' box. Just type in the address and click on the Magnifying Glass. The map display will show the route.

Turn by turn directions are displayed at the bottom of the Search Panel.

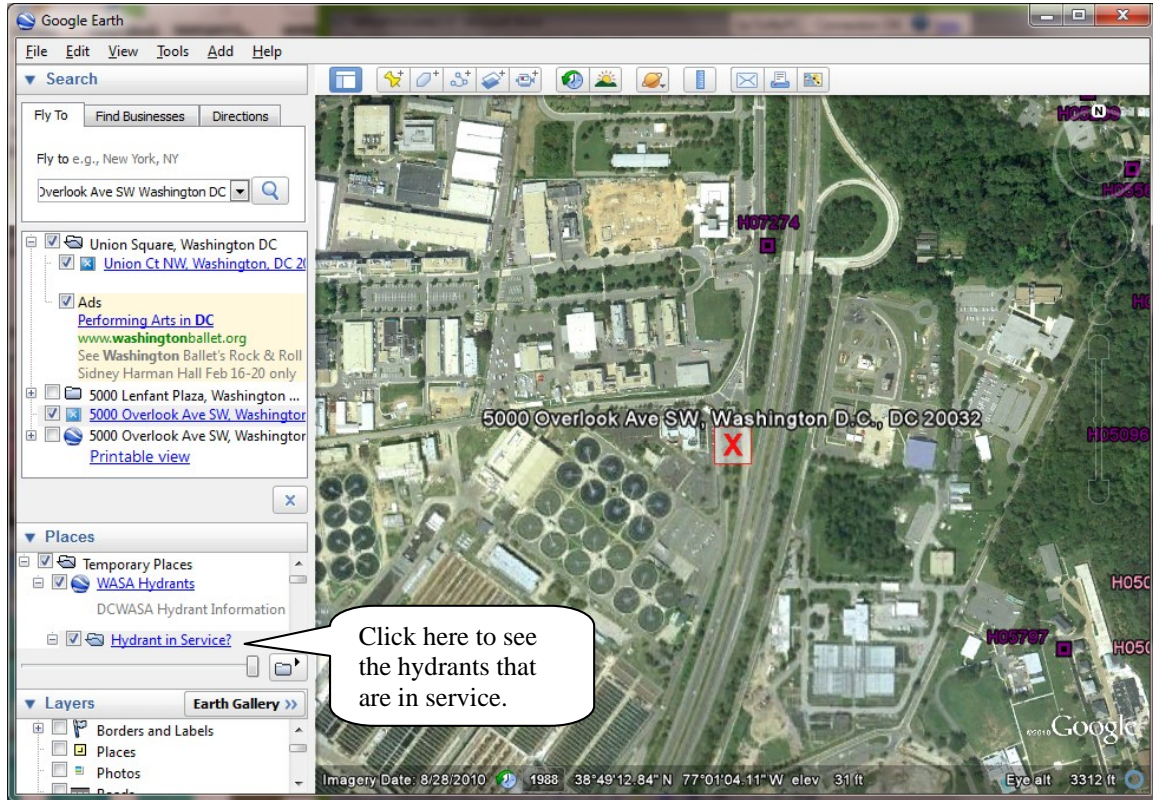


Map with route

Google Earth Hydrant User Guide

View All Hydrants

To view all of the hydrants, click in the box in the Places Panel next to Yes under Hydrants in Service.

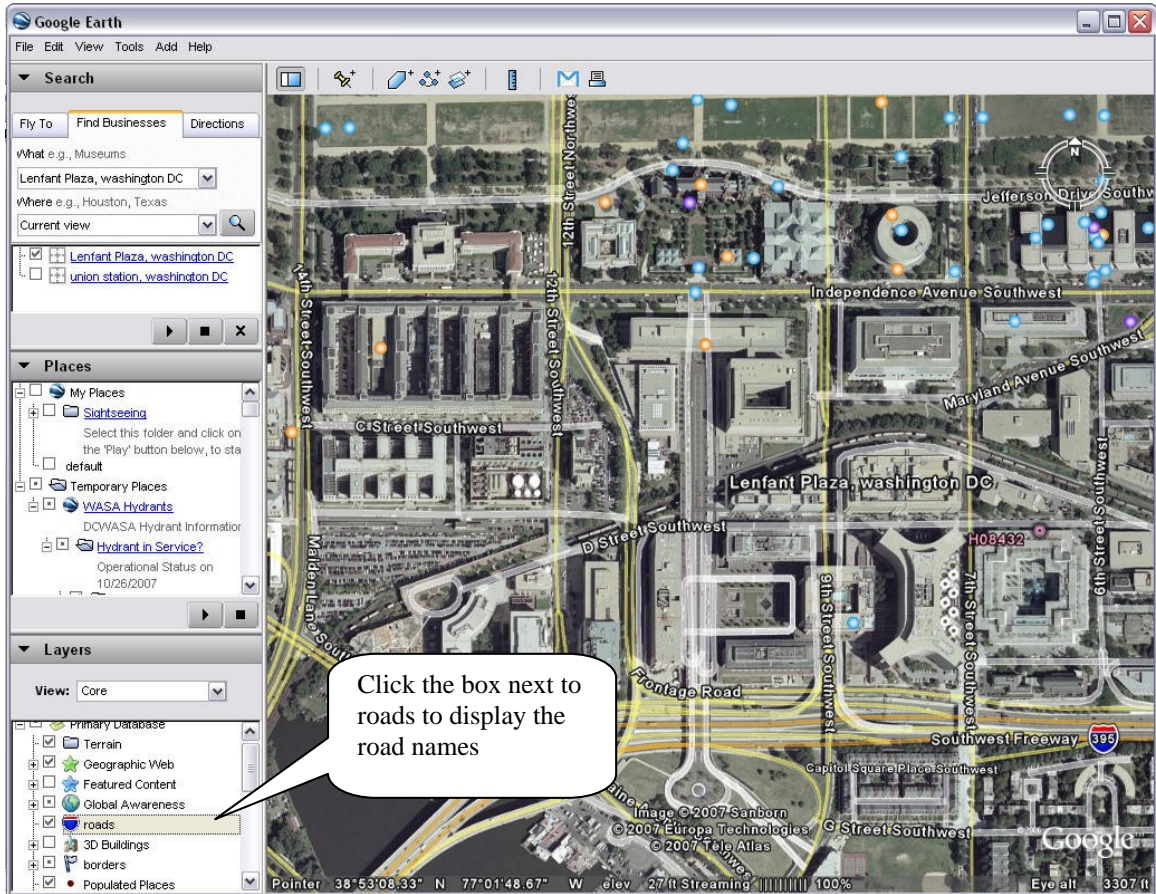


Map with in service hydrants

Google Earth Hydrant User Guide

Display Road Names

We used the Find Business tab in the Search Panel to find Lenfant Plaza. Then we turned on the layer roads in the Layers Panel to label the roads.

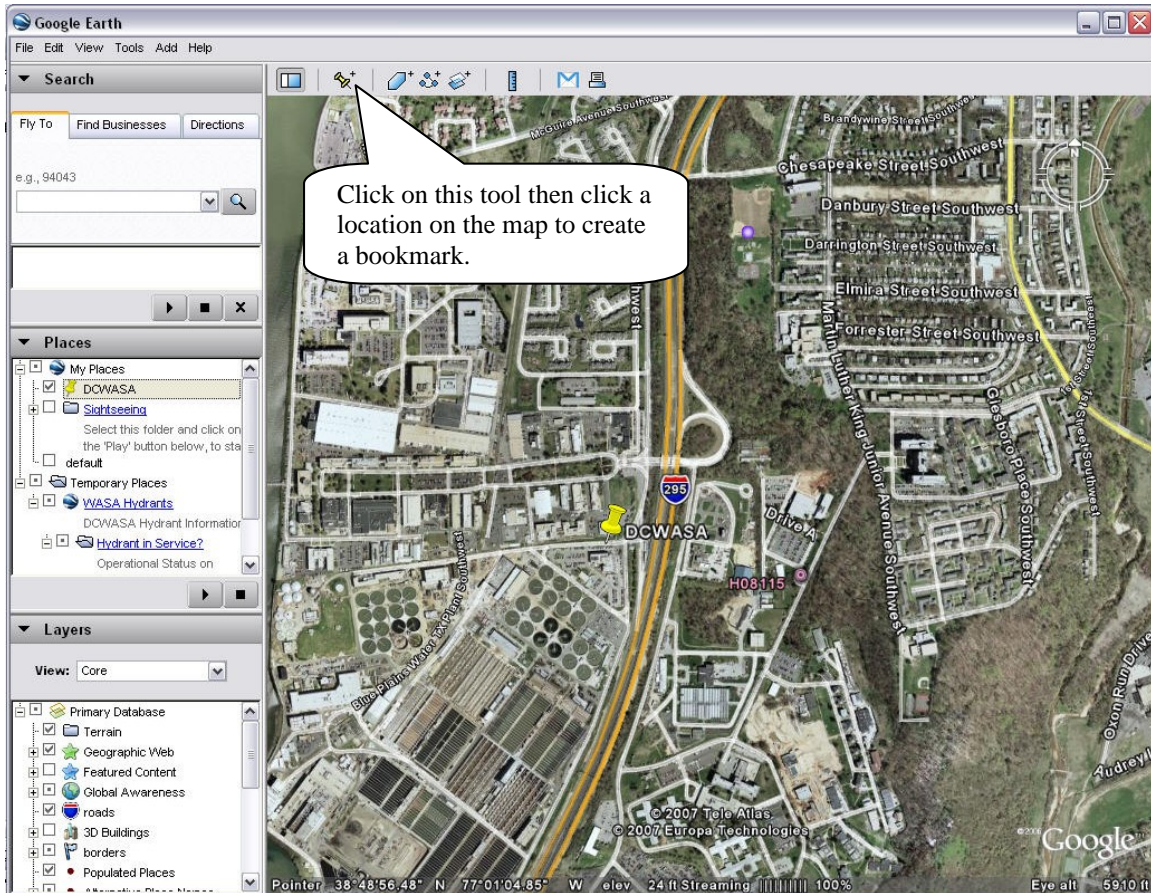


Map with Road Names Displayed

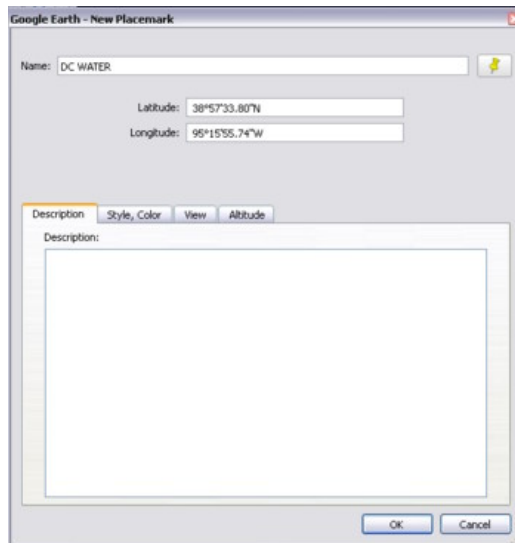
Google Earth Hydrant User Guide

My Places

Use My Places to create a Place mark that can be referred to at a later date.

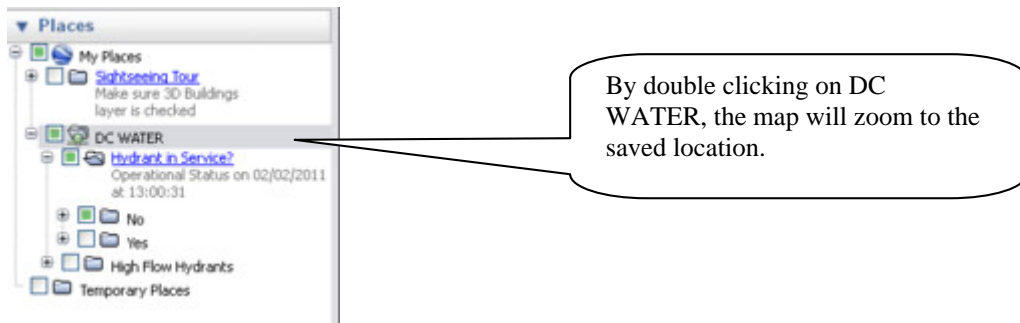


A new window will appear where you can give it a name to be referred to later. In this case, we named it DC WATER.



Google Earth Hydrant User Guide

And it will appear in the Places Panel. You can drag it from the Temporary Places to My Places so it will be saved next time.



Exiting

When you exit Google Earth, it will display a message asking if you want to save the Temporary Places to my Places. We recommend saying no this. If you created a Place Mark, drag that Place mark from The Temporary Places folder to the My Places folder to save it. Hydrant status changes daily and saving it to My Places would save multiple copies and could cause confusion.



For more information on how to use the Google Earth program - including zooming, tilting, searching, etc. - please visit their tutorial linked off of the main fire hydrants page.