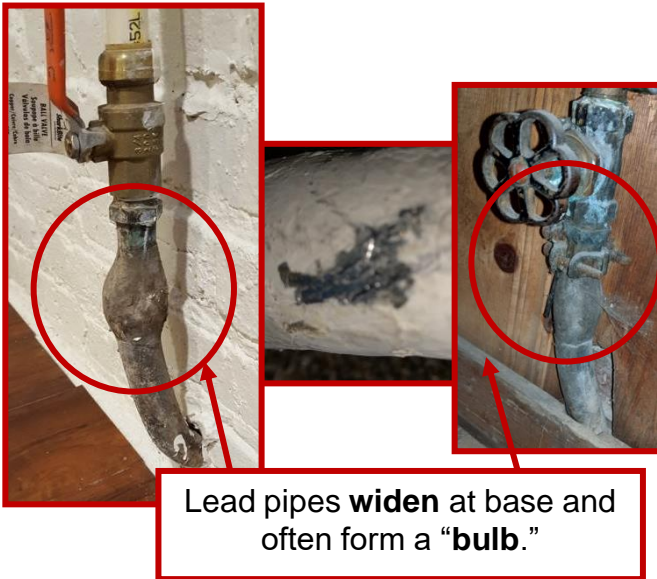


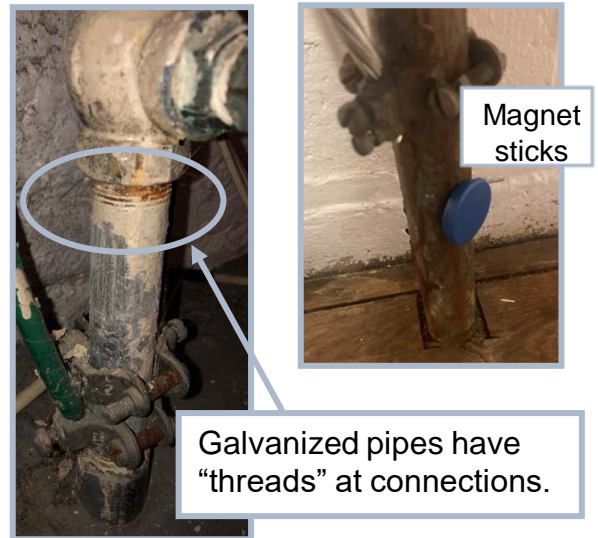
Water Service Pipe Material Identification

| | Lead | Galvanized Iron | Copper | Brass |
|-----------------------------------|---|--|--|--|
| Outer Appearance | Dull gray, bendable; Often curves between wall/floor and valve | Dark gray or black; Straight rigid pipe | Brown; Can have green corrosion spots | Brown; Can have green corrosion spots |
| Threads at connections | None | Yes | None | Yes |
| Scratch Test (coin or key) | Shiny silver | Hard to scratch, remains gray | Copper, like a penny | Gold color |
| Magnet Test | Does not stick | Magnet WILL stick | Does not stick | Does not stick |

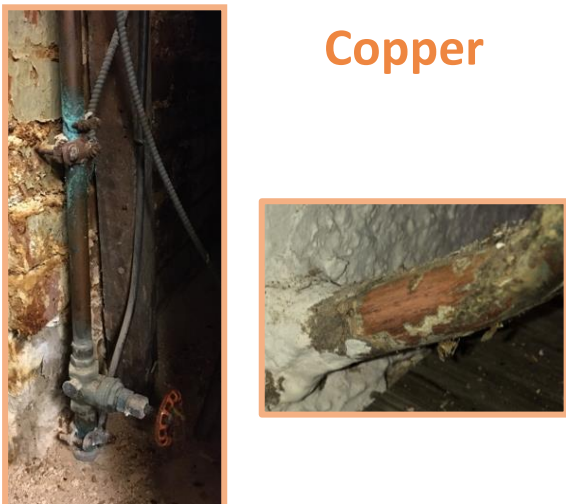
Lead



Galvanized Iron



Copper



Brass





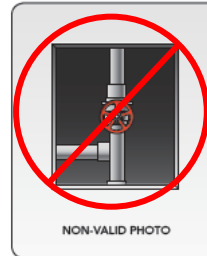
Instructions to Provide Water Pipe Material Information

Step 1

Locate the water service line entering the building. You need to see the pipe where it comes through the floor or wall. In the basement or lowest floor, or whole-house water shut-off valve nearby.



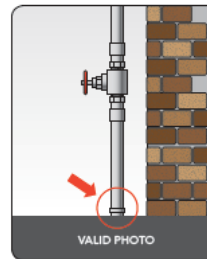
Cannot see where pipe comes through - try to pull back insulation and use phone camera to view pipe at breakthrough.



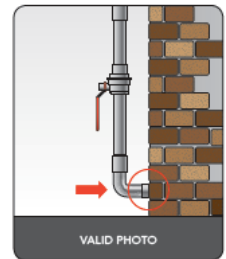
NON-VALID PHOTO



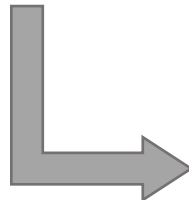
NON-VALID PHOTO



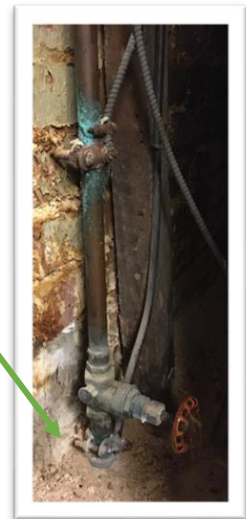
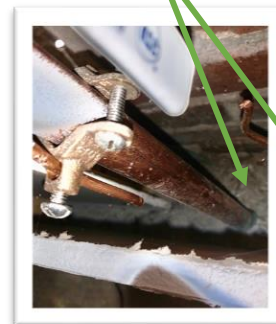
VALID PHOTO



VALID PHOTO



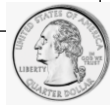
Pipe coming through floor



Step 2

Use Pipe Material Identification Sheet

- Look for threads at connections.
- Scratch pipe with a coin or key to reveal the metal. You may need to scratch through corrosion or paint. Lead is soft and scratches easily.
- See if a kitchen magnet sticks to the pipe. A magnet will not stick to a lead pipe.



Step 3

Take three (3) photos.

1. Pipe coming through wall or floor.
2. Closer view of pipe with scratch.
3. Further view of pipe that includes shut off valve.



Step 4

Send photos to leadtest@dcwater.com.