



**District of Columbia Water and Sewer Authority**  
David L. Gadis, CEO and General Manager

***DC CLEAN RIVERS PROJECT***  
***CSO 25/26 SEWER SEPARATION***  
***GEORGETOWN COMMUNITY***  
***UPDATE***

**June 7, 2022**



# Greetings Neighbors!

## Welcome to our Virtual Public Meeting



### Participation Tips:

- Online meetings are subject to your bandwidth limitations. If your connection to the meeting should freeze, please exit and reenter the meeting to refresh your connection.
- Participants may opt to turn on or off your video.
- All participant lines are muted to minimize disruptions.
- The **Questions and Answers (Q&A) period** will be held at the end of the presentation. **Please hold your questions until the Q&A portion of the meeting.**
- During the Q&A period of the meeting, we will acknowledge questions from participants who are online and on phone.
- **ONLINE PARTICIPANTS:** send your questions to the Host by using the Chat mode. You may also click on “Participants” to raise your hand for a question.
- **PHONE PARTICIPANTS:** press \*9 to alert us that you want to ask a question. We will unmute you when it’s your turn to ask a question.

# Agenda

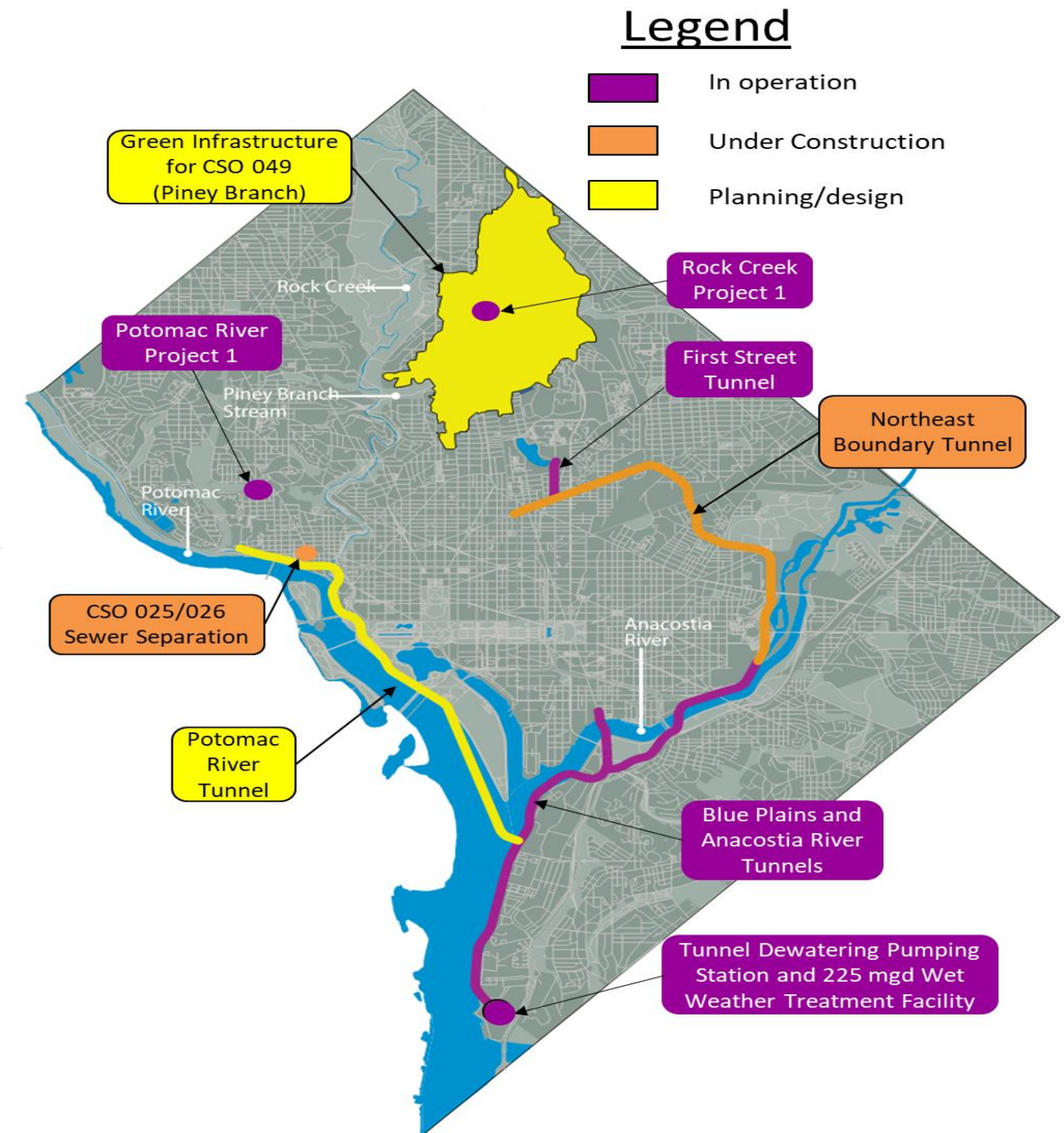
---

- Project Overview
- What are we doing?
  - Sewer Separation
- Potomac River Control Methods
- Site Locations
- Project Schedule
- Construction Site Updates
  - South Street NW
  - 31<sup>st</sup> Street NW
  - Water Street NW
  - Wisconsin Ave. NW
- Questions and Answers
- Questions – you may also send questions to [dccleanrivers@dcwater.com](mailto:dccleanrivers@dcwater.com) or leave a message on the hotline **800-988-6151**



# The DC Clean Rivers Project

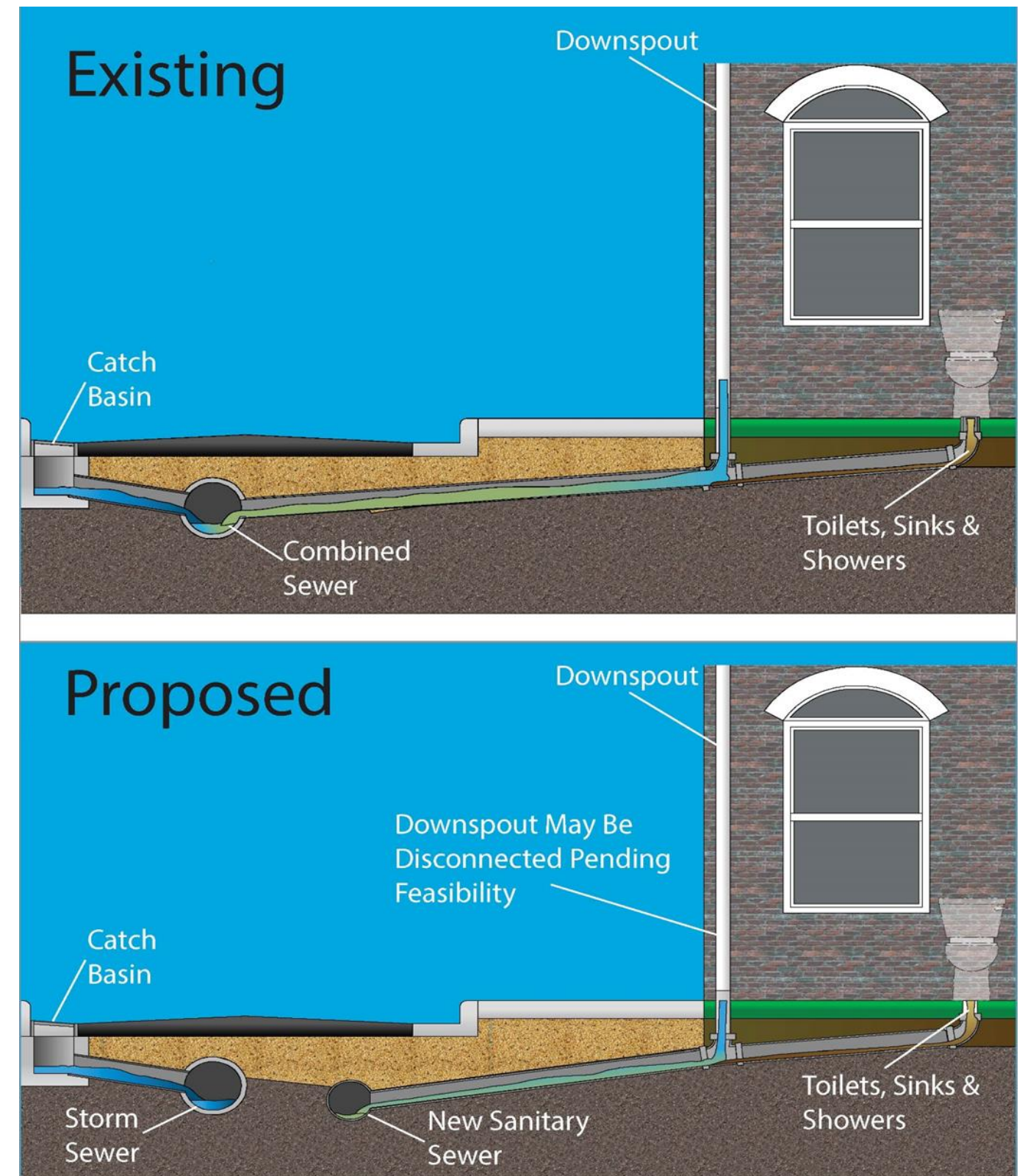
- Control combined sewer overflows to the:
  - Potomac River
  - Anacostia River
  - Rock Creek
- Relieve flooding in the Northeast Boundary Area
- Implemented under a Federal Consent Decree among:
  - US Environmental Protection Agency (US EPA)
  - US Department of Justice (US DOJ)
  - District of Columbia, and
  - DC Water
- Fully in operation by 2030
  - Major intermediate milestones in 2018 and 2023





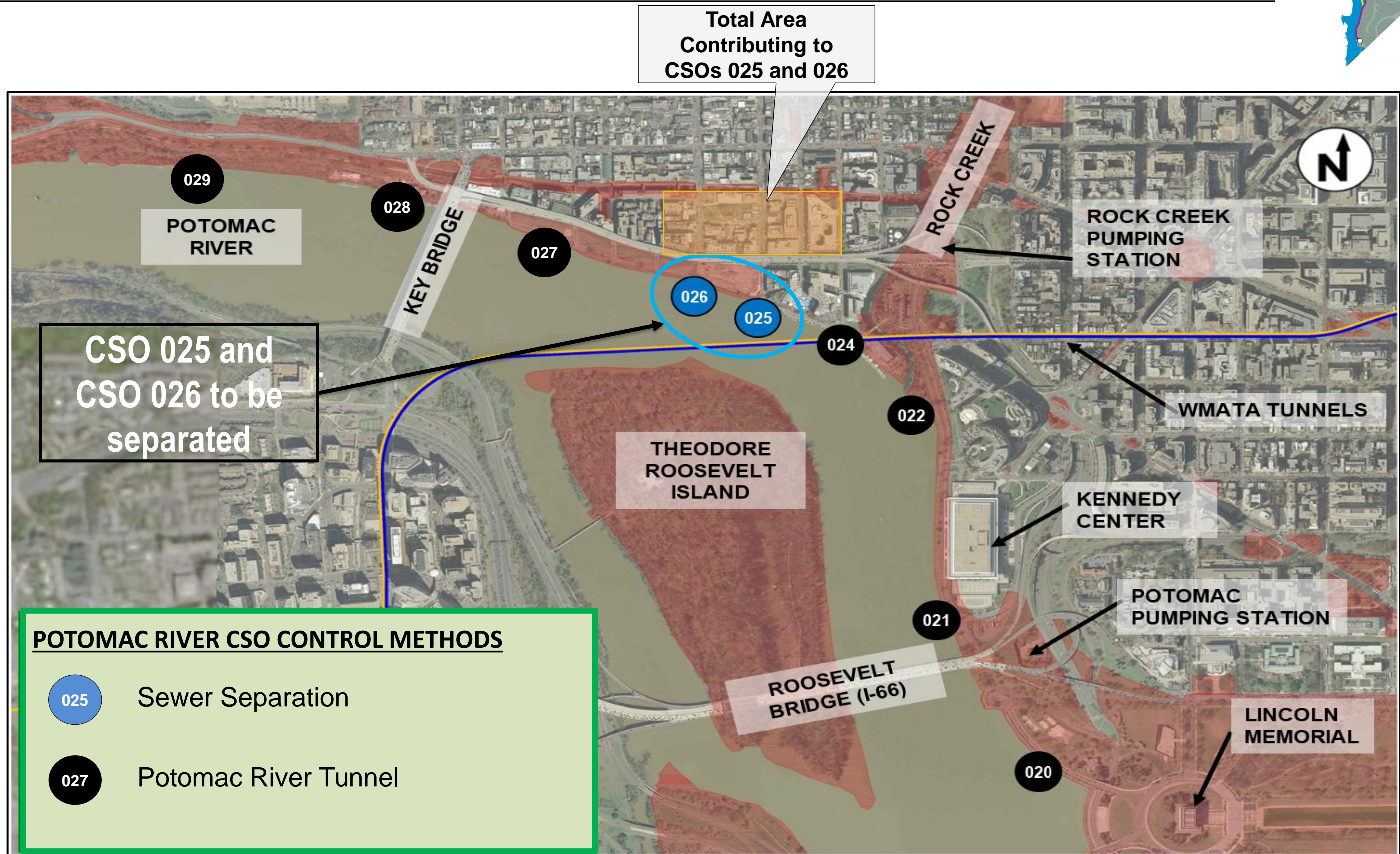
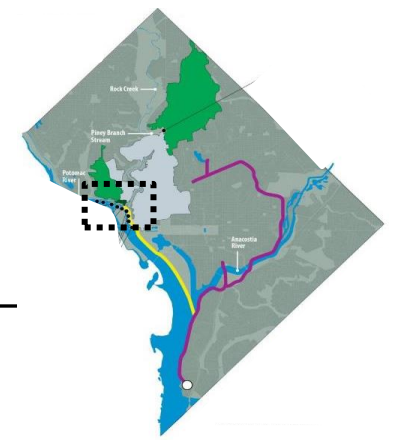
# CSO 025/26 Sewer Separation Project Scope

- Sewer separation of existing combined sewer overflow (CSO) 025 and 026 in Georgetown, Washington, DC
  - Installation of new sanitary sewers, storm sewers, manholes, sewer laterals, cleanouts, and catch basins
  - Connection of existing sewer laterals to new sanitary sewers
  - Relocation of existing watermain lines
  - Connection of proposed sanitary sewers to 48-inch Upper Potomac Interceptor (UPI) sewer
  - Modification to existing combined sewer regulator Structure 44
  - Maintenance of traffic, erosion and sediment control, and site restoration





# Potomac River CSO Control Methods





# CSO 025 and 026 Sewer Separation Project Site Locations





# DCCR Potomac River Projects in Georgetown Anticipated Schedule

## CSO 025 & 026 Sewer Separation

- Completion expected in Fall 2022

## Potomac River Tunnel (PRT)

- Potomac River Tunnel (PRT) Advanced Utility Construction
  - Work in Georgetown associated with this project (CSOs 024, 027, & 028) to occur throughout 2022
- Potomac River Tunnel (PRT) Construction
  - Award contract for construction in Summer 2023/ Place in operation early 2030

Activity	2021		2022												2023				
	Nov	Dec	Jan	Feb	Mar	Apr	May	June	July	Aug	Sept	Oct	Nov	Dec	Jan	Feb	Mar	Apr	May
<b>Project Coordination with Community</b>																			
<b>Outreach Events</b>																			
<b>CSO 025/026 SEWER SEPARATION</b>																			
<b>South Street NW - Construction Activities</b>																			
<b>31st Street NW - Construction Activities</b>																			
<b>Wisconsin Ave. NW - Construction</b>																			
<b>Water St. NW - Construction Activities</b>																			

Schedule shows approximate dates and is subject to change



# Project Site Locations

## 31st Street NW (east side) Restoration

Construction Period: Restoration Complete in Early - June 2022

Construction Hours: 7:00 AM – 7:00 PM (9:30 AM Sat.)

### Travel Lane Shifts

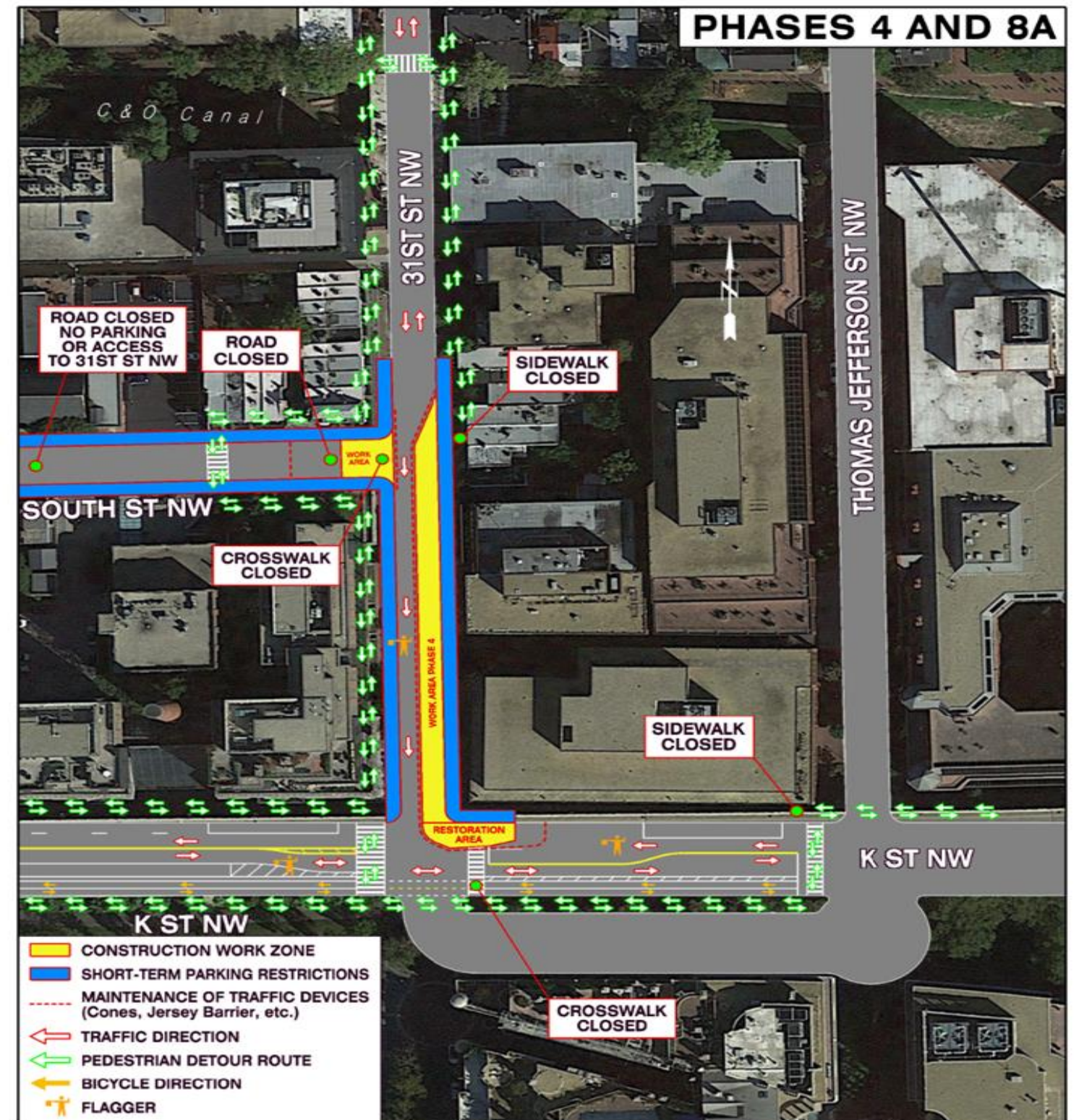
- 31<sup>st</sup> St. NW will be one way southbound between South Street NW and K Street NW.
- South St. NW will be closed at 31<sup>st</sup> ST NW. There will be no vehicular access to South ST NW from 31<sup>st</sup> ST NW. Motorists with destinations along South ST NW can enter South St. NW from Wisconsin Ave NW.
- Flaggers will be present to help navigate traffic around the construction at the corner of Wisconsin Ave. and K St. NW.

### Pedestrian Detours

- The sidewalk along 31<sup>st</sup> St. NW on the east side will be closed.
- The crosswalk at 31<sup>st</sup> St. NW and K St. NW will be closed. The crosswalk at 31<sup>st</sup> St. NW and South Street NW will be closed. See detours in image.

### Parking Restrictions

- Parking will be restricted along 31<sup>st</sup> St. NW.
- Parking along South St. NW will be restricted the entire length as illustrated.



G:\2017\11308\_002\_Sewer\_Separation\_C50\CADD\Sewer\_Separation\_31st\_M01\_Display\_P04\_Flag.dgn  
Thursday, March 13, 2022 AT 05:06 PM



# Project Site Locations

## 31st Street NW (west side) South Street Closed

Construction Period: 31<sup>st</sup> Street – June - July 2022

South Street - Mid-June 2022

Construction Hours: 7:00 AM – 7:00 PM (9:30 AM Sat.)

### Travel Lane Shifts

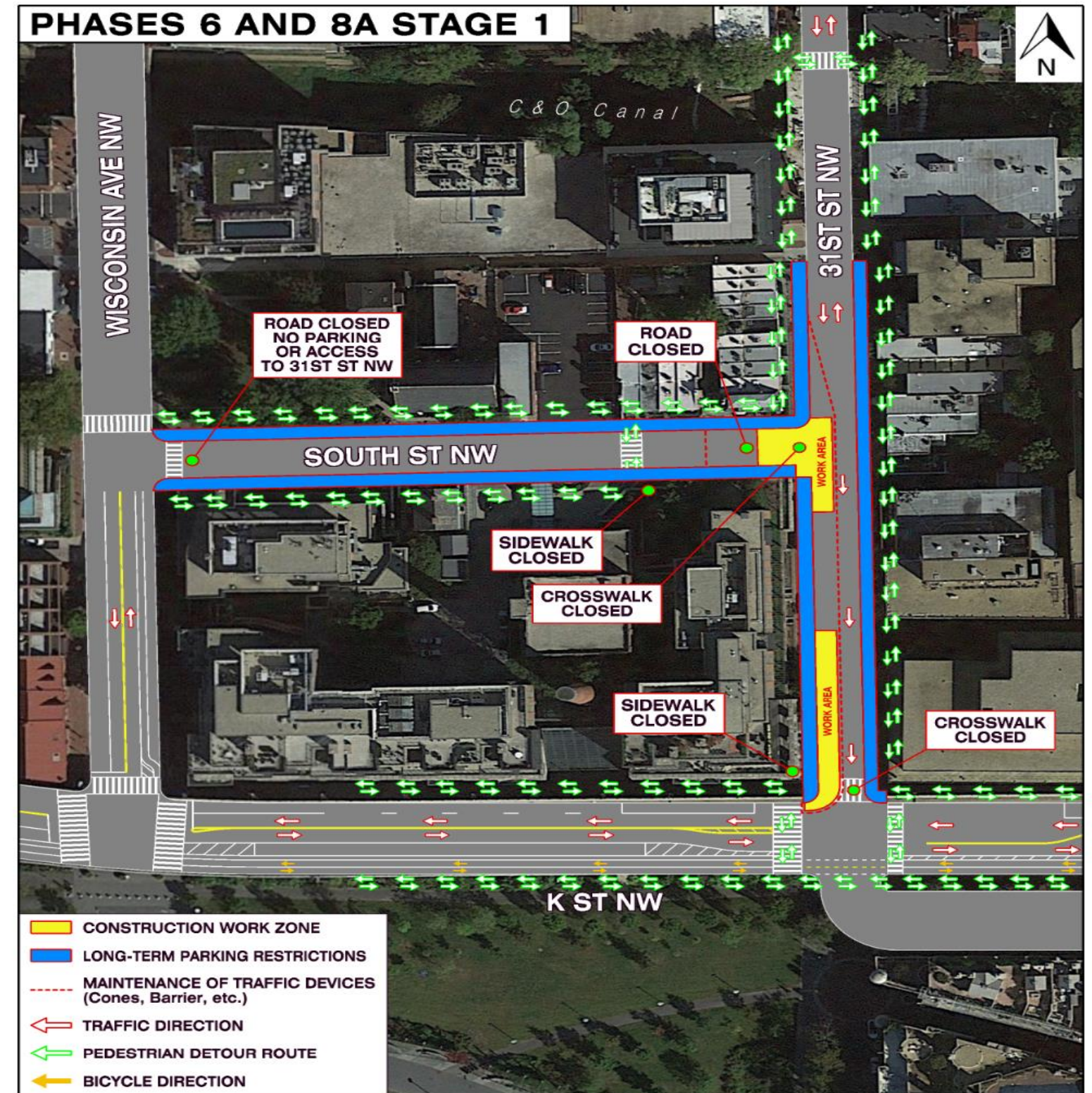
- 31<sup>st</sup> St. NW will be one way southbound between South Street NW and K Street NW.
- South St. NW will be closed at 31<sup>st</sup> St. NW. There will be no vehicular access to South St. NW from 31<sup>st</sup> St. NW. Motorists with destinations along South St. NW can enter South St. NW from Wisconsin Ave NW.

### Pedestrian Detours

- The sidewalk along 31<sup>st</sup> St. NW on the west side will be closed.
- The north crosswalk at 31<sup>st</sup> St. NW and K ST NW will be closed.
- The crosswalk at 31<sup>st</sup> St. NW and South Street NW will be closed. See detours in image.

### Parking Restrictions

- Parking will be restricted along 31<sup>st</sup> St. NW.
- Parking along South St. NW will be restricted the entire length as illustrated.



O:\2017\1713108\_07B\_2021-2022\_PRT\CADD\31st\_MOT\_Display\_6.8A\_5tagel.dgn  
Sunday, June 05, 2022 AT 01:01 PM



# Project Site Locations

## 31st Street NW (west side) South Street Closed

Construction Period: 31<sup>st</sup> Street – June - July 2022

South Street - Mid-June 2022

Construction Hours: 7:00 AM – 7:00 PM (9:30 AM Sat.)

### Travel Lane Shifts

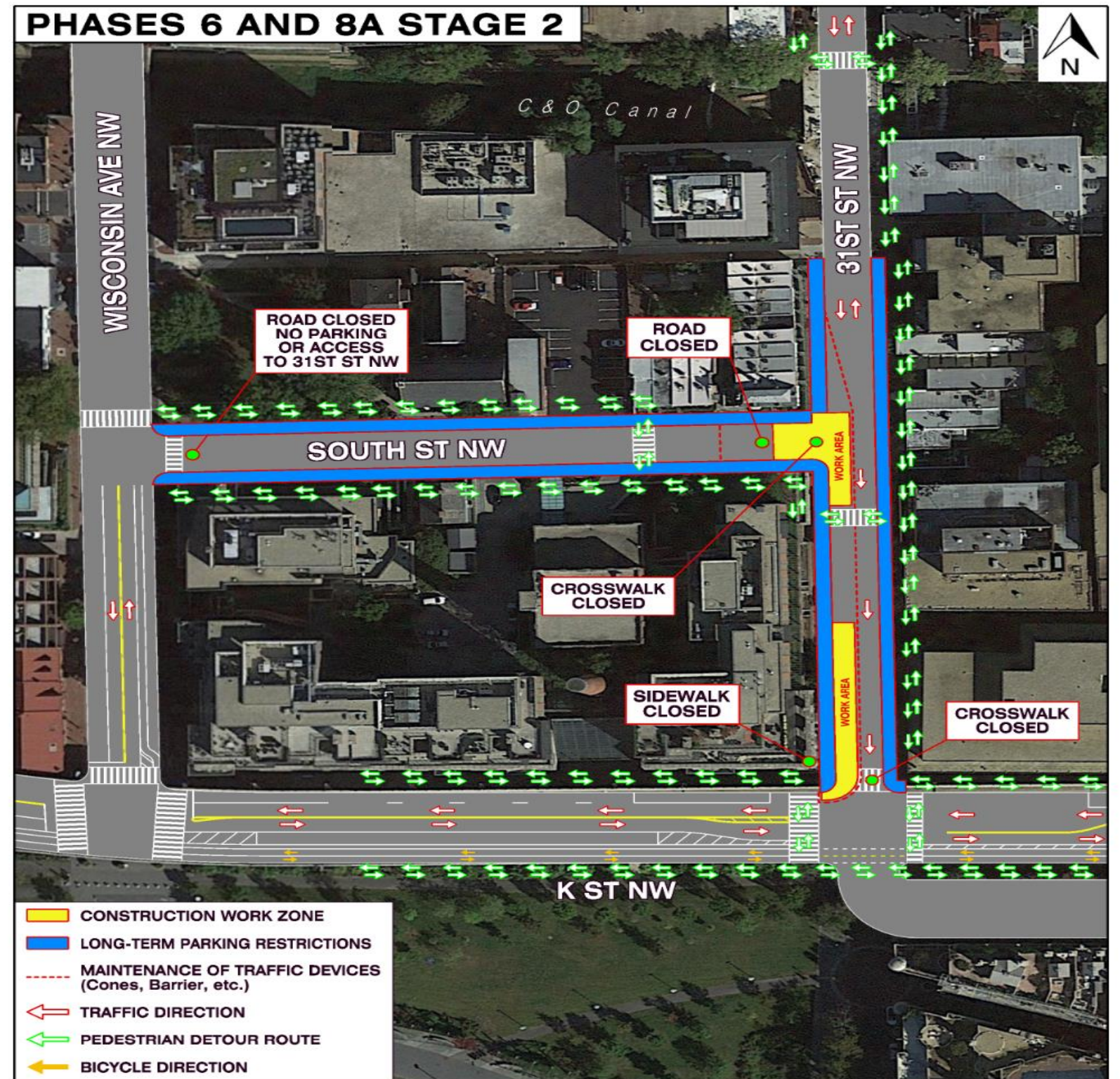
- 31<sup>st</sup> St. NW will be one way southbound between South Street NW and K Street NW.
- South St. NW will be closed at 31<sup>st</sup> St. NW. There will be no vehicular access to South St. NW from 31<sup>st</sup> St. NW. Motorists with destinations along South St. NW can enter South St. NW from Wisconsin Ave NW.

### Pedestrian Detours

- The sidewalk along 31<sup>st</sup> St. NW on the west side will be closed.
- The crosswalk at 31<sup>st</sup> St. NW and K St NW will be closed.
- The crosswalk at 31<sup>st</sup> St. NW and South Street NW will be closed. See detours in image.

### Parking Restrictions

- Parking will be restricted along 31<sup>st</sup> St. NW.
- Parking along South St. NW will be restricted the entire length as illustrated.





# Project Site Locations

## 31st Street NW (west side) South Street Open

Construction Period: 31<sup>st</sup> Street – June - July 2022

Construction Hours: 7:00 AM – 7:00 PM (9:30 AM Sat.)

### Travel Lane Shifts

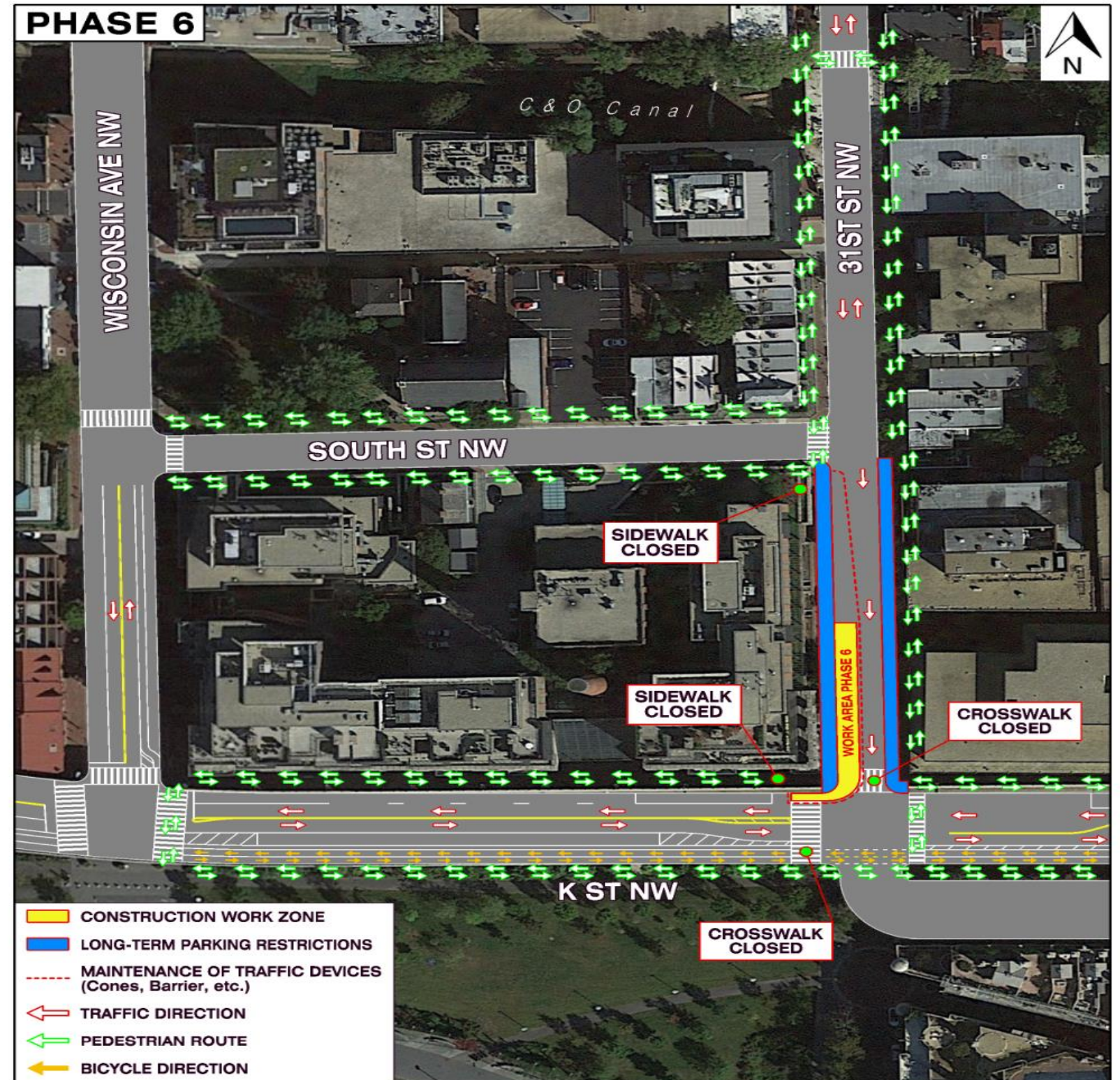
- 31<sup>st</sup> ST NW will be one way southbound between South Street NW and K Street NW.
- South ST NW will be open at 31<sup>st</sup> St. NW.

### Pedestrian Detours

- The sidewalk along 31<sup>st</sup> St. NW on the west side will be closed.
- The crosswalk at 31<sup>st</sup> St. NW and K St. NW will be closed. See detour in image.
- The crosswalk at 31<sup>st</sup> St. NW and South Street NW will be open.
- The K St. crosswalk at the west corner of 31<sup>st</sup> St. NW will be closed.

### Parking Restrictions

- Parking will be restricted along 31<sup>st</sup> St. NW.
- Parking along South St. NW will be open the entire length as illustrated.





# Project Site Locations

## Water Street NW (West of Cecil Pl to 33rd Street NW)

Maintenance of Traffic (MOT) set up for construction

Approximate Construction Period: June-Sept. 2022

Construction Hours: 7:00 AM – 7:00 PM

### Travel Lane Shifts

- During configuration of maintenance of traffic (MOT) all traffic lanes will remain open.

### Pedestrian Detours

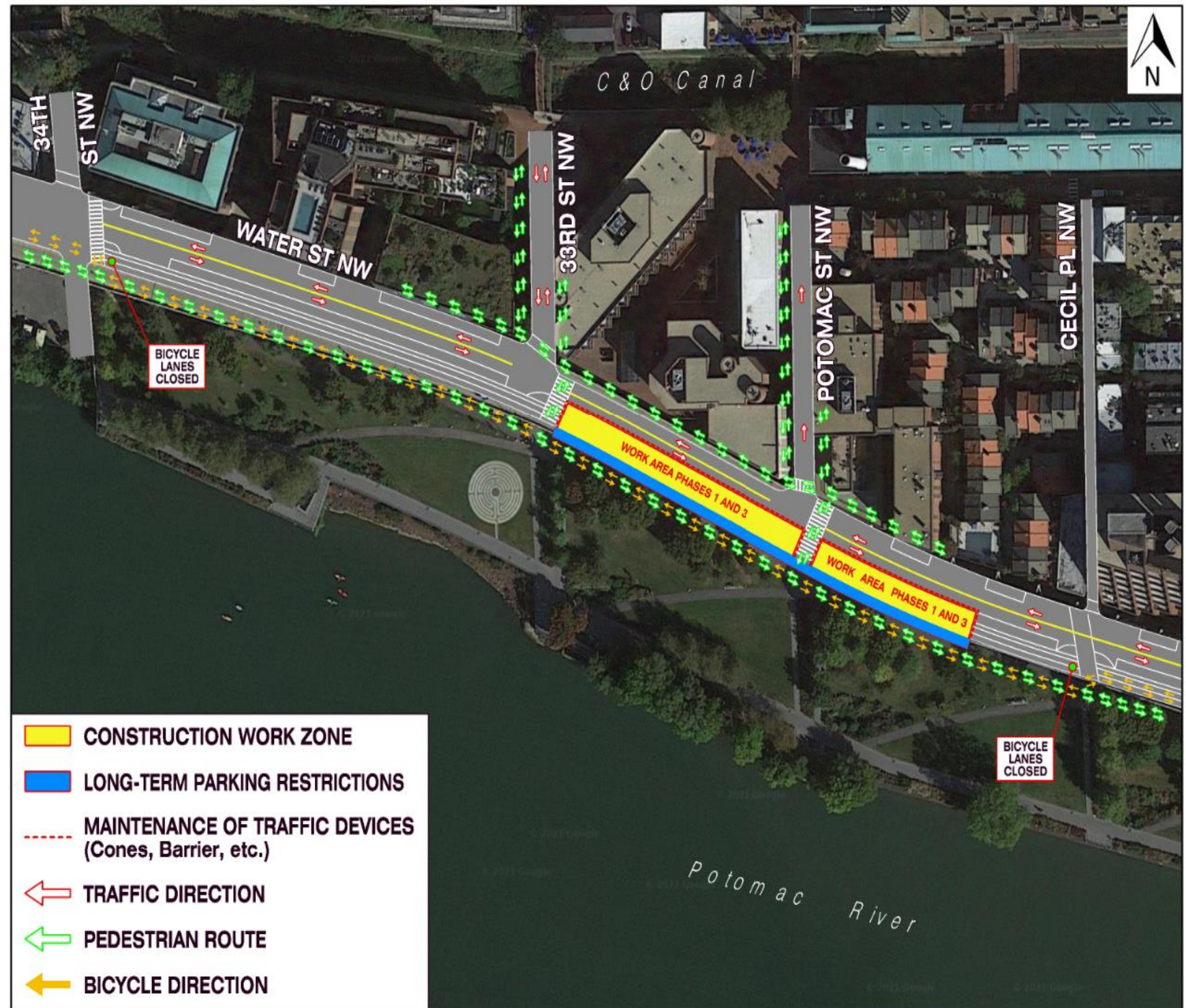
- All sidewalks will be open.

### Parking Restrictions

- Parking will be restricted along the south side of Water ST NW as illustrated.

### Bicycle Lane Detours

- On Water ST NW between 34<sup>th</sup> ST NW and Cecil PL NW, the existing bicycle lanes will be detoured to Georgetown Waterfront Park.



G:\2017\1713108.078\_2021-2022.PRT\CA00\Kst.MOT.Display\_PH-3.dgn  
Wednesday, April 27, 2022 AT 05:21 PM



# Project Site Locations

## Water Street NW (West of Potomac Street NW)

Approximate Construction Period: June-Sept. 2022

Construction Hours: 9:30 AM – 3:30 PM

### Travel Lane Shifts

- Travel lanes on Water St. NW between Potomac ST NW and 33<sup>rd</sup> St. NW will be directed with flaggers through a two-way, one-lane configuration during the day.
- From 3:30 PM- 9:30 AM traffic will flow in the normal two-lane, two-way configuration.

### Pedestrian Detours

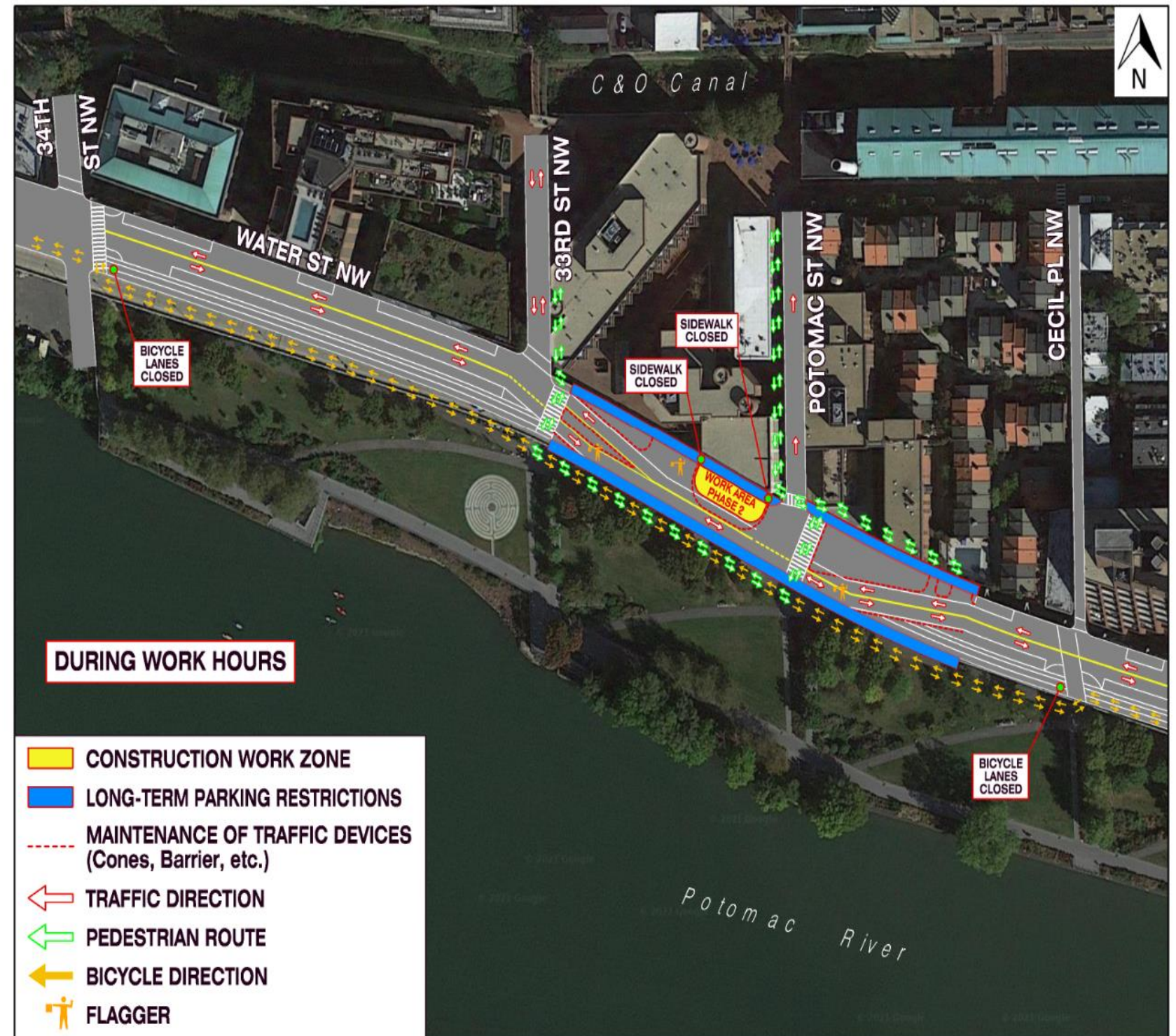
- The sidewalk along Water St. NW on the north side between Potomac St. NW and 33<sup>rd</sup> St. NW will be closed.

### Parking Restrictions

- Parking will be restricted along Water St. NW.

### Bicycle Lane Detours

- On Water St. NW between 34<sup>th</sup> St. NW and Cecil PL NW, the existing bicycle lanes will be detoured to Georgetown Waterfront Park through the duration of construction.



0:\2017\713108\_078\_2021-2022.PRT\CAD\Kst.M07.Display.PH2.During.Hours.dgn  
Wednesday, April 27, 2022 AT 03:32 PM



# Project Site Locations

## Wisconsin Avenue NW

Wisconsin Avenue Construction will have 7 phases.  
Approximate Construction Period: June-Sept. 2022

### Travel Lane Shifts

- During construction hours (7:00 AM- 7:00 PM), K Street NW and Wisconsin Avenue NW will continue to operate two-way traffic.

### Pedestrian Detours

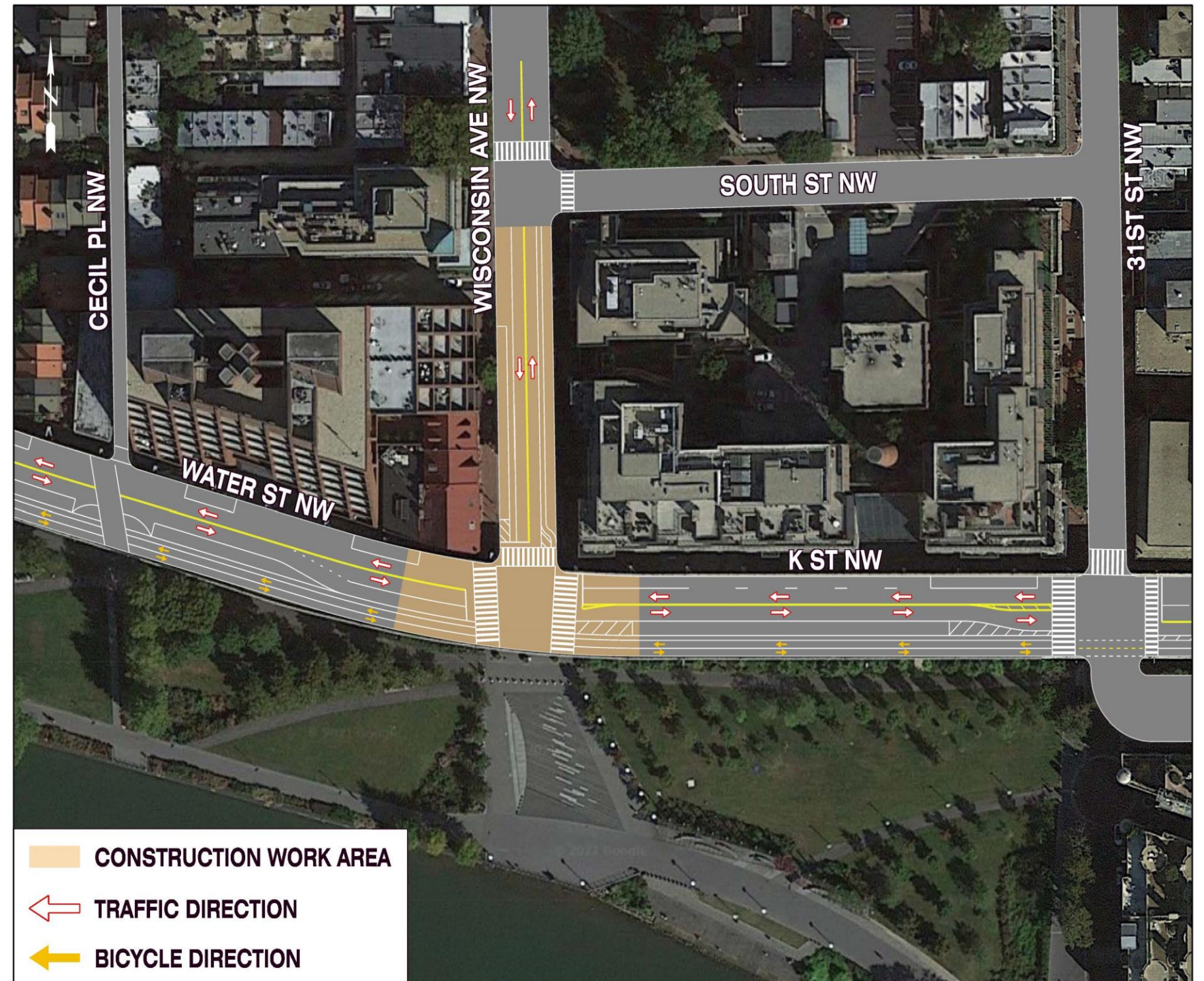
- Sidewalks will be open along Wisconsin Ave. on both sides during most phases.

### Parking Restrictions

- Parking will be restricted along Wisconsin Ave, and K Street during certain phases.

### Bicycle Lane Detours

- The eastbound bicycle lane will be detoured to Georgetown Waterfront Park pathway



G:\2017\1713108\_002\_Sewer\_Separation\_CS0\CADD\Sewer\_Separation\_Wisconsin\_M01\_Display\_PH2.dgn  
Monday, August 23, 2021 AT 11:55 AM



# Project Site Locations

## Wisconsin Avenue NW Phase 1 Stage 1

Construction Period: June 2022

Construction Hours: 9:30 AM – 3:30 PM

7:30 PM – 6:30 AM

### Travel Lane Shifts

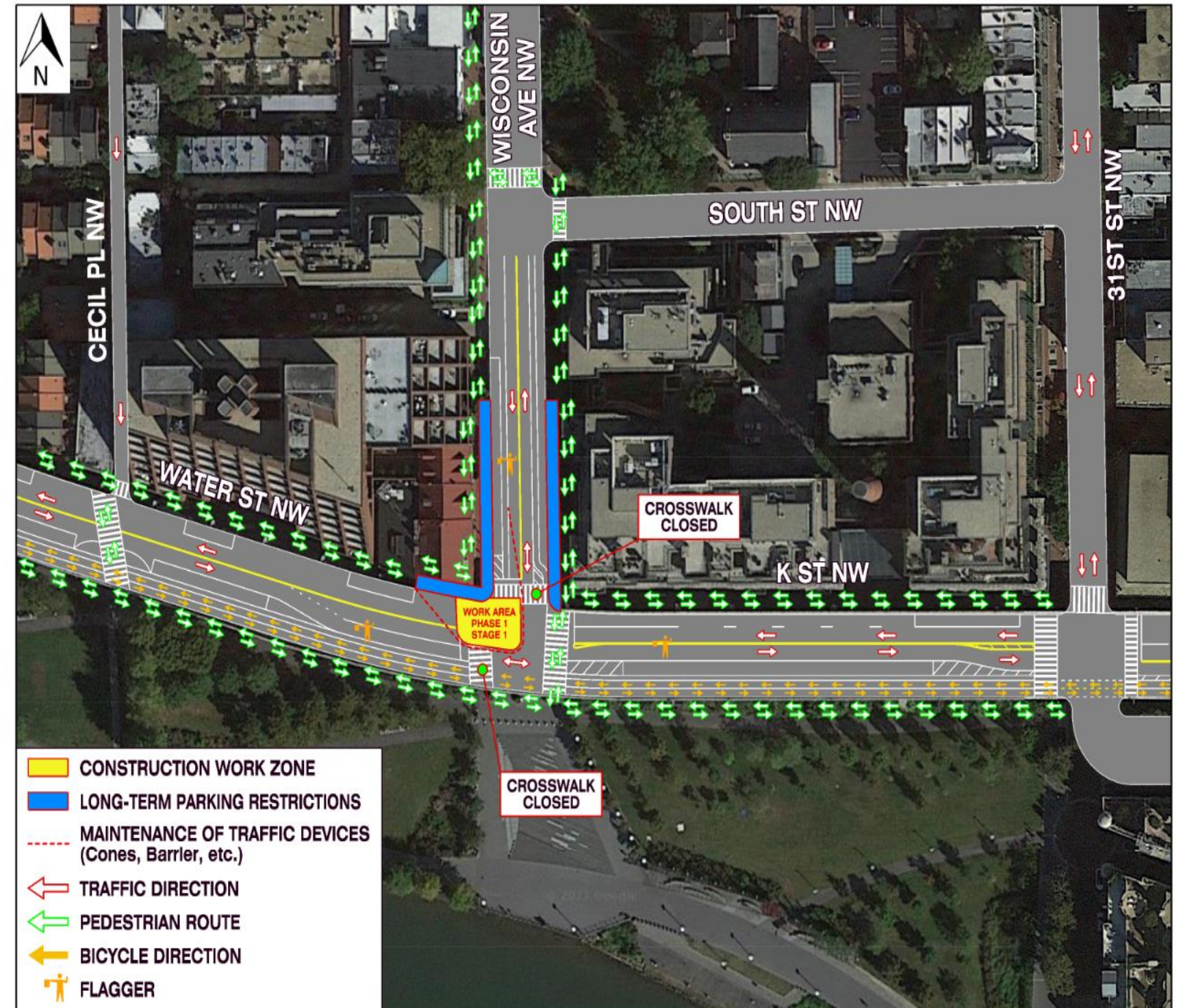
- Flaggers will be present on Wisconsin Ave. NW to help navigate traffic around construction at the west and center portion of the Wisconsin Ave. and K St. NW intersection.
- Flaggers will be present on K St. NW to help navigate traffic around construction at the west corner and center of the Wisconsin Ave. and K St. NW intersection.

### Pedestrian Detours

- The crosswalk at the west side of Wisconsin and K St. will be closed.

### Parking Restrictions

- Parking will be restricted along Wisconsin Ave. NW.
- Parking will be closed at the corner of Wisconsin Ave. and K St. NW.





# Project Site Locations

## Wisconsin Avenue NW Phase 1 Stage 2

Construction Period: June 2022

Construction Hours: 9:30 AM – 3:30 PM  
7:30 PM – 6:30 AM

### Travel Lane Shifts

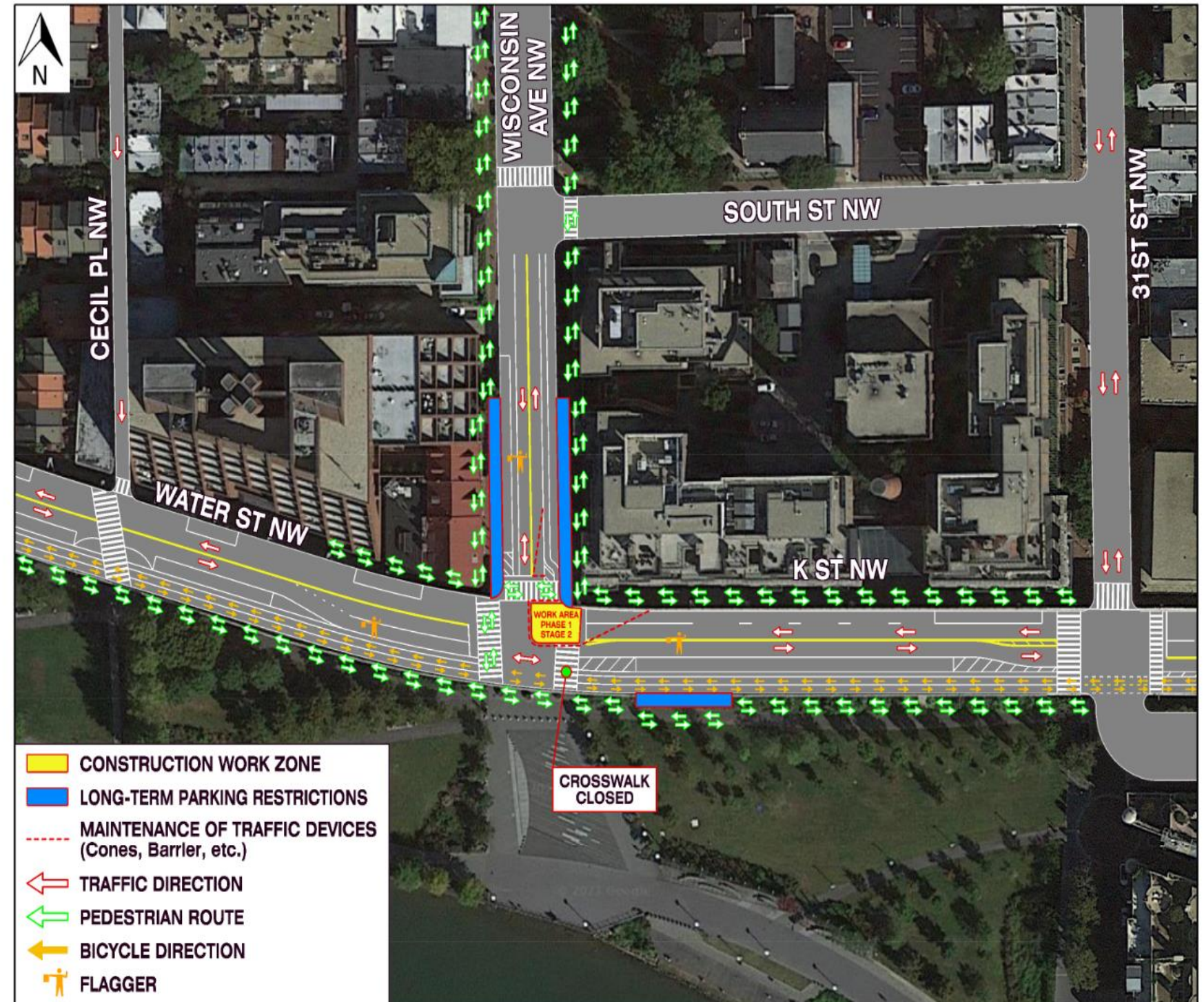
- Flaggers will be present on Wisconsin Ave. NW to help navigate traffic around construction at the east corner of Wisconsin Ave. and K St. NW.
- Flaggers will be present on K St. NW to help navigate traffic around the construction at the east corner of Wisconsin Ave. and K St. NW.

### Pedestrian Detours

- The crosswalk at the east side of Wisconsin and K St. will be closed.

### Parking Restrictions

- Parking will be restricted along Wisconsin Ave. NW.
- Parking will be closed at the corner of Wisconsin Ave. and K St. NW.



0:\2017\1713108\_07B\_2021-2022\_PRT\CA00\Wisconsin\_WaterMain\_Display\_Ph1\_ST2.dgn  
Thursday, April 28, 2022 AT 08:03 AM



# Project Site Locations

## Wisconsin Avenue NW Phase 2

Construction Period: June – July 2022

Construction Hours: 7:00 AM – 7:00 PM

### Travel Lane Shifts

- Traffic will move in one lane in each direction along Wisconsin Ave. NW.
- Traffic will move in one lanes in each direction along K St. NW.

### Pedestrian Detours

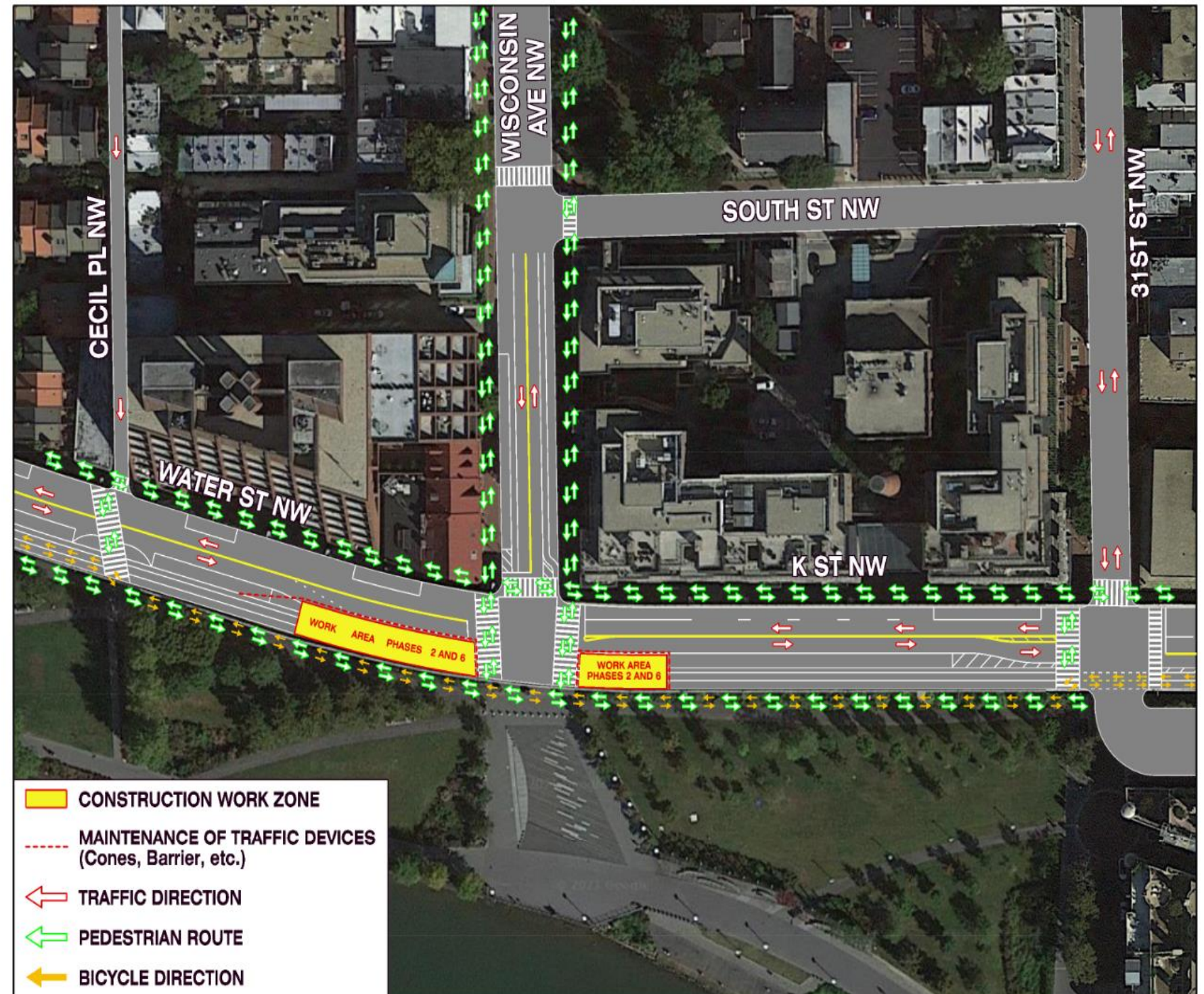
- All crosswalks at Wisconsin Ave. and K St. NW will be open.
- Temporary flagging operations may be required.

### Parking Restrictions

- Parking may be restricted on the south side of K Street NW and Water Street NW.

### Bicycle Lane Detours

- On K St. NW the existing bicycle lanes along the south side of K St. NW will be detoured to Georgetown Waterfront Park.





# Project Site Locations

## Wisconsin Avenue NW Phase 3

Construction Period: June 2022

Construction Hours: 7:00 AM – 7:00 PM

### Travel Lane Shifts

- Traffic will move in two lanes in both directions along Wisconsin Ave. NW.
- Traffic will move in two lanes in both directions around construction on K St. NW.

### Pedestrian Detours

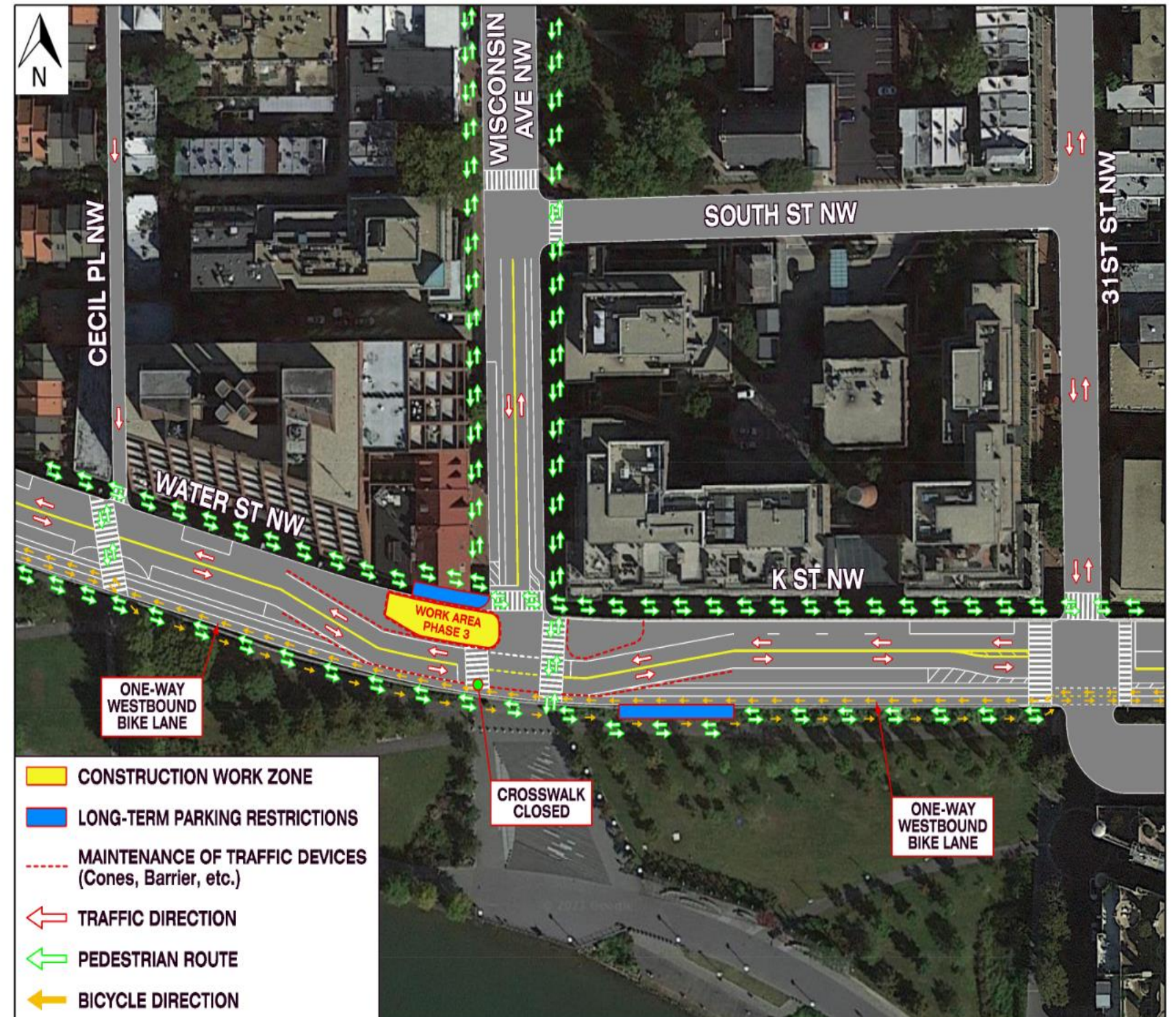
- The crosswalk at the west side of Wisconsin Ave. and K St. will be closed.

### Parking Restrictions

- Parking will be restricted near the corners of K St. at Wisconsin Ave. NW.

### Bicycle Lane Detours

- The existing bicycle lane along K St. NW will be reduced to one lane heading westbound.
- The existing bicycle lane along K St. NW heading east will be detoured to Georgetown Waterfront Park.



0:\2017\713108\_07B\_2021-2022\_PRT\CADD\Wisconsin\_WaterMain\_Display\_Pkg.dgn  
Wednesday, April 27, 2022 AT 02:28 PM



# Project Site Locations

## Wisconsin Avenue NW Phase 4

Construction Period: June 2022

Construction Hours: 7:00 AM – 7:00 PM

### Travel Lane Shifts

- Traffic will move in two lanes in both directions along Wisconsin Ave. NW.
- Traffic will move in two lanes in both directions around construction on K St. NW.

### Pedestrian Detours

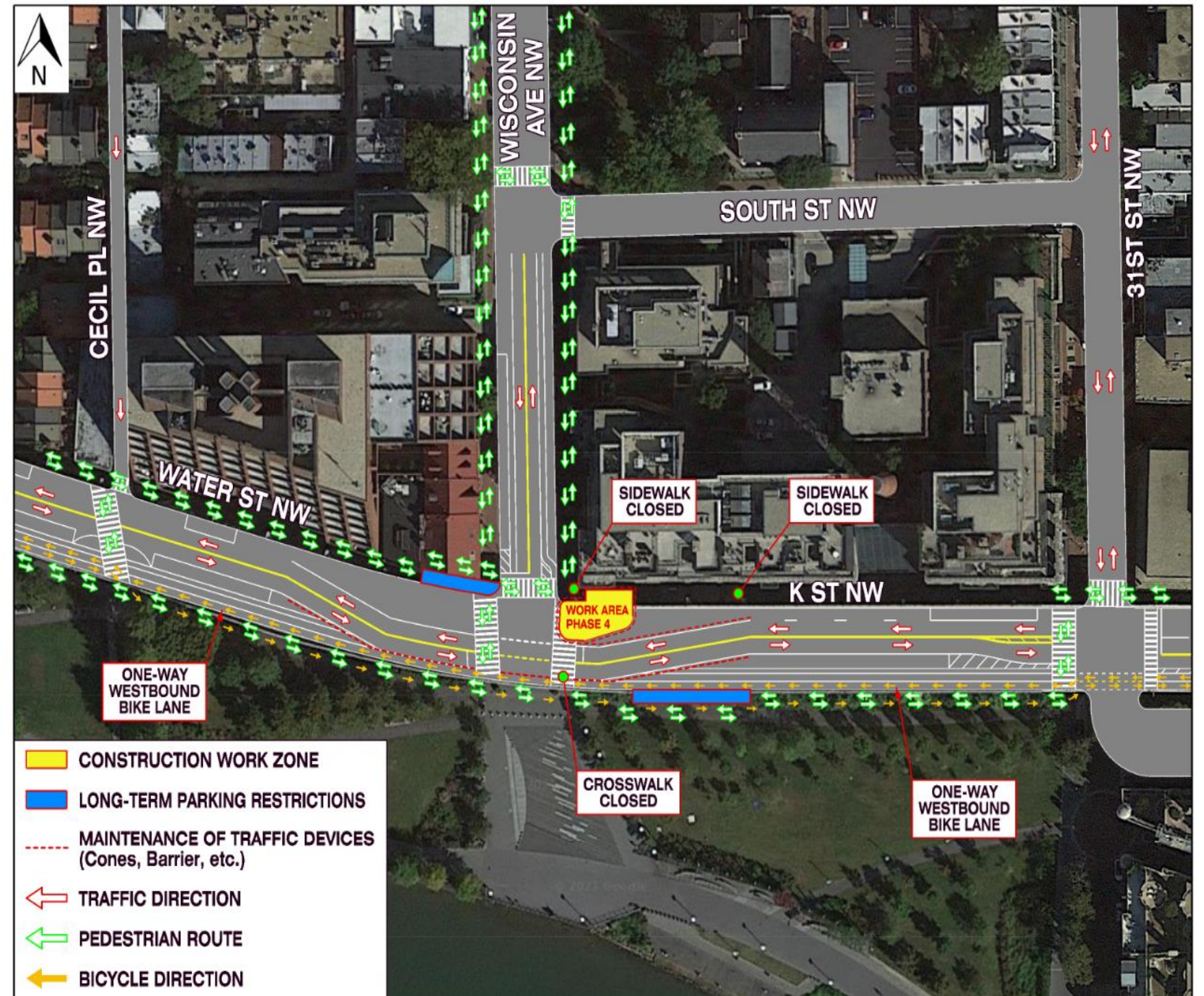
- The crosswalk at the east side of Wisconsin Ave. and K St. will be closed.

### Parking Restrictions

- Parking will be restricted near the corners of K St. at Wisconsin Ave. NW.

### Bicycle Lane Detours

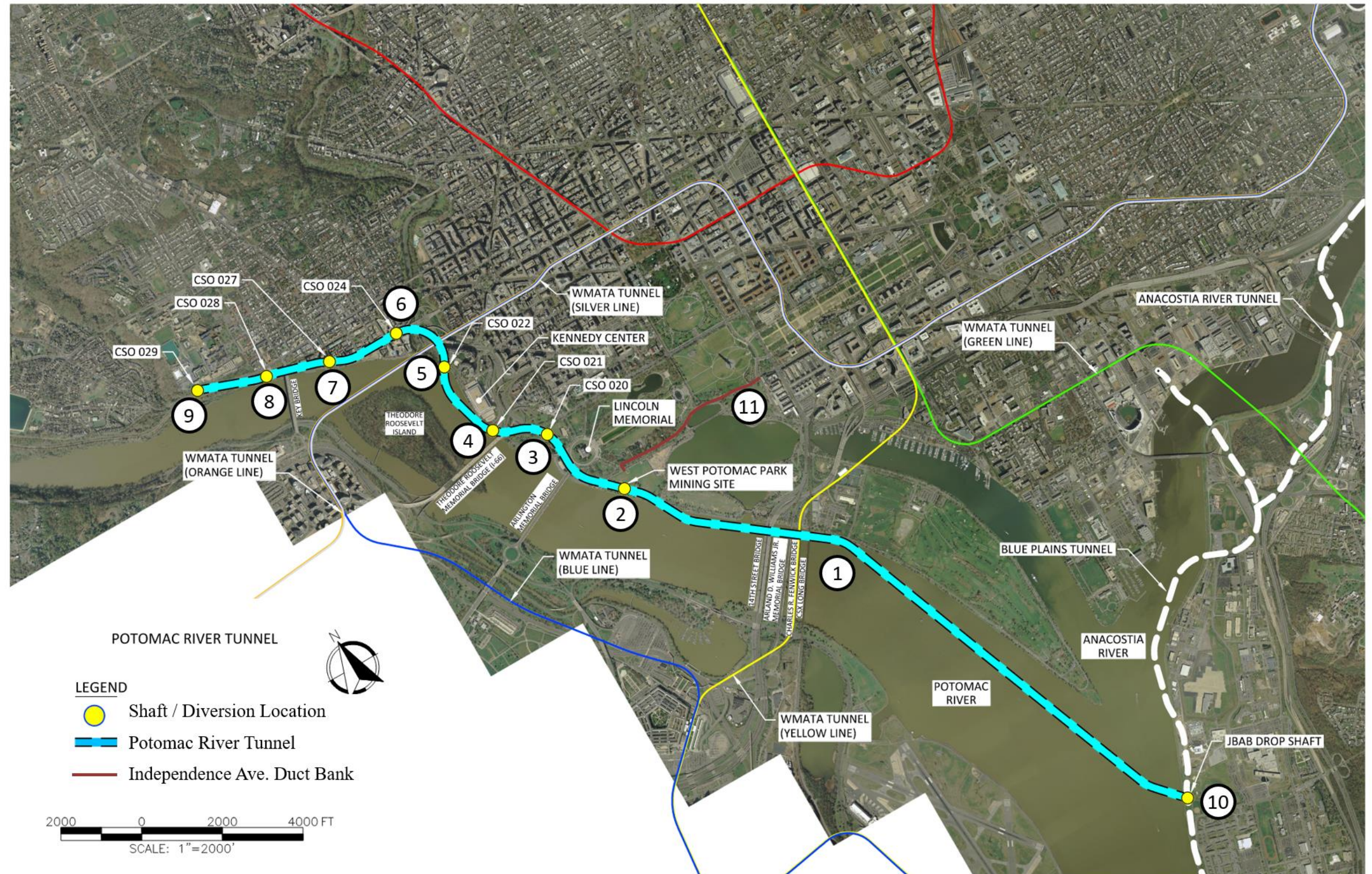
- The existing bicycle lane along K St. NW will be reduced to one lane heading westbound.
- The existing bicycle lane along K St. NW heading east will be detoured to Georgetown Waterfront Park.





# Potomac River Tunnel Project Site Locations

Components	
1	Tunnel Corridor
2	West Potomac Park Mining Site
3	CSO 020 Control
4	CSO 021 Control
5	CSO 022 Control
6	CSO 024 Control
7	CSO 027 Control
8	CSO 028 Control
9	CSO 029 Control
10	Tunnel Connection to JBAB
11	Independence Ave SW Underground Electric Duct Bank





# Questions and Answers

---

We will acknowledge questions from participants who are online and on phone.

- **ONLINE PARTICIPANTS:** send your questions to the Host by using the Chat mode. You may also click on “Participants” to raise your hand for a question.
- **PHONE PARTICIPANTS:** press \*9 to alert us that you want to ask a question. We will unmute you when it’s your turn to ask a question.



# Next Steps

---

- Continue to provide construction updates and notifications to Councilmember's Office, ANC, Businesses, and Community
- Continue presentations at ANC meetings and hosting community meetings

## CONTACT INFORMATION

### **CSO 025/026 Sewer Separation**

- 24/7 Project Hotline: 301-772-7358
- Project Email: [dccleanriverssewersep@dcwater.com](mailto:dccleanriverssewersep@dcwater.com)
- Project Website: [www.dewater.com/sewersep](http://www.dewater.com/sewersep)

### **Potomac River Tunnel Advanced Utility Construction**

- 24/7 Project Hotline: 202-448-9040
- Project Email: [dcpotomacrivertunnel@dcwater.com](mailto:dcpotomacrivertunnel@dcwater.com)
- Project Website: [www.dewater.com/prt](http://www.dewater.com/prt)