

The water service pipe connects the water main to your household plumbing.

The water service pipe most commonly enters through the basement. Homes without basements the service pipe enters through the first floor.

Types of water pipes

Follow the guidance below or contact a licensed plumber to determine the material of your water pipes. To identify the material of your service pipe material on private property, check your household water service connection, typically located in the basement.

Homeowners should identify and replace old household pipes, particularly galvanized plumbing and sources of lead. The type of household plumbing can vary throughout your household.

Lead



A dull, silver-gray color that is easily scratched with a coin. Use a magnet - strong magnets will *not* cling to lead pipes.

Galvanized



A dull, silver-gray color. Use a magnet - strong magnets *will* typically cling to galvanized pipes.

Copper



The color of a copper penny.

Plastic

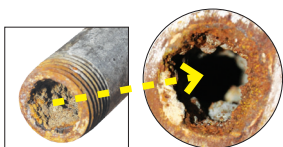


White, rigid pipe.

Brass



Dark reddish brown to a light silvery yellow color. Older pipes may be corroded and may contain lead.



Galvanized Plumbing & Impacts on Water Quality Galvanized pipes are old, iron pipes that were installed in many homes built before the 1960s. Over many years, old, corrosion scales build up inside the walls of galvanized pipes.

These pipes can cause discolored water and pressure issues. Galvanized pipes can also release lead in water if you have, or ever had, a lead service pipe. When lead is released from a lead service pipe and passes through galvanized plumbing (particularly over decades of use), lead can accumulate on the inside, corroded walls of this plumbing. Lead release from galvanized pipes can vary from home to home and can continue to occur even after a lead service pipe is replaced.