

*Clean Rivers Project
Northeast Boundary Tunnel*

Tunnel Forum Meeting

WELCOME NEIGHBORS!

May 15, 2019

United Planning Organization – 301 Rhode Island Ave., NW

Agenda

- **Welcome**
 - **Gerard Brown, DC Health, Rodent Control**
 - **Lesley Devrouax, North Capitol Main Street**
 - **Responses to April 11th Tunnel Forum Concerns**
 - **Bryant Street Alternative Parking Area**
 - **Construction Sites Schedules**
 - **First Street NW Pumping Station**
 - **Florida Avenue NW**
 - **R Street NW**
 - **Tree Replanting Plan**
 - **Questions**
- Note: Return your comment sheets to the front desk.**

NORTH NCAPITOL MAIN STREET

Chartered by the National Trust for Historic Preservation Main Street program and the DC Department of Small and Local Business

Development, **North Capitol Main Street, Inc.'s mission is to revitalize North Capitol Street as a vibrant commercial corridor leading from the United States Capitol building to all points north.**

To fulfill its mission, North Capitol Main Street provides:

Technical and Other Support:

- **Marketing**
- **Promotions**
- **Accounting**
- **Inventory Assessment**
- **Web Development**
- **Social Media Campaigns**
- **Storefront Presence**
- **Signage**

**NORTH
NCAPITOL
MAIN STREET**



Office Location:

1410 North Capitol Street, NW, Washington, D.C. 20001

Mailing Address:

P.O. Box 29068, Washington, D.C. 20002

202.298.0698 | info@northcapitoldc.com

www.northcapitoldc.com



**3rd Annual
“Taste of North Capitol”**

Thursday, June 6, 2019

\$30.00

**Sip and Taste Some the Best
North Capitol Street has to
Offer!**

events@northcapitoldc.com

JOIN US FOR OUR ANNUAL BUSINESS SHOWCASE...



Taste of
**NORTH
CAPITOL**
MAIN STREET

**Thursday
JUNE 6, 2019
7pm-10pm**
NPR ATRIUM
1111 North Capitol St NE, WDC 20001

Live Music by **The Archives**
featuring **Puma Ptah of Thievery Corporation**

food · live music · specialty cocktails

tasteofnorthcap2019.eventbrite.com
Tickets start at \$30 (\$55 at the door)

  **NAMS** www.northcapitoldc.com




Responses to April 11th Tunnel Forum Concerns

CONCERN	RESPONSE
Empty lot corner of R St and FLA available for lease as APA? Is Liquor store at corner of 3rd/FLA available for after hours resident parking?	We are following up on the lot at RST/FLA . The liquor store lot is small and not available for our use.
Why isn't the federal government paying for the DC Clean Rivers Project?	DC Water aggressively seeks federal appropriations to help cover the cost of upgrading the combined sewer system. Learn more here: https://www.dewater.com/whats-going-on/blog/clean-rivers-and-impervious-cover
Can we talk to or work out a deal for businesses being served by private trash companies?	North Capitol Main Street will work with businesses to inform private trash companies.
Businesses with outdoor patios get busy between 4-5pm during happy hour. Request was made to wrap up construction activity prior to this time.	The project work hours are between 7 am and 7 pm, Monday through Friday.
Residents suggested "driver feedback signs" on pole as opposed to speed trailers to preserve street parking. Residents also suggested speed cameras on FLA.	Driver feedback signs are an alternative to speed trailers. We are working with DDOT to determine if a temporary speed camera installation is feasible.
Concerns about the safety of narrowing the sidewalk on FLA.	We are considering installing a temporary crosswalk during certain stages at Florida Avenue and 3rd Street as well providing delineator posts in the area where the sidewalk narrows.
Will bus routes be modified?	Neither WMATA nor Howard university shuttle routes are anticipated to be modified.
Residents expressed need for left turn signal from Florida to Rhode Island Ave.	We have discussed with DDOT and this will not be feasible.
Temporary paved surfaces after sidewalk removal need to be built to minimize noise and vibration.	We understand your concerns. We will ensure that temporary paved surfaces will be built to minimize noise and vibration.

Bryant Street Alternative Parking Area

2nd & Bryant Streets, NW



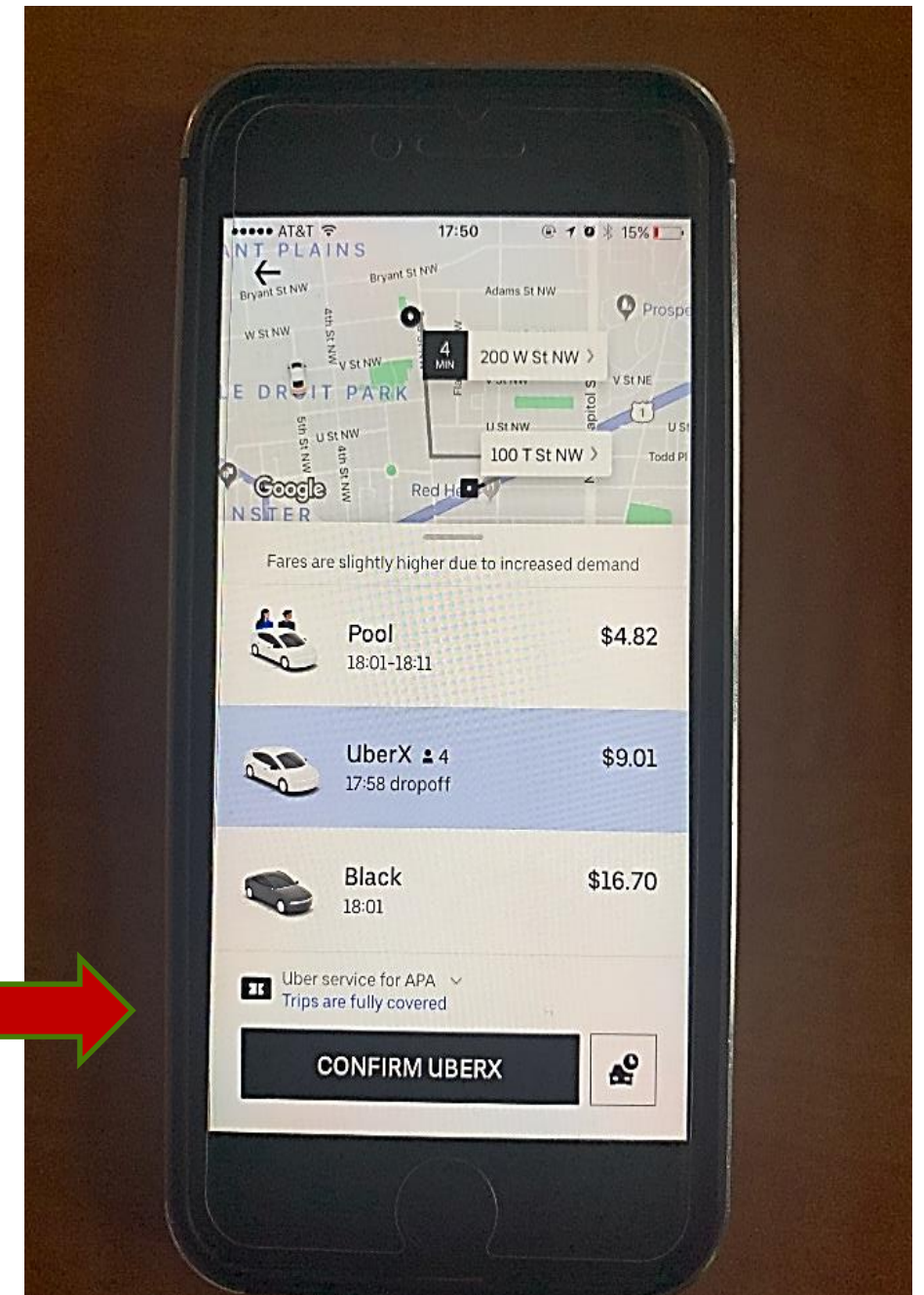
-  Area eligible for APA
-  Bryant St. APA
-  Construction Site

Bryant Street Alternative Parking Area

2nd & Bryant Streets, NW

How to Use the Uber Service for the Bryant Street APA

- Register with Bryant Street APA.
- You must have a smartphone with the Uber App installed.
- Check your email for a link. Click on the link, and the Uber App will be opened.
- Follow the instructions to download Uber Vouchers.
- When you are ready to ride, open the Uber App.
- Type in your destination.
- If you are within the geographically designated area, you will see a screen like this



Construction Site Updates

Shane Yanagisawa, Project Director; Matt Wolniak, Traffic Engineer



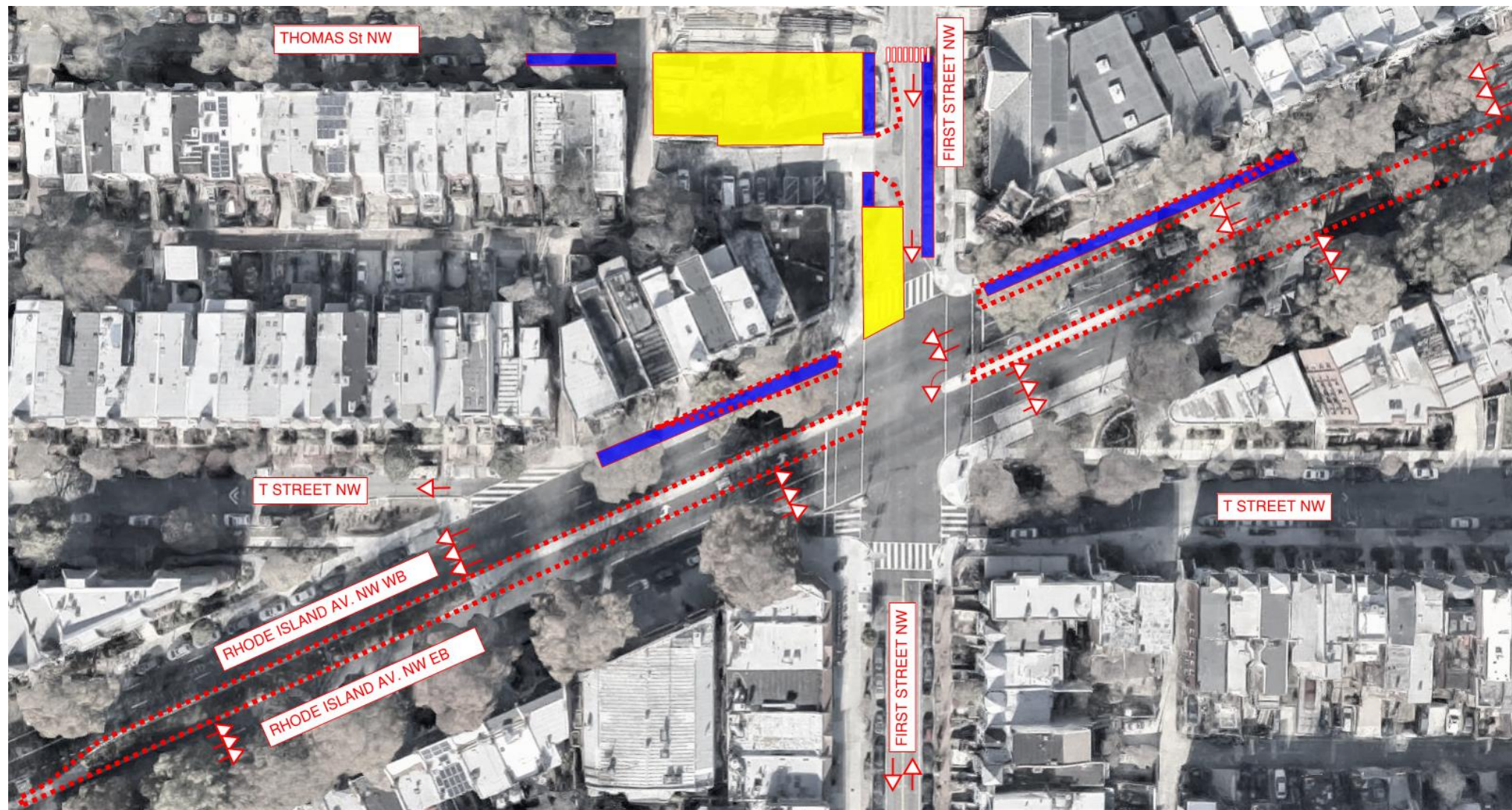
First Street NW Pumping Station Construction Site

Jet Grout Mobilization, May 2019 – June 2019

All construction dates are approximate and could change.

PUMP STATION / FIRST STREET	
MOT PHASE:	Phase 2 – Run Utilities for Jet Grouting
DURATION:	Approximately 3 weeks
MAIN IMPACT:	Restriction Northbound traffic on 1 st Street and traffic detour; One lane reduction on Rhode Island Avenue Westbound

- WORK ZONE (CSA, Median Removal)
 - PARKING RESTRICTION
 - MOT DEVICES (Cones, Jersey Barrier, etc..)
- MOT = Maintenance of Traffic



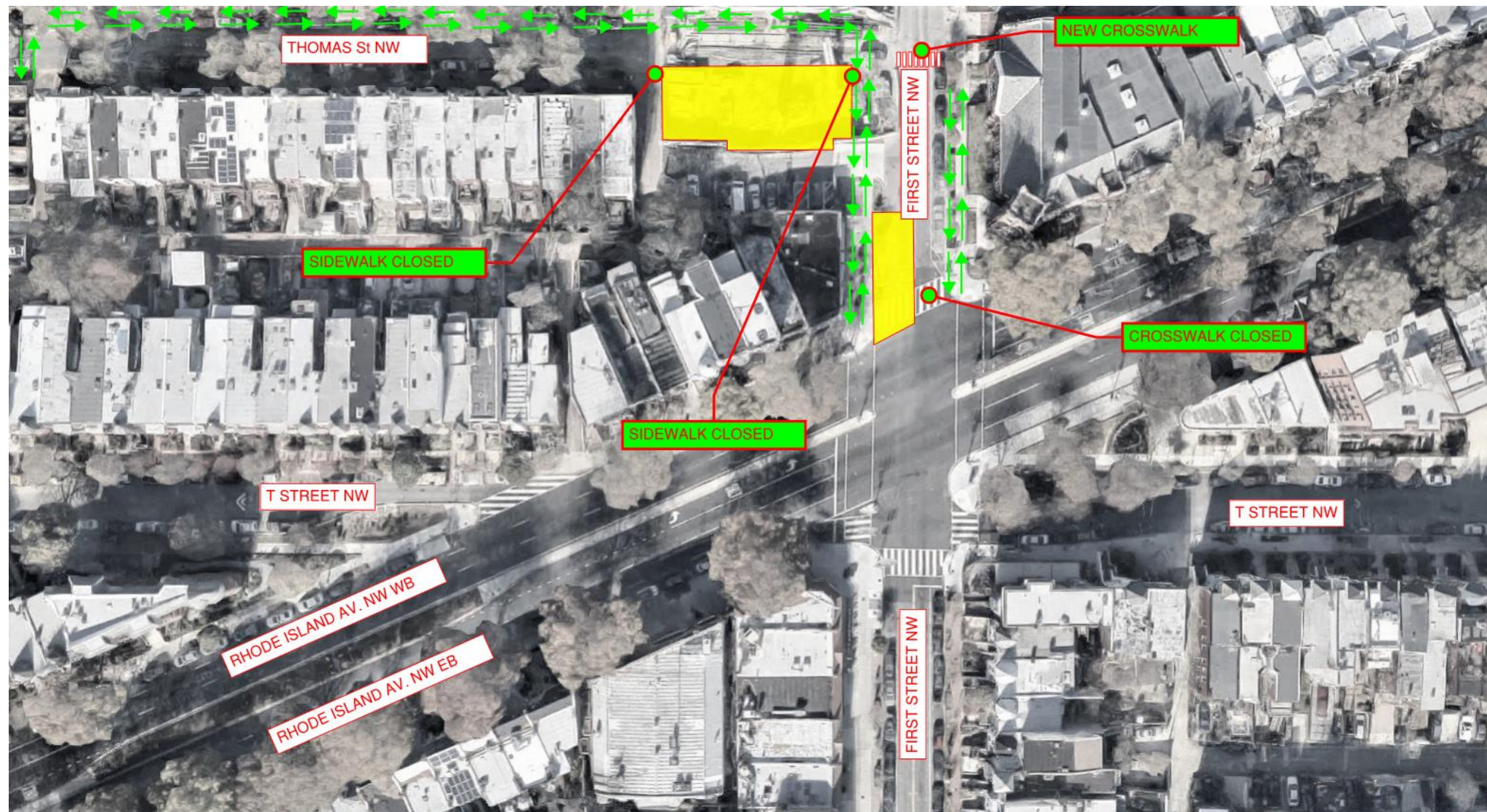
First Street NW Pumping Station Construction Site

Pedestrian Detour, May 2019 – June 2019

All construction dates are approximate and could change.

PUMP STATION / FIRST STREET – Pedestrian Detour	
MOT PHASE:	Phase 2 – Run Utilities for Jet Grouting
DURATION:	Approximately 3 weeks
MAIN IMPACT:	Crosswalk on First Street closed.

- WORK ZONE (CSA, Median Removal)
- PARKING RESTRICTION
- MOT DEVICES (Cones, Jersey Barrier, etc..)
- MOT = Maintenance of Traffic



First Street NW Pumping Station Construction Site

Jet Grouting, June 2019 – February 2020

All construction dates are approximate and could change.

PUMP STATION / FIRST STREET	
MOT PHASE:	Phase 3 – Jet Grouting
DURATION:	Approximately 36 weeks
MAIN IMPACT:	Reduce one lane in both directions along Rhode Island Ave. NW. Northbound traffic along First Street restricted. Traffic detour.

- WORK ZONE (CSA, Median Removal)
 - PARKING RESTRICTION
 - MOT DEVICES (Cones, Jersey Barrier, etc..)
- MOT = Maintenance of Traffic



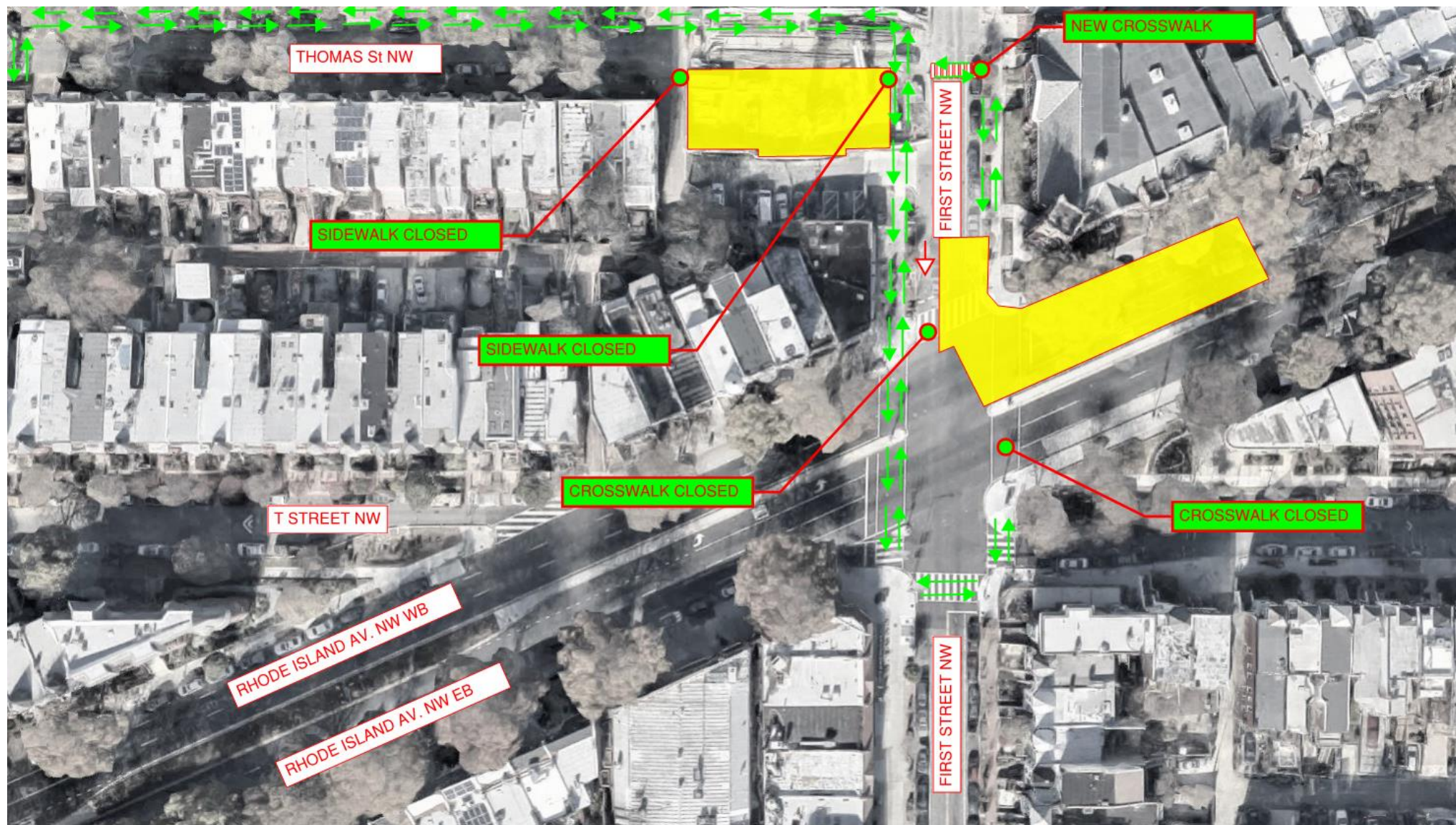
First Street NW Pumping Station Construction Site

Pedestrian Detour, June 2019 – February 2020

All construction dates are approximate and could change.

PUMP STATION / FIRST STREET – Pedestrian Detour	
MOT PHASE:	Phase 3 – Jet Grouting
DURATION:	Approximately 36 weeks
MAIN IMPACT:	One crosswalk closed on First Street and one crosswalk closed on Rhode Island Avenue.

- WORK ZONE (CSA, Median Removal)
- PARKING RESTRICTION
- MOT DEVICES (Cones, Jersey Barrier, etc..)
- MOT = Maintenance of Traffic



First Street NW Pumping Station Construction Site

Jet Grouting, Date To Be Determined

All construction dates are approximate and could change.

PUMP STATION / FIRST STREET	
MOT PHASE:	Phase 4 – Jet Grouting
DURATION:	Approximately 2 weeks
MAIN IMPACT:	Reducing lanes in both directions along Rhode Island Ave. NW. Northbound traffic along First Street restricted. Sidewalk between First Street and Rhode Island Av. occupied to allow Jet grouting activities. Traffic detour.

- WORK ZONE (CSA, Median Removal)
- PARKING RESTRICTION
- MOT DEVICES (Cones, Jersey Barrier, etc..)
- MOT = Maintenance of Traffic



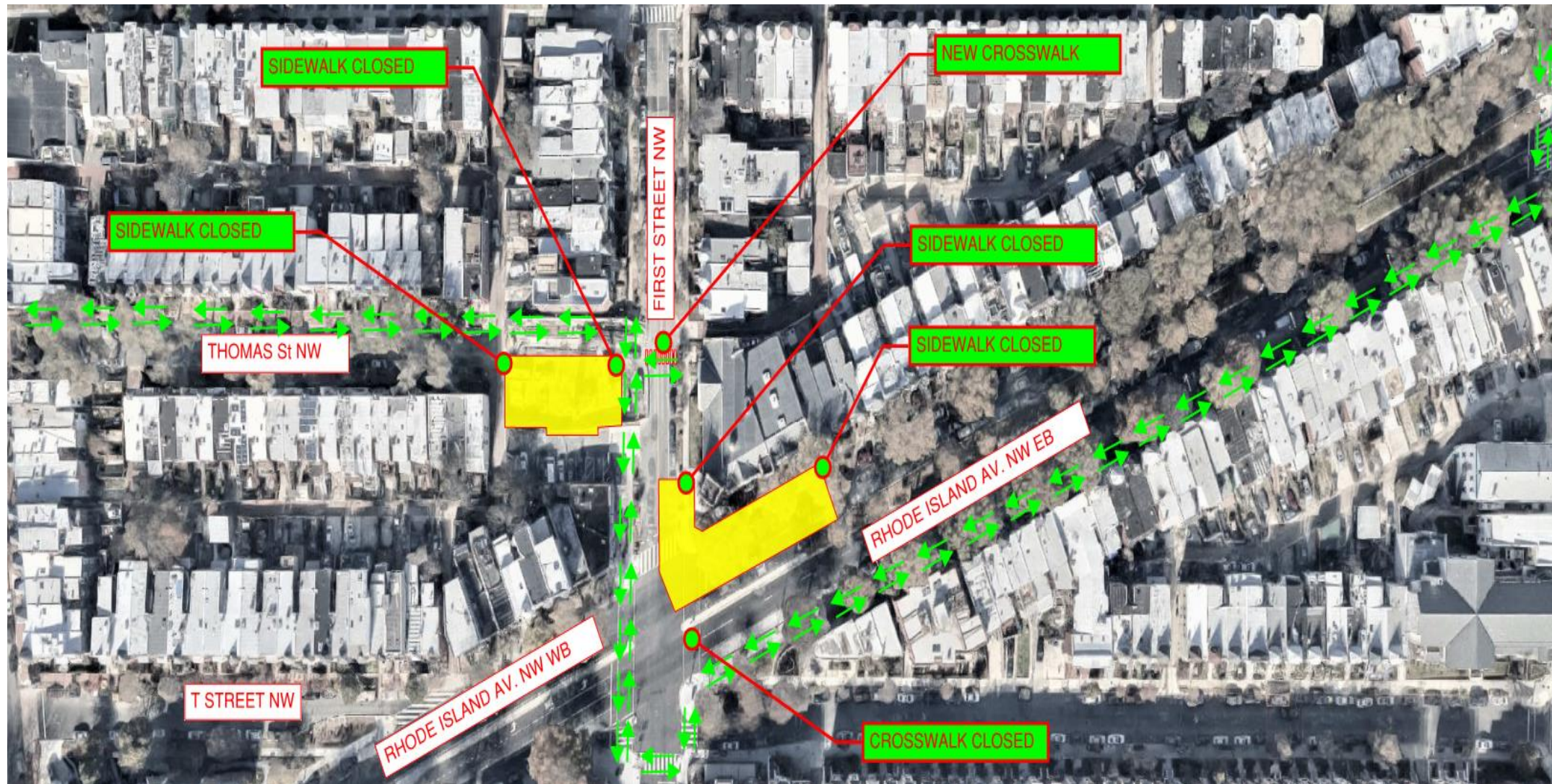
First Street NW Pumping Station Construction Site

Pedestrian Detour, Date To Be Determined

All construction dates are approximate and could change.

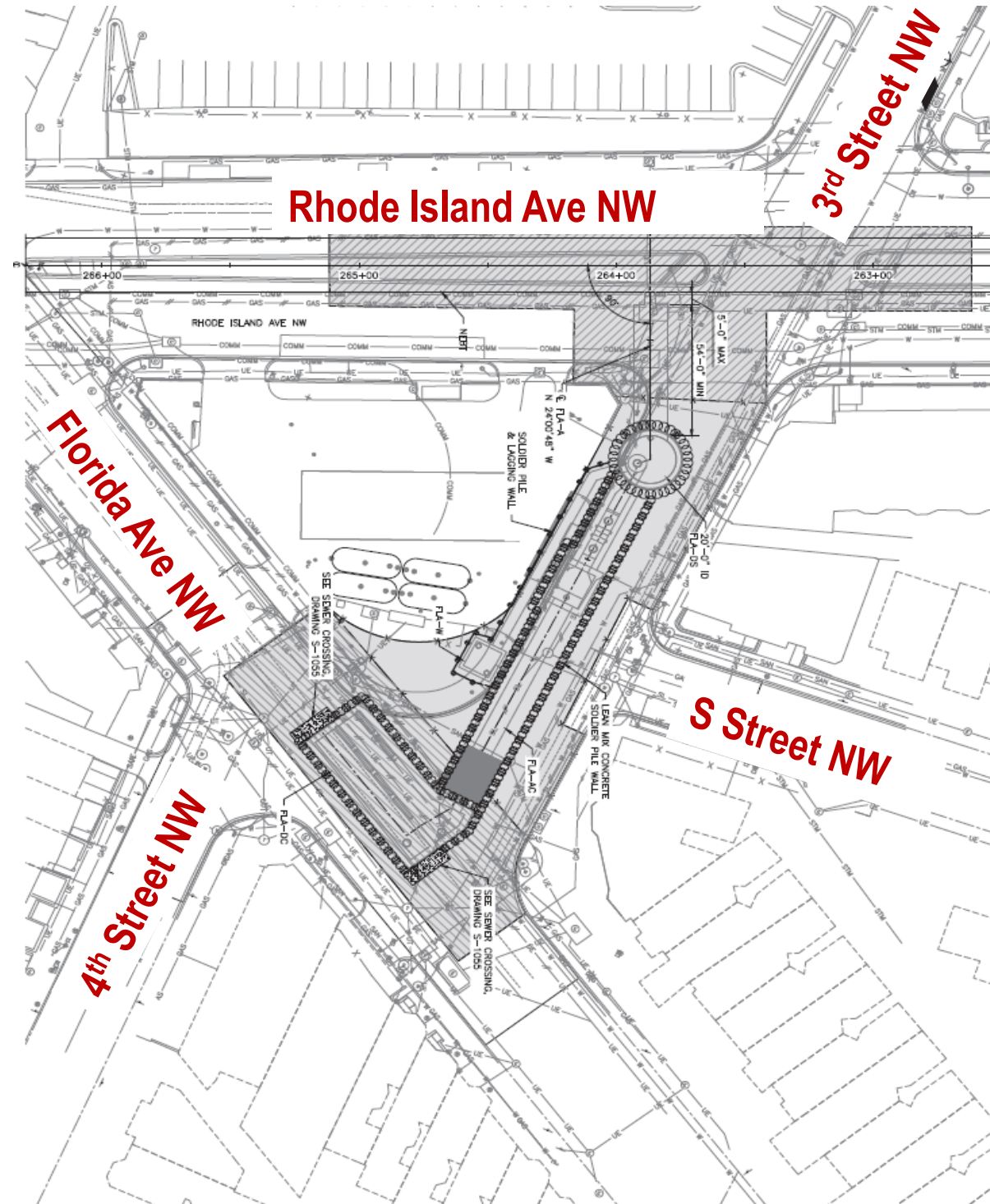
PUMP STATION / FIRST STREET – Pedestrian Detour	
MOT PHASE:	Phase 4 – Jet Grouting
DURATION:	Approximately 2 weeks
MAIN IMPACT:	One crosswalk closed on First Street and one crosswalk closed on Rhode Island Avenue. Sidewalk closed on Rhode Island Avenue.

- WORK ZONE (CSA, Median Removal)
- PARKING RESTRICTION
- MOT DEVICES (Cones, Jersey Barrier, etc..)
- MOT = Maintenance of Traffic



Florida Avenue Construction Site

Construction Site Work Sequencing Overview



Florida Avenue NW Construction Site

3rd Street NW Mobilization, May 2019 – June 2019

All construction dates are approximate and could change.

FLORIDA AVENUE	
MOT PHASE:	Phase 1 – Mobilization
DURATION:	Approximately 5 weeks
MAIN IMPACT:	3 rd Street closed between Rhode Island Ave and Florida Ave

- WORK ZONE (CSA, Median Removal)
- PARKING RESTRICTION
- MOT DEVICES (Cones, Jersey Barrier, etc..)
- MOT = Maintenance of Traffic



Florida Avenue NW Construction Site

Pedestrian Detour, May 2019 – June 2019

All construction dates are approximate and could change.

FLORIDA AVENUE – Pedestrian Detour	
MOT PHASE:	Phase 1 – Mobilization
DURATION:	Approximately 5 weeks
MAIN IMPACT:	3rd Street west sidewalk closed

- WORK ZONE (CSA, Median Removal)
- PARKING RESTRICTION
- MOT DEVICES (Cones, Jersey Barrier, etc..)
- MOT = Maintenance of Traffic






Florida Avenue NW Construction Site

Remove Portions of Sidewalk on Florida Avenue, June 2019

All construction dates are approximate and could change.

FLORIDA AVENUE	
MOT PHASE:	Phase 2.A – Florida Avenue Sidewalk Removal
DURATION:	Approximately 2 weeks
MAIN IMPACT:	3 rd Street closed between Rhode Island Ave and Florida Ave and one lane closure on Florida Ave. Eastbound

-  WORK ZONE (CSA, Median Removal)
-  PARKING RESTRICTION
-  MOT DEVICES (Cones, Jersey Barrier, etc.)
- MOT = Maintenance of Traffic






Florida Avenue NW Construction Site

Pedestrian Detour, June 2019

All construction dates are approximate and could change.

FLORIDA AVENUE – Pedestrian Detour	
MOT PHASE:	Phase 2.A – Florida Avenue Sidewalk Removal
DURATION:	Approximately 2 weeks
MAIN IMPACT:	Crosswalk at Florida Avenue between 3 rd Street and 4 th Street closed. Pedestrian will follow a detour. 3 rd Street west sidewalk closed

-  WORK ZONE (CSA, Median Removal)
-  PARKING RESTRICTION
-  MOT DEVICES (Cones, Jersey Barrier, etc..)
- MOT = Maintenance of Traffic






Florida Avenue NW Construction Site

Install Drop Shaft Secant Piles, June 2019 – August 2019

All construction dates are approximate and could change.

FLORIDA AVENUE	
MOT PHASE:	Phase 3 – Drop Shaft Secant Piles
DURATION:	Approximately 9 weeks
MAIN IMPACT:	3 rd Street closed between Rhode Island Ave and Florida Ave

-  WORK ZONE (CSA, Median Removal)
-  PARKING RESTRICTION
-  MOT DEVICES (Cones, Jersey Barrier, etc.)
- MOT = Maintenance of Traffic



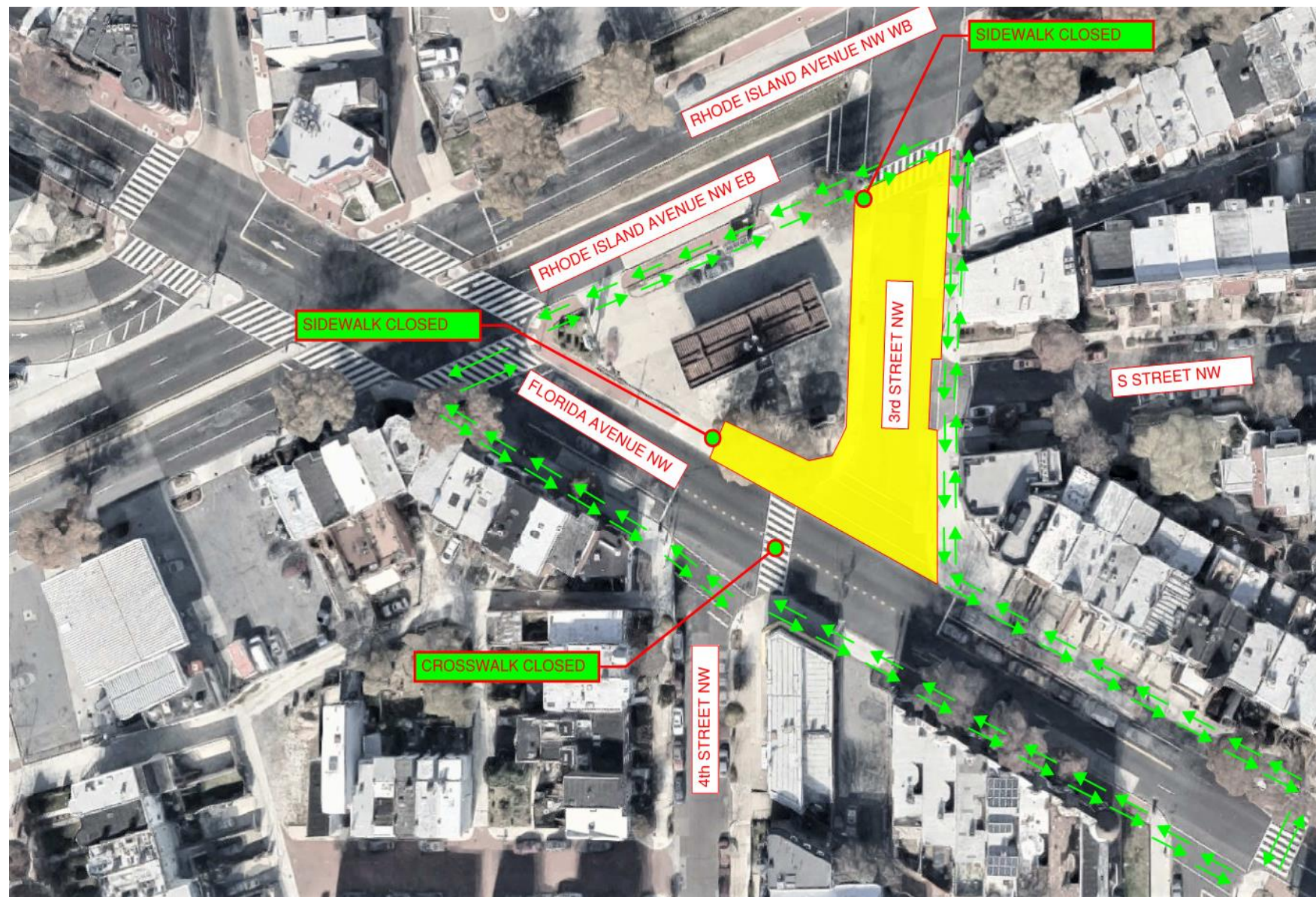
Florida Avenue NW Construction Site

Pedestrian Detour, June 2019 – August 2019

All construction dates are approximate and could change.

FLORIDA AVENUE – Pedestrian Detour	
MOT PHASE:	Phase 3 – Drop Shaft Secant Piles
DURATION:	Approximately 9 weeks
MAIN IMPACT:	Crosswalk at Florida Avenue between 3 rd Street and 4 th Street closed. Pedestrian will follow a detour. 3 rd Street west sidewalk closed

- WORK ZONE (CSA, Median Removal)
- PARKING RESTRICTION
- MOT DEVICES (Cones, Jersey Barrier, etc..)
- MOT = Maintenance of Traffic






Florida Avenue NW Construction Site

Secant Piles for Near Surface Structures, August 2019 – February 2020

All construction dates are approximate and could change.

FLORIDA AVENUE	
MOT PHASE:	Phase 4 – Secant Piles for Near Surface Structures
DURATION:	Approximate 28 weeks
MAIN IMPACT:	3 rd Street closed between Rhode Island Ave and Florida Ave. One lane Eastbound and Westbound on Florida Ave closed

-  WORK ZONE (CSA, Median Removal)
 -  PARKING RESTRICTION
 -  MOT DEVICES (Cones, Jersey Barrier, etc.)
- MOT = Maintenance of Traffic



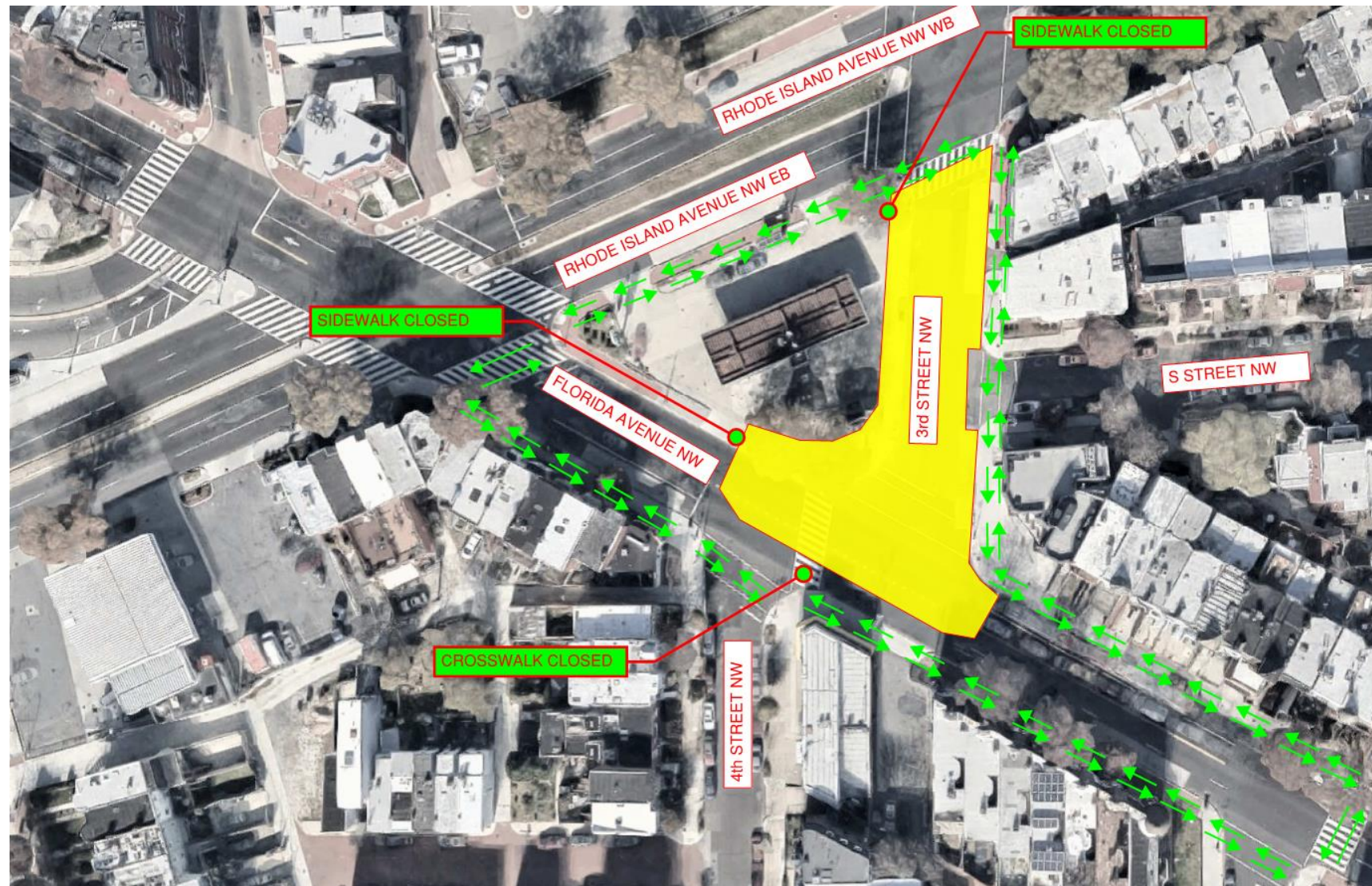
Florida Avenue NW Construction Site

Pedestrian Detour, August 2019 – February 2020

All construction dates are approximate and could change.

FLORIDA AVENUE – Pedestrian Detour	
MOT PHASE:	Phase 4 – Secant Piles for Near Surface Structures
DURATION:	Approximately 28 weeks
MAIN IMPACT:	Crosswalk at Florida Avenue between 3 rd Street and 4 th Street closed. Pedestrian will follow a detour. 3 rd Street west sidewalk closed

- WORK ZONE (CSA, Median Removal)
- PARKING RESTRICTION
- MOT DEVICES (Cones, Jersey Barrier, etc..)
- MOT = Maintenance of Traffic

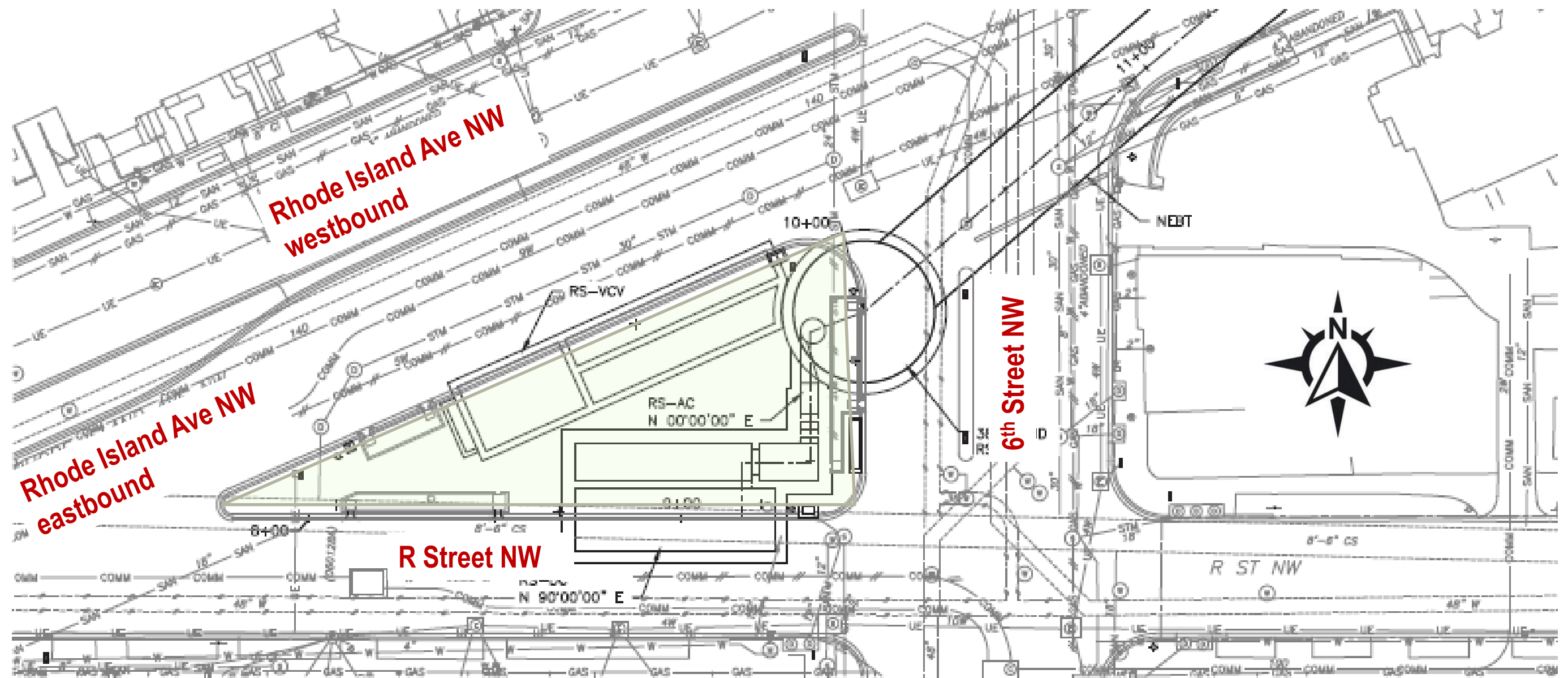


R Street NW Construction Site

Construction Site Work Sequencing Overview

Tree Removal, June 2019 – Approx. two weeks

All construction dates are approximate and could change.



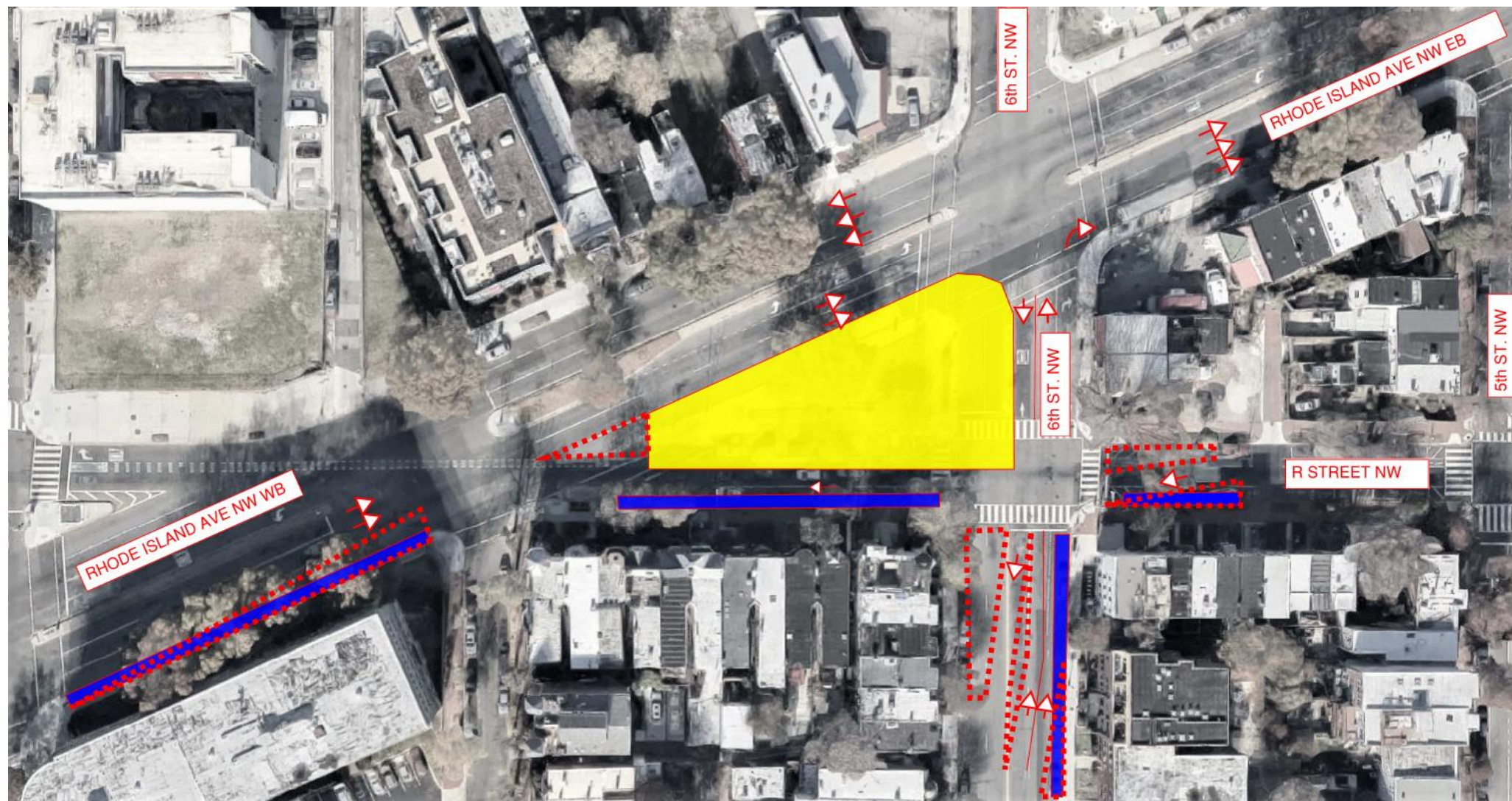
R Street NW Construction Site

Cooper Gordon Park Mobilization & Slurry Wall Construction, June 2019 – December 2019

All construction dates are approximate and could change.

R STREET	
MOT PHASE:	Phase 1 – Full mobilization and drop shaft slurry wall construction
DURATION:	Approximately 26 weeks
MAIN IMPACT:	One lane closure on Rhode Island Ave Eastbound. Reducing and shifting 6 th Street and R Street

- WORK ZONE (CSA, Median Removal)
- PARKING RESTRICTION
- MOT DEVICES (Cones, Jersey Barrier, etc..)
- MOT = Maintenance of Traffic



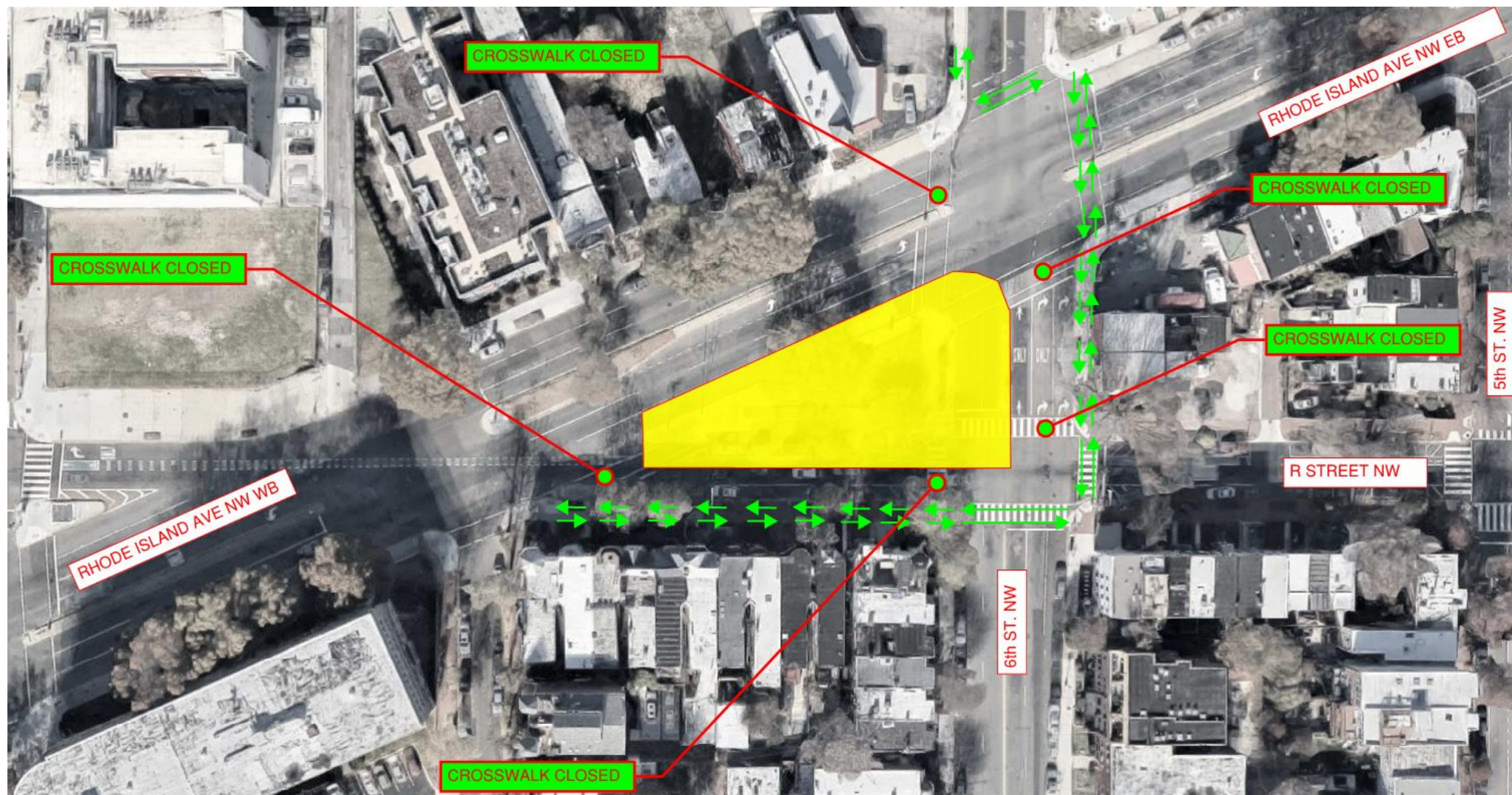
R Street NW Construction Site

Pedestrian Detour

All construction dates are approximate and could change.

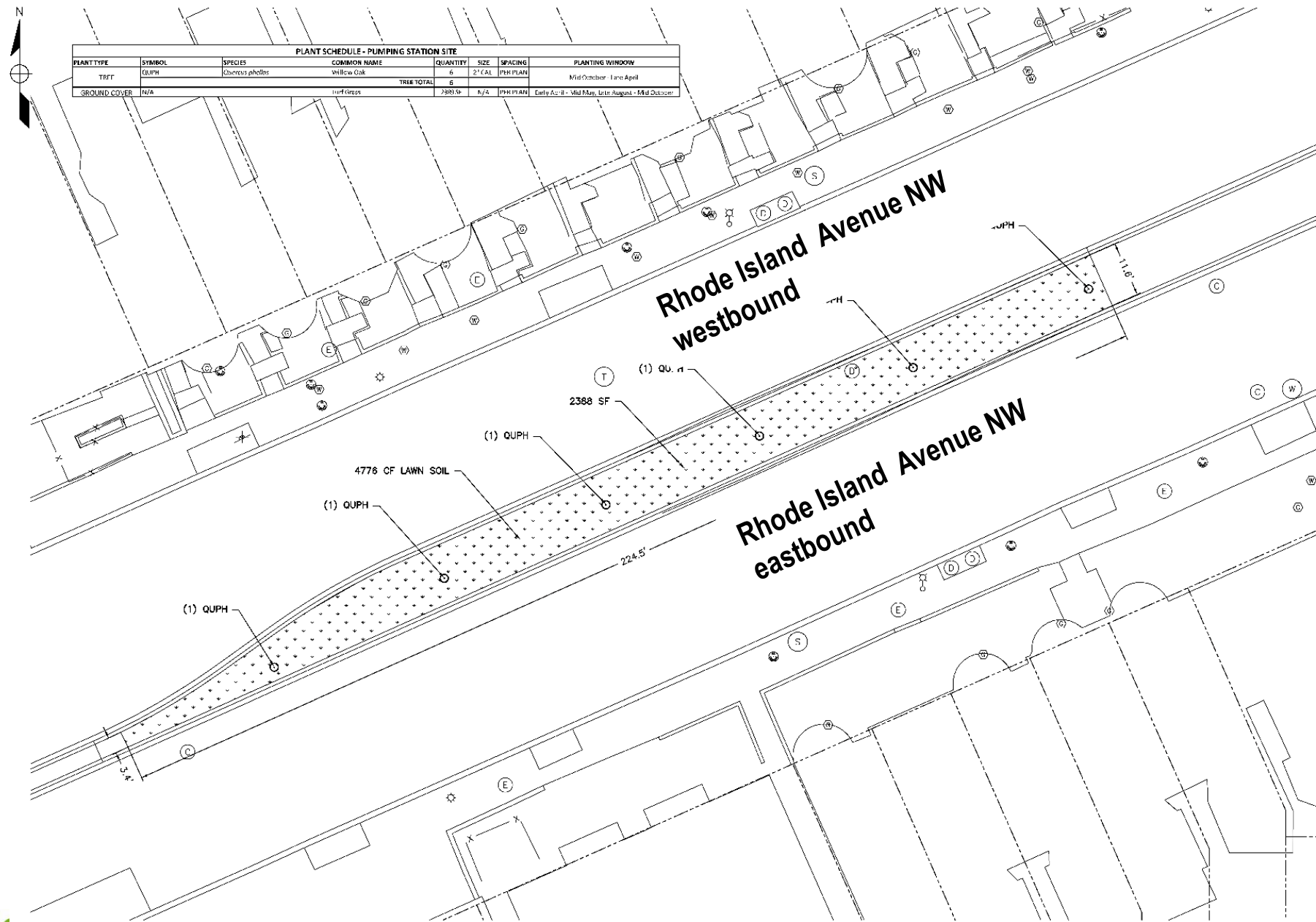
R STREET – Pedestrian Detour	
MOT PHASE:	Phase 1 – Full mobilization and drop shaft slurry wall construction
DURATION:	Approximately 26 weeks
MAIN IMPACT:	Crosswalk closed along 6 th Street NW and R Street NW

- WORK ZONE (CSA, Median Removal)
- PARKING RESTRICTION
- MOT DEVICES (Cones, Jersey Barrier, etc..)
- MOT = Maintenance of Traffic



Tree Replanting Plans

First Street NW Pumping Station



Willow Oak

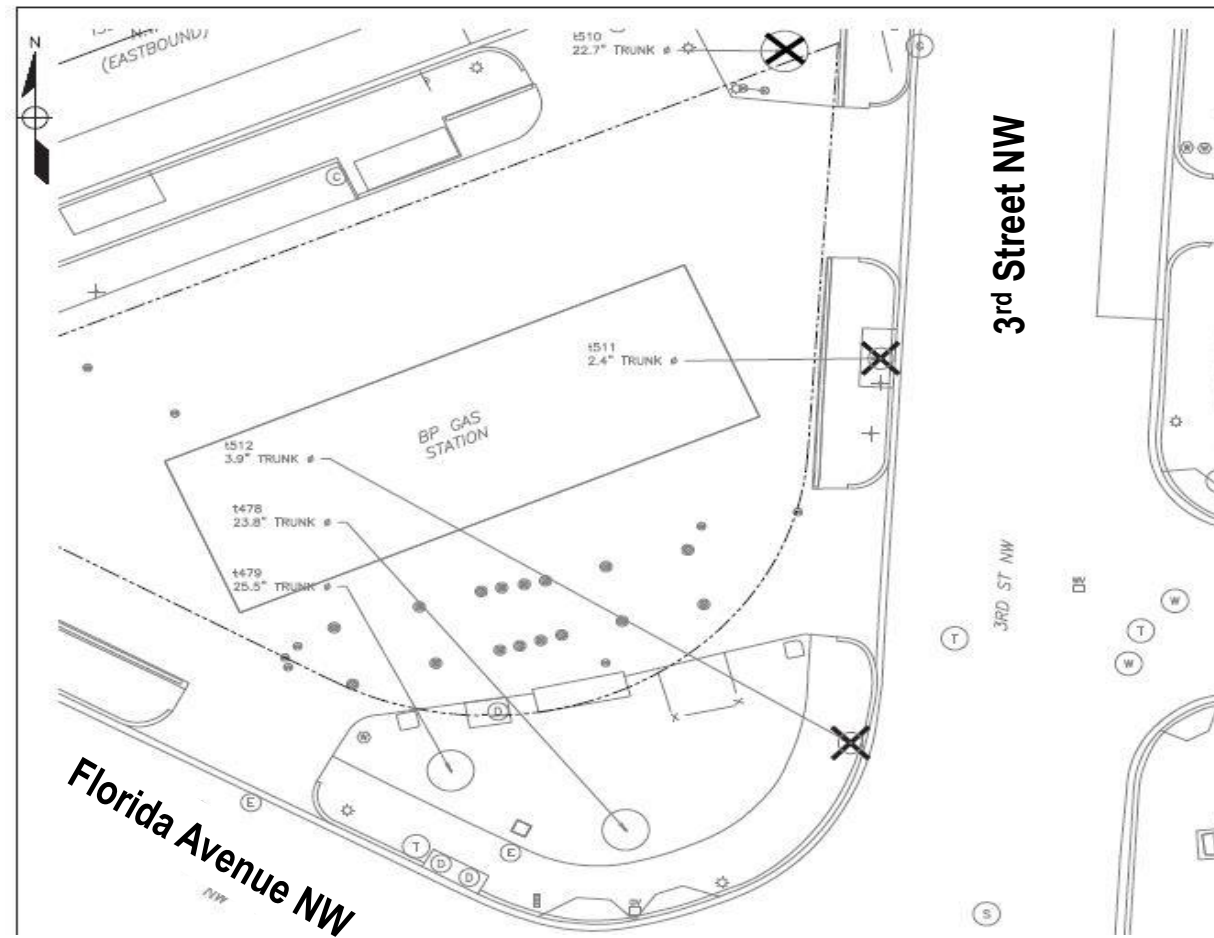


© Robert O'Brien

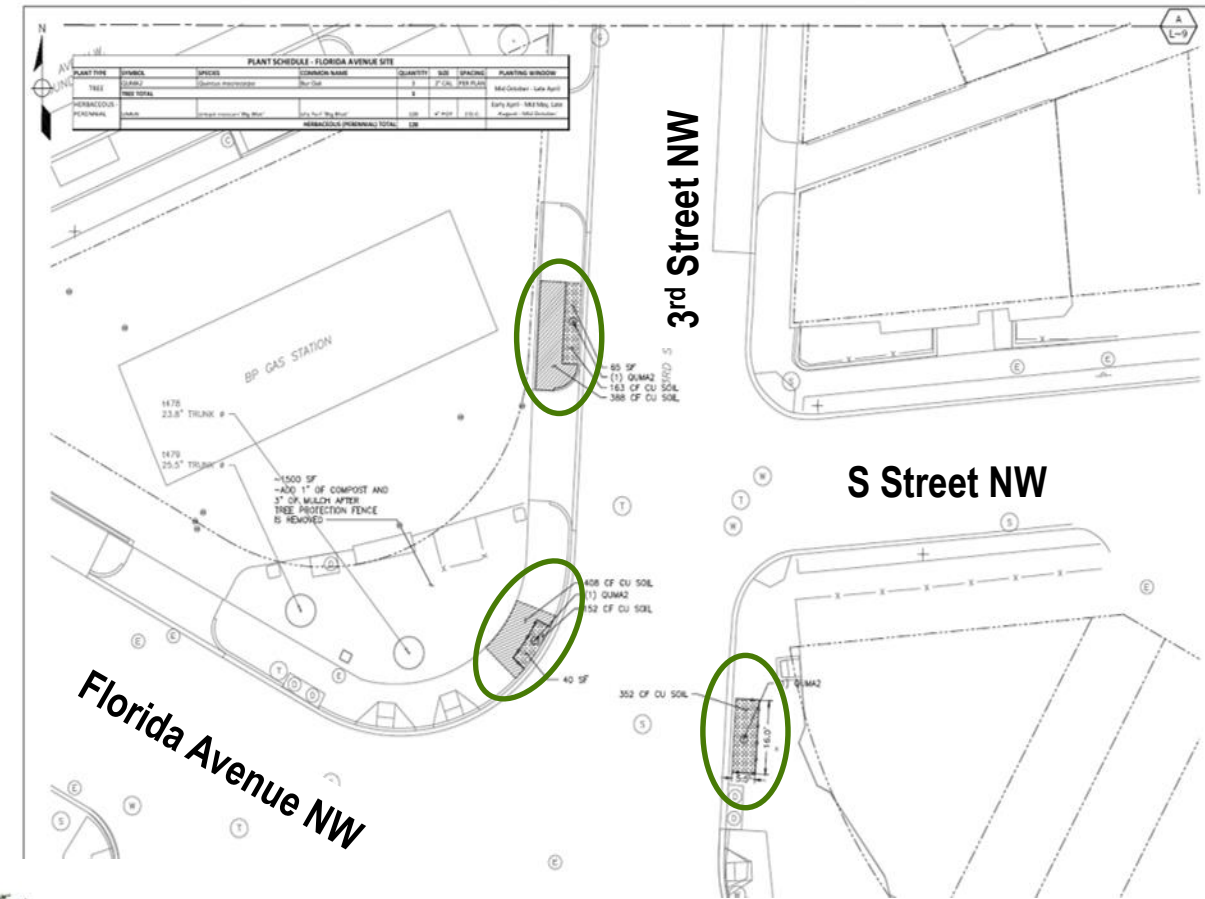
When NEBT construction is complete, the medians will be restored and new trees will be planted.

Tree Replanting Plans

Florida Avenue NW Construction Site



X = Trees to be removed.



○ = Trees to be replanted.

Bur Oak



© Robert O'Brien

Tree and Park Restoration Plans

R Street NW Construction Site



Restoration Plan and Renderings of Cooper/Gordon Park

Questions?

