

*Clean Rivers Project  
Northeast Boundary Tunnel*

*Tunnel Forum Meeting*

***WELCOME NEIGHBORS!***

January 16, 2020

Mt. Bethel Baptist Church – 75 Rhode Island Avenue, NW

# Agenda

---

- **Welcome**
- **Main Street Update**
- **Responses to October 10<sup>th</sup> Tunnel Forum Concerns**
- **Bryant Street APA**
- **Construction Sites Schedules**
  - **First Street NW Pumping Station**
  - **T Street NW**
  - **Florida Avenue NW**
  - **R Street NW**

- **Questions**

**Note: Return your comment sheets to the front desk.**



## Contact Information

**Alexander M. Padro, Executive  
Director**

**875 N Street NW  
Washington, DC 20001**

**202-265-SHAW  
info@shawmainstreets.org**

**shawmainstreets.org**

**NORTH  
NCAPITOL  
MAIN STREET**

Office Location:

**1410 North Capitol Street, NW, Washington, D.C. 20001**

Mailing Address:

**P.O. Box 29068, Washington, D.C. 20002**

**202.298.0698 | [info@northcapitoldc.com](mailto:info@northcapitoldc.com)**

**[www.northcapitoldc.com](http://www.northcapitoldc.com)**

# Artwork Coordinated by North Capitol Main Street



- Student artists from Howard University

# Anacostia River Tunnel System Performance to Date

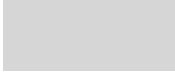

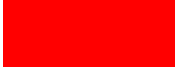


- Over 6.9 billion gallons of combined sewer overflow captured to date
- Over 2,500 tons of trash, debris, and other solids captured
- Exceeding predicted capture rate (90% > 80%)
- First year in operation was the wettest year on record for the District of Columbia

# Bryant Street Alternative Parking Area

## 2<sup>nd</sup> & Bryant Streets, NW



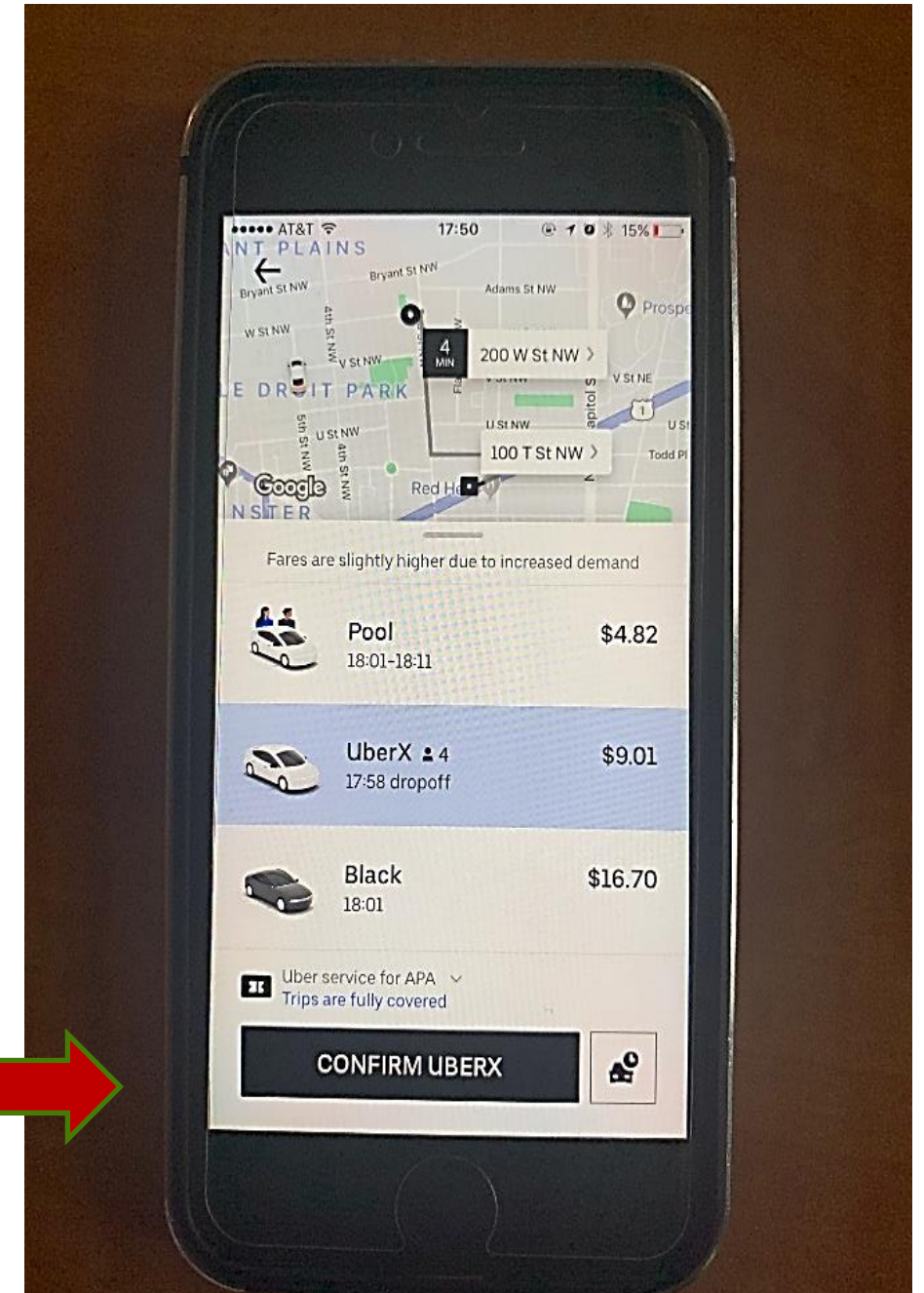
-  Area eligible for APA
-  Bryant St. APA
-  Construction Site

# Bryant Street Alternative Parking Area

## 2<sup>nd</sup> & Bryant Streets, NW

### How to Use the Uber Service for the Bryant Street APA

- Register for Bryant Street APA. (email: [dccleanrivers@dcwater.com](mailto:dccleanrivers@dcwater.com))
- You must have a smartphone with the Uber App installed.
- Check your email for a link. Click on the link, and the Uber App will be opened.
- Follow the instructions to download Uber Vouchers.
- When you are ready to ride, open the Uber App.
- Type in your destination.
- If you are within the geographically designated area, you will see a screen like this





# Construction Site Updates

Daniele Nebbia, Project Manager, Ray Bernardo; Matt Wolniak, Traffic Engineers



# Pedestrian / Traffic Calming



## Pedestrian Modifications

- Upgraded Signage
- Reduced Crossing Distances
- Modified Work Zones

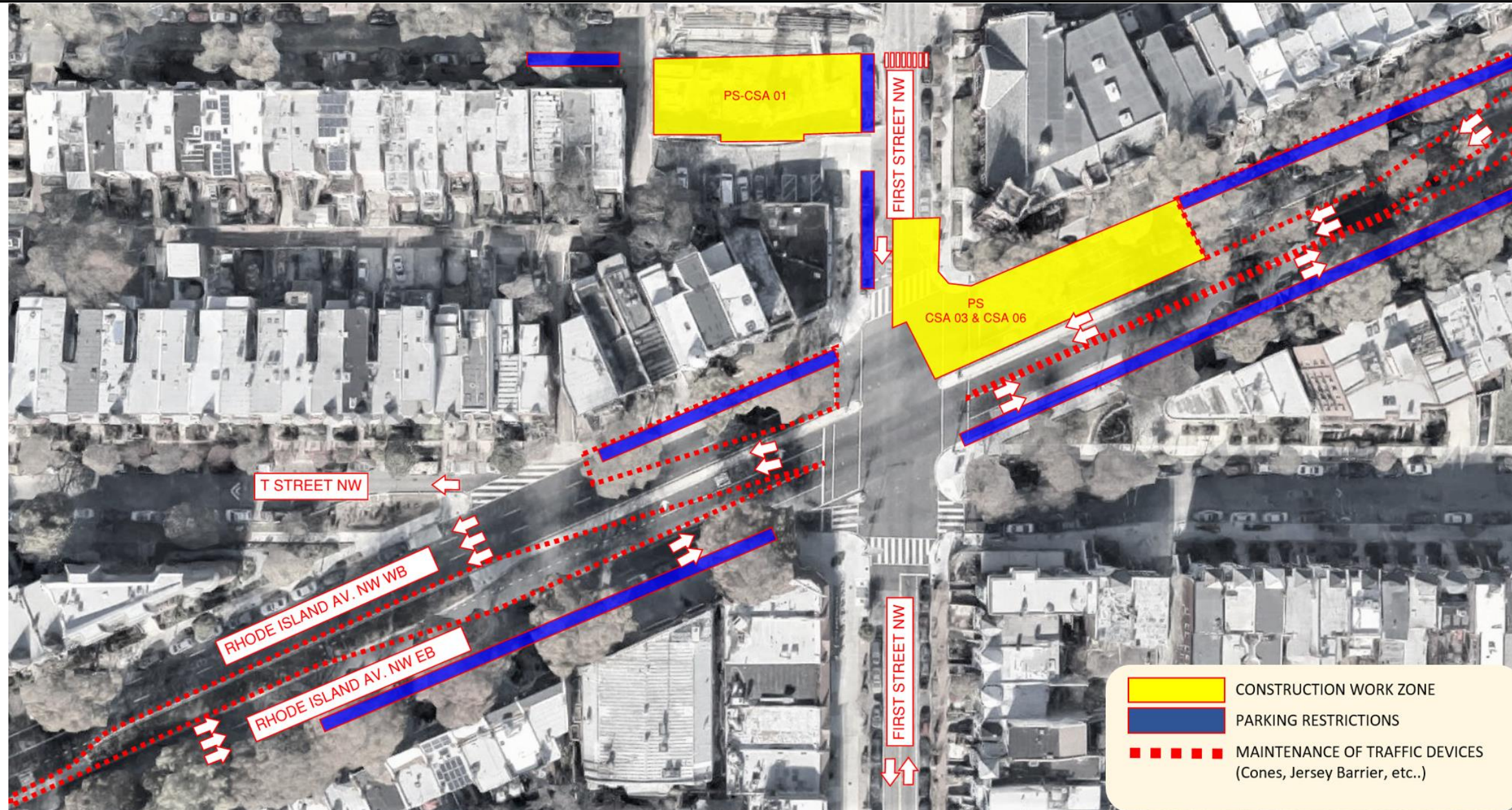


## Traffic Calming Measures

- Delineators
- Pavement Markings
- Speed Humps (to come)

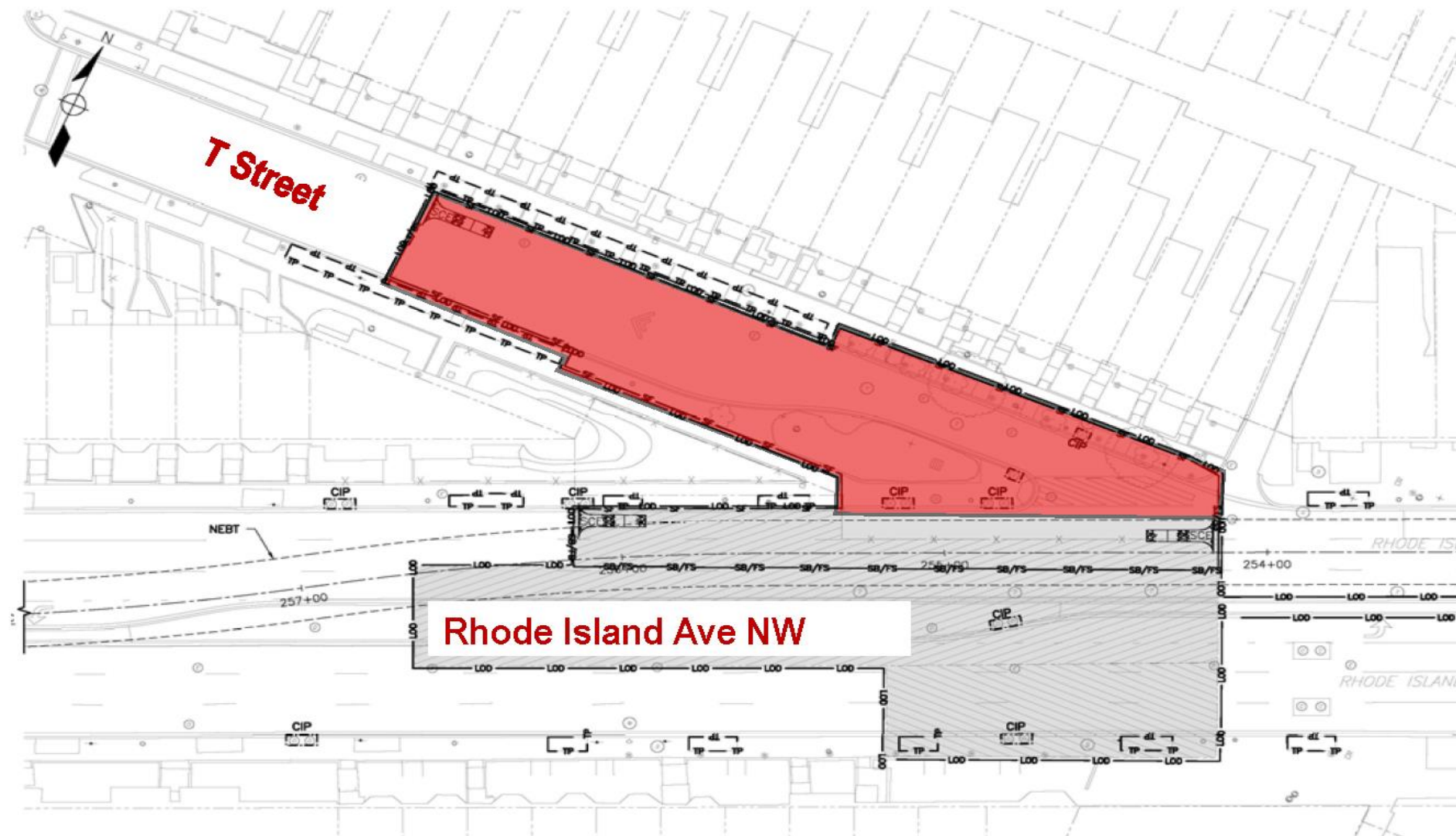
# First Street NW Pumping Station Construction Site

## Jet Grouting, Travel Lane & Parking Restrictions



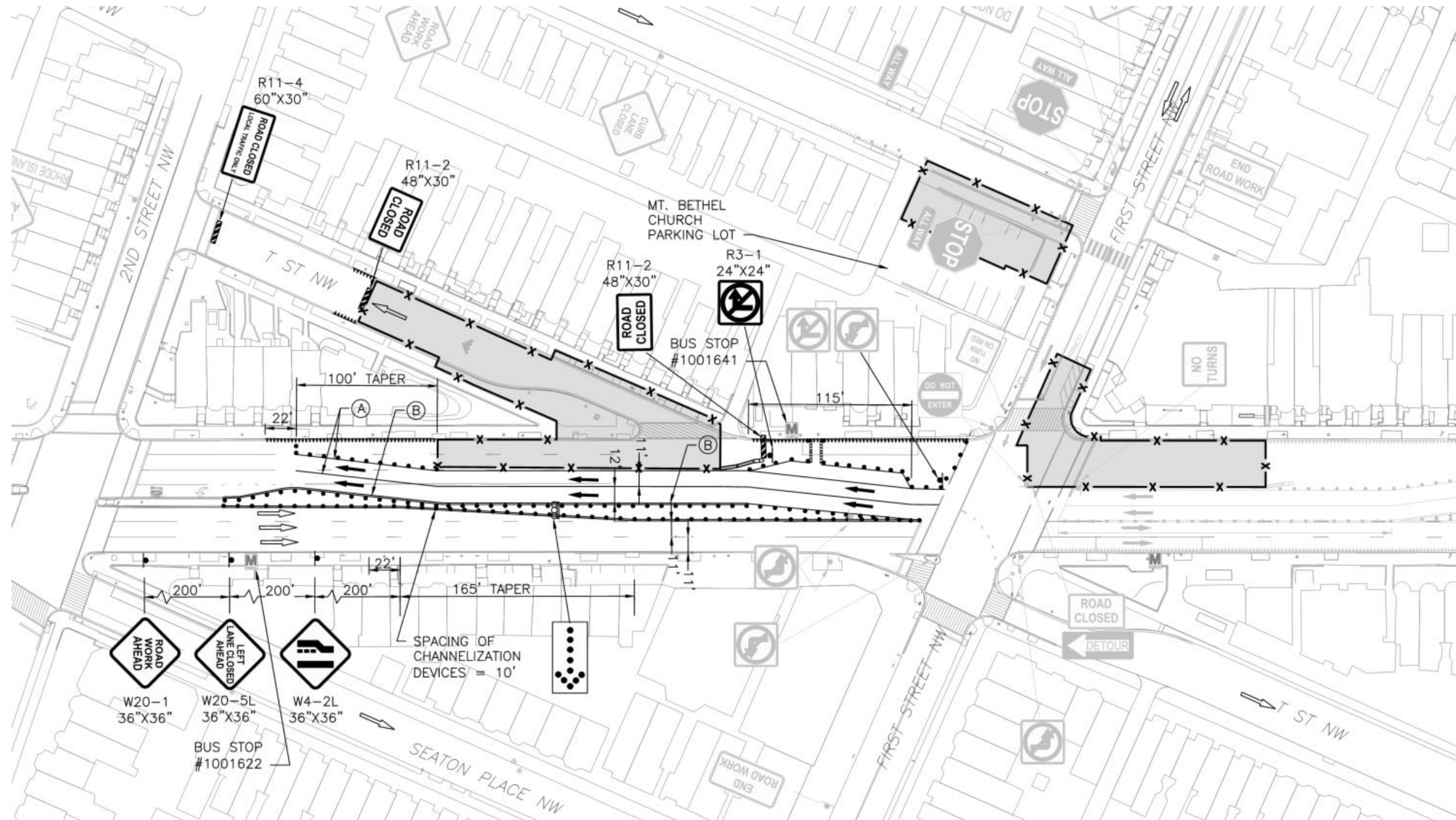
# T Street NW

## Construction Site Work Sequencing Overview



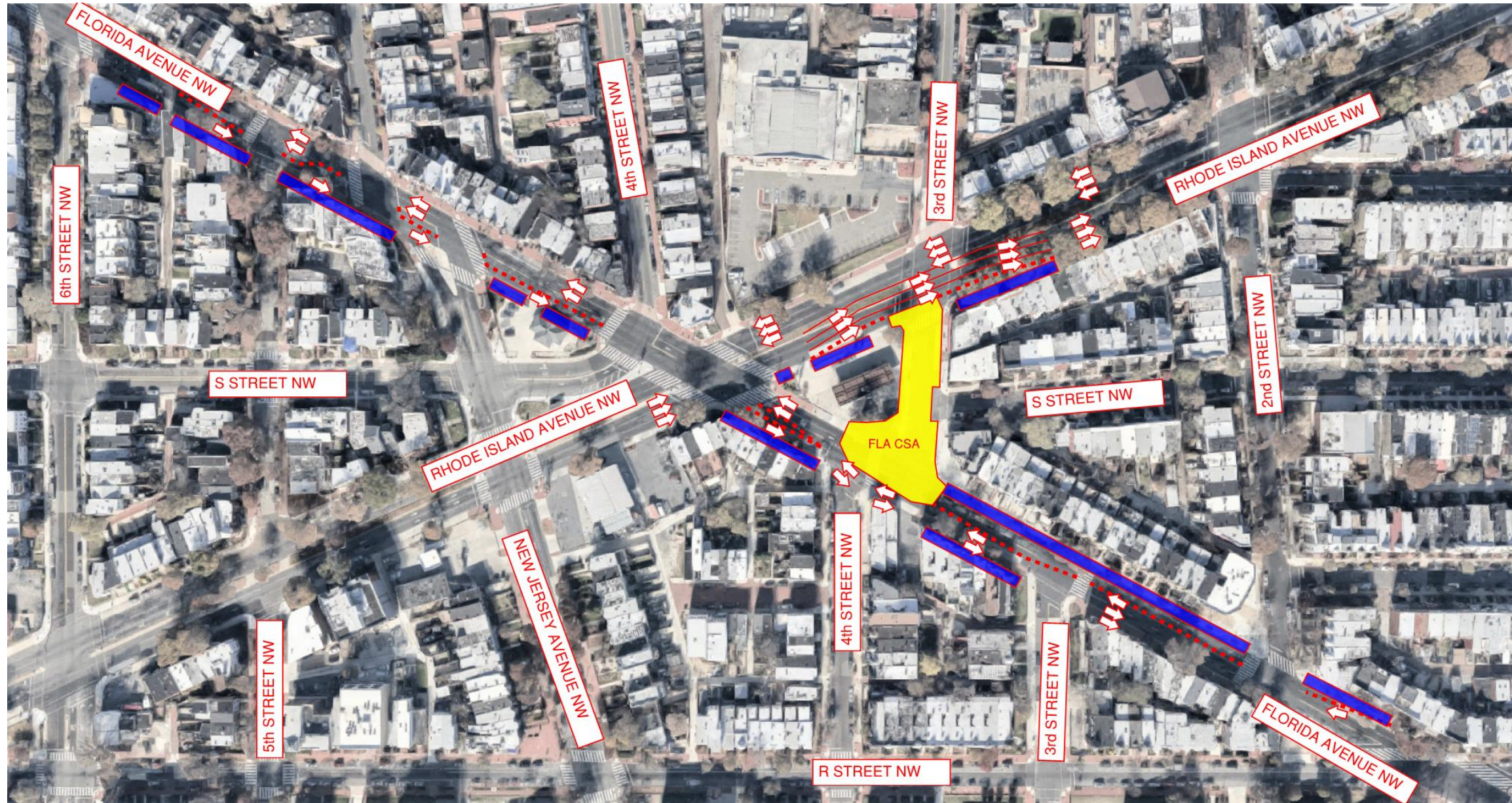
T Street	
MOT PHASE:	Phase 1 Mobilization – February/March 2020
DURATION:	Approximately 21 months
MAIN IMPACT:	T Street closed

# T Street Road Closure



# Florida Avenue NW Construction Site

## Secant Piles for Near Surface Structures



FLORIDA AVENUE	
MOT PHASE:	Phase 6 – Secant Piles for Near Surface Structures
DURATION:	Approximately 50 weeks remaining
MAIN IMPACT:	3 <sup>rd</sup> Street closed between Rhode Island Ave and Florida Ave. One lane Eastbound and Westbound on Florida Ave closed

# Florida Avenue NW Construction Site

## Secant Piles for Near Surface Structures, Pedestrian Detour

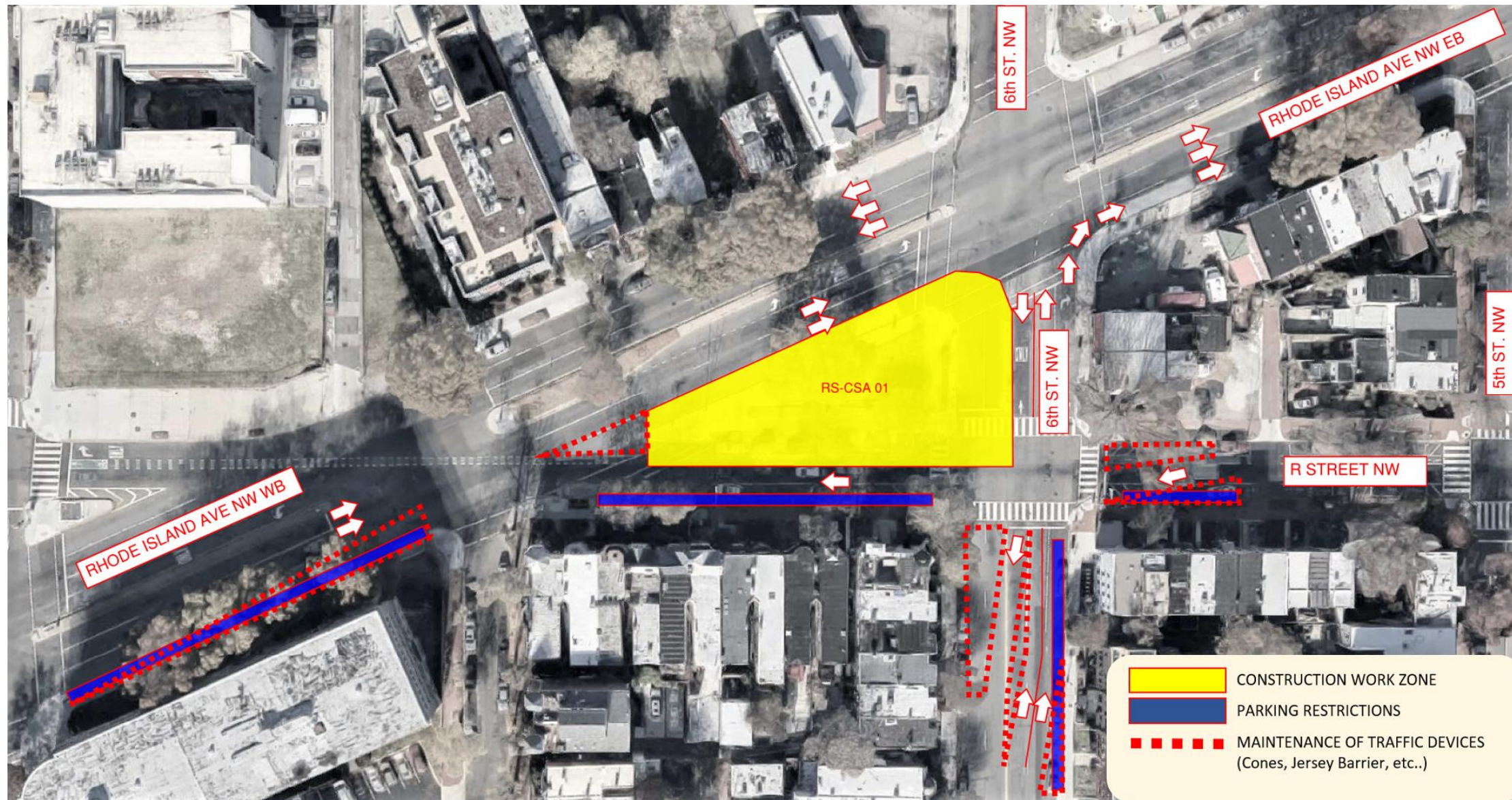


### FLORIDA AVENUE – Pedestrian Detour

MOT PHASE:	Phase 6 – Secant Piles for Near Surface Structures
DURATION:	Approximately 50 weeks remaining
MAIN IMPACT:	Crosswalk at Florida Avenue between 3 <sup>rd</sup> Street and 4 <sup>th</sup> Street closed. Pedestrian will follow a detour. 3 <sup>rd</sup> Street west sidewalk closed

# R Street NW Construction Site

## Slurry Wall Construction

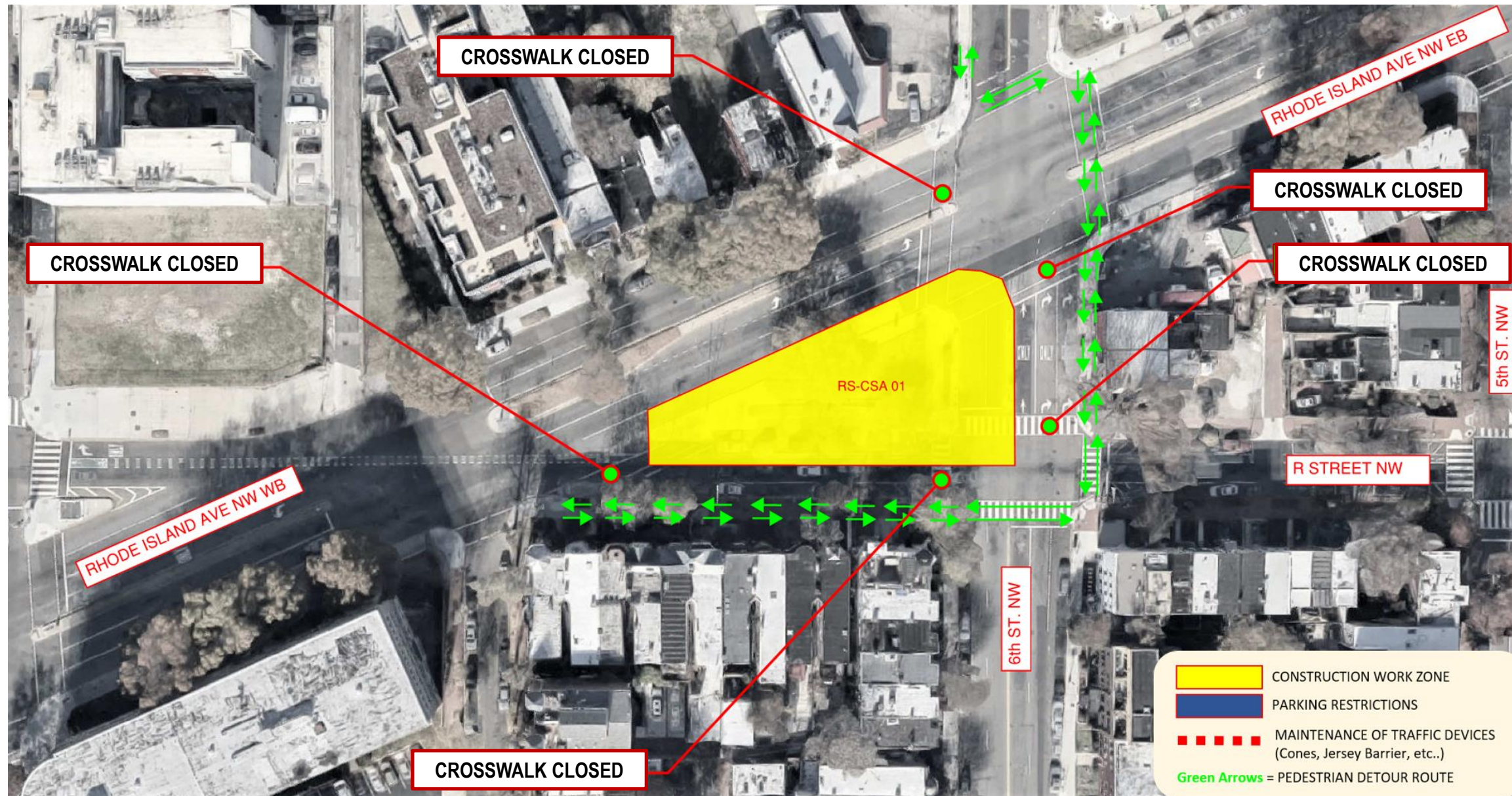


R STREET	
MOT PHASE:	Phase 1 – Full mobilization and drop shaft slurry wall construction
DURATION:	Approximately 6 weeks
MAIN IMPACT:	One lane closure on Rhode Island Ave Eastbound. Reducing and shifting 6 <sup>th</sup> Street and R Street



# R Street NW Construction Site

## Mobilization & Slurry Wall Pedestrian Detour



### R STREET – Pedestrian Detour

MOT PHASE:	Phase 1 – Full mobilization and drop shaft slurry wall construction
DURATION:	Approximately 6 weeks
MAIN IMPACT:	Crosswalk closed along 6 <sup>th</sup> Street NW and R Street NW

# Questions?

