

*Clean Rivers Project
Northeast Boundary Tunnel*

Tunnel Forum Meeting

First Street Pumping Station, T Street NW, Florida Avenue NW, R Street NW Construction Sites

GREETINGS NEIGHBORS!

April 8, 2021

Welcome to the Tunnel Forum Virtual Meeting!



Participation Tips:

- Online meetings are subject to your bandwidth limitations. If your connection to the meeting should freeze, please exit and reenter the meeting to refresh your connection.
- Participants may opt to turn on or off your video.
- All participant lines are muted to minimize disruptions.
- The Questions and Answers period will be held at the end of the presentation. [Please hold your questions until the Q&A portion of the meeting.](#)
- During the Question and Answer period of the meeting, we will acknowledge questions from participants who are online and on phone.
- **ONLINE PARTICIPANTS:** send your questions to the Host by using the Chat mode. You may also click on “Participants” to raise your hand for a question.
- **PHONE PARTICIPANTS:** press *9 to alert us that you want to ask a question. We will unmute you when it’s your turn to ask a question.

Agenda

- **Site Safety**
- **Anacostia River Tunnel System**
- **Responses to Recent Concerns**
- **Construction Site Updates**
 - [First Street NW Pumping Station](#)
 - [T Street NW](#)
 - [Florida Avenue NW](#)
 - [R Street NW](#)
 - **Tunnel Boring Machine Arrival**
- **LeDroit Park & Bryant Street Alternative Parking Areas**
- **NEBT Claims Process**
- **Main Street Partnership**

We Want Everyone To Be Safe

Alan Etter



The city's response to Covid-19 is evolving. To see more on the city's response, go to coronavirus.dc.gov. For coronavirus testing in DC, call **1-855-363-0333**.

The NEBT Team has taken the following actions to ensure the safety of employees:

- Employees in the tunnel must undergo temperature screening at the start of their shift
- Masks and other personal protective equipment must be worn by all employees on site
- Employees maintain at least six feet of distance when possible whether on above or below ground operations
- All shared tools & equipment are regularly sanitized
- Please let us know how to make our engagement with you better

Outreach During Quarantine

Our team continues to engage the community through virtual meetings, email, door-to-door newsletter distribution (when necessary) and can be reached by email at dccleanrivers@dcwater.com and by calling the NEBT Hotline at **1-800-988-6151**.

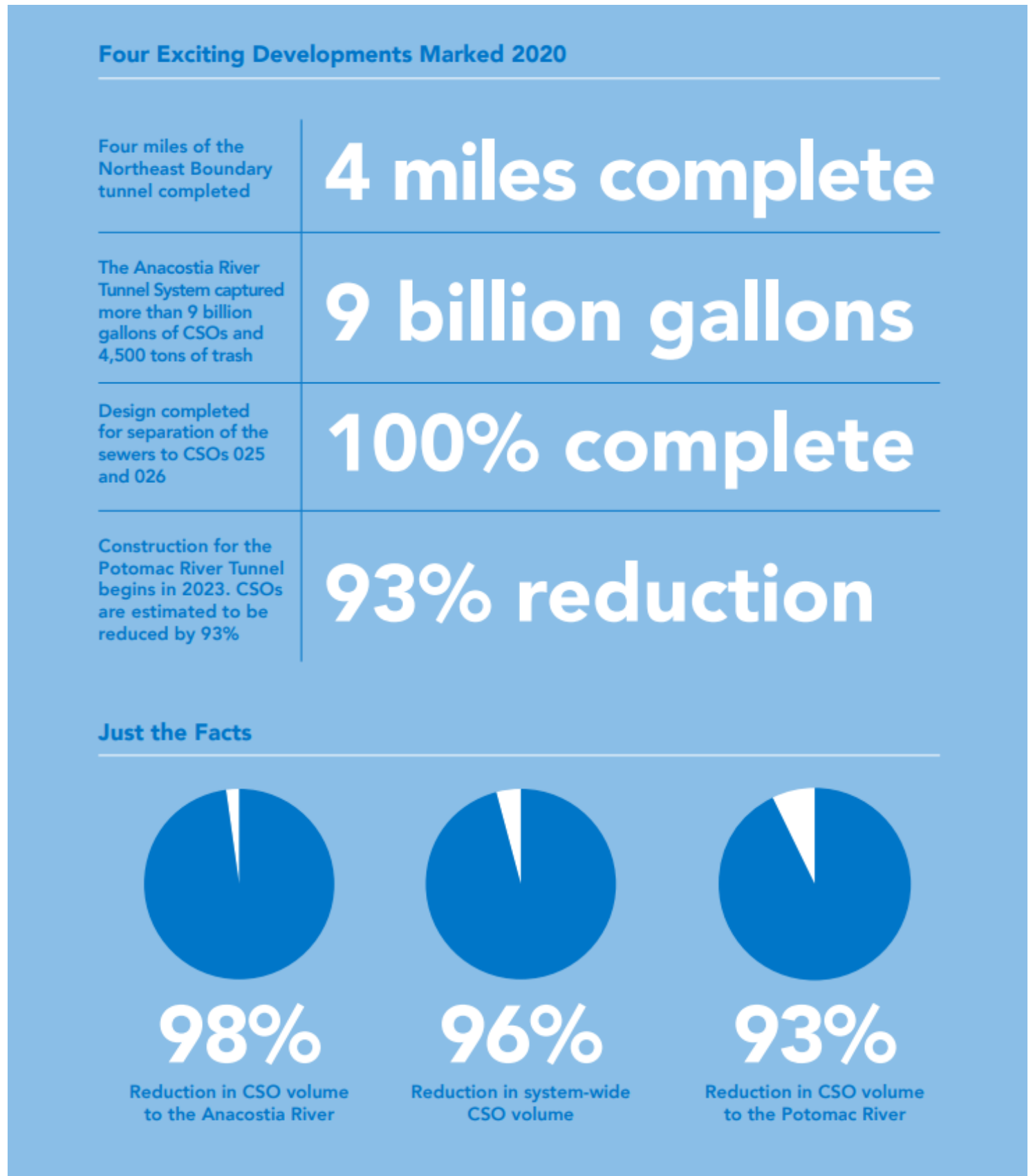
Northeast Boundary Tunnel Project: Benefits

William Levy

- Reduce the frequency and magnitude of street flooding
- Significantly mitigate the frequency, magnitude, and duration of sewer flooding and basement backups in the Northeast Boundary drainage area
- Reduce risks to human health
- Control *combined sewer overflow (CSO) discharges to the Anacostia River, significantly improving water quality
- Prevent deterioration of historic resources from water damage caused by flooding



* CSO = Combined Sewer Overflows.
Learn more at dcwater.com/css.



Source: [annual_report_2020.pdf \(dcwater.com\)](#)

Responses to Recent Concerns

Andy Galli

CONCERN	RESPONSE
Asked to create lane markers through the R St intersection with 6th St to guide vehicles (cars and bikes) to exit the intersection.	Construction team covered up old conflicting bicycle markings, added extension lines through the intersection and added post-mounted delineators at point where motorists and bicycles transition.
Tree leaves and Christmas trees are still left on our street.	Crews collected trees, raked leaves into piles and coordinated with DPW for pick-up.
Resident asked for a flagger for the T St alley at Thomas St to help vehicles back out.	Resident engineer was notified and went to site to resolve problem.
DC Water & Contractor vehicles blocking access to the alley behind R street.	The Resident Engineer at the R Street Construction Site reminded workers that vehicles should not be blocking alley access.
Resident asked about the Jet Grout Plant silos located in the Mt. Bethel Baptist Church parking lot at First St. NW.	The Jet Grout Plant silos were removed in January 2021.
Crews and hauling trucks at T Street Construction Site arriving at worksite early and starting equipment.	Resident Engineer spoke with crews regarding construction and machine start time.
When will the large drill be moved from the T Street Construction Site?	The caisson rig or secant drill was removed following work on November 5, 2020 and returned again in January and March 2021 to complete the installation of piles in two phases and demobilized on March 11, 2021. Piling is scheduled one last time in RIA during the summer of 2021.
Traffic is stalled on 4th St NW because of detour from Pepco construction.	Worked with DDOT to change signal timing at 4th St and Florida Ave to improve traffic flow.

Construction Site Updates

Gianluca Pianezze and Matt Wolniak



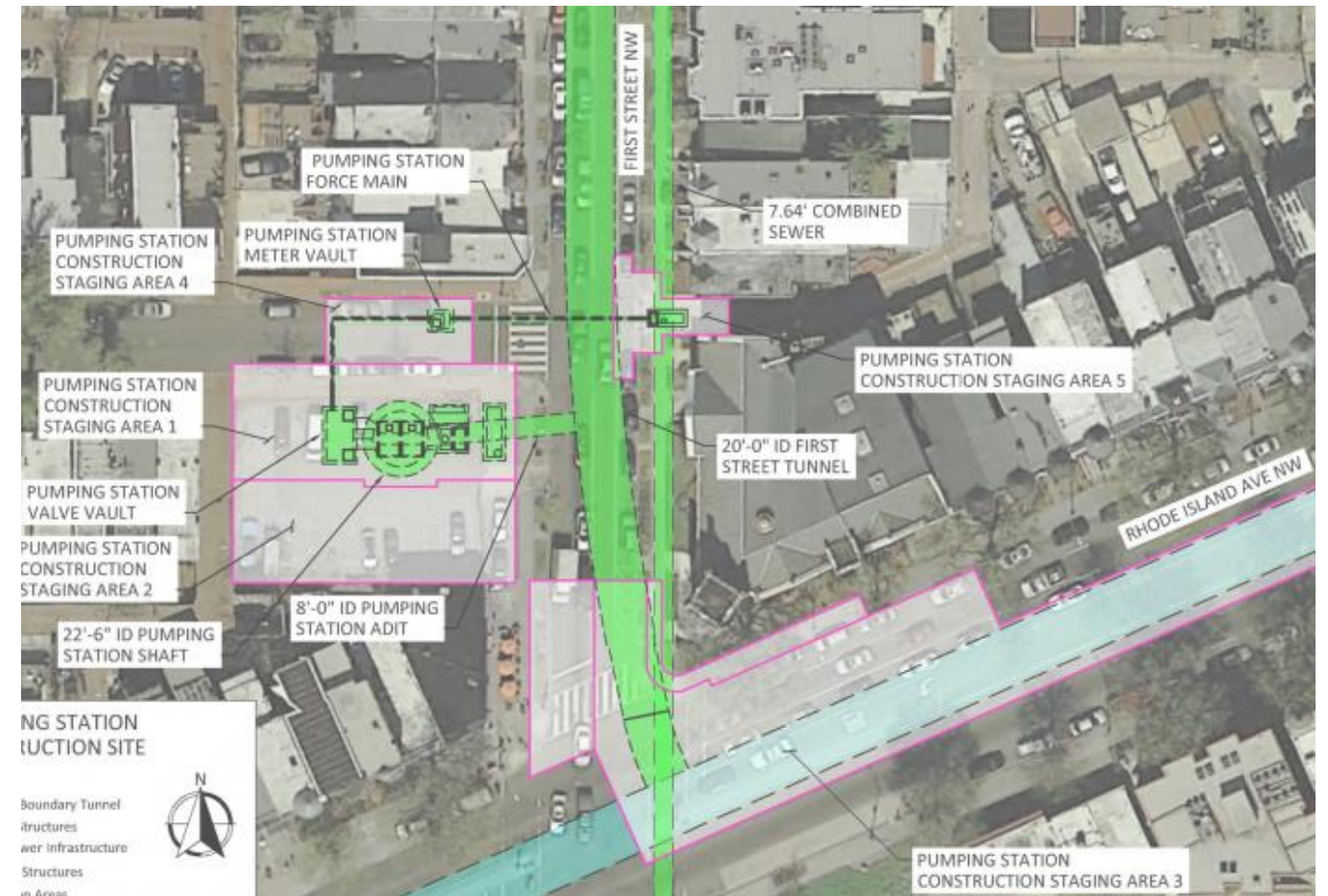
First Street Pumping Station Construction Site

Work Overview

Current Activities: Repaving roadway at the intersection of First Street and Rhode Island Avenue NW. Remove jet grout lines from First Street NW southbound lane.

Later: Demolition will begin on the pump station in the Spring of 2023 and complete in the Summer of 2023. It will include:

1. Removing and decommissioning pumps and electrical system.
2. Removal of structures to 6' below grade and backfilling.
3. Reestablish parking lot and landscape.

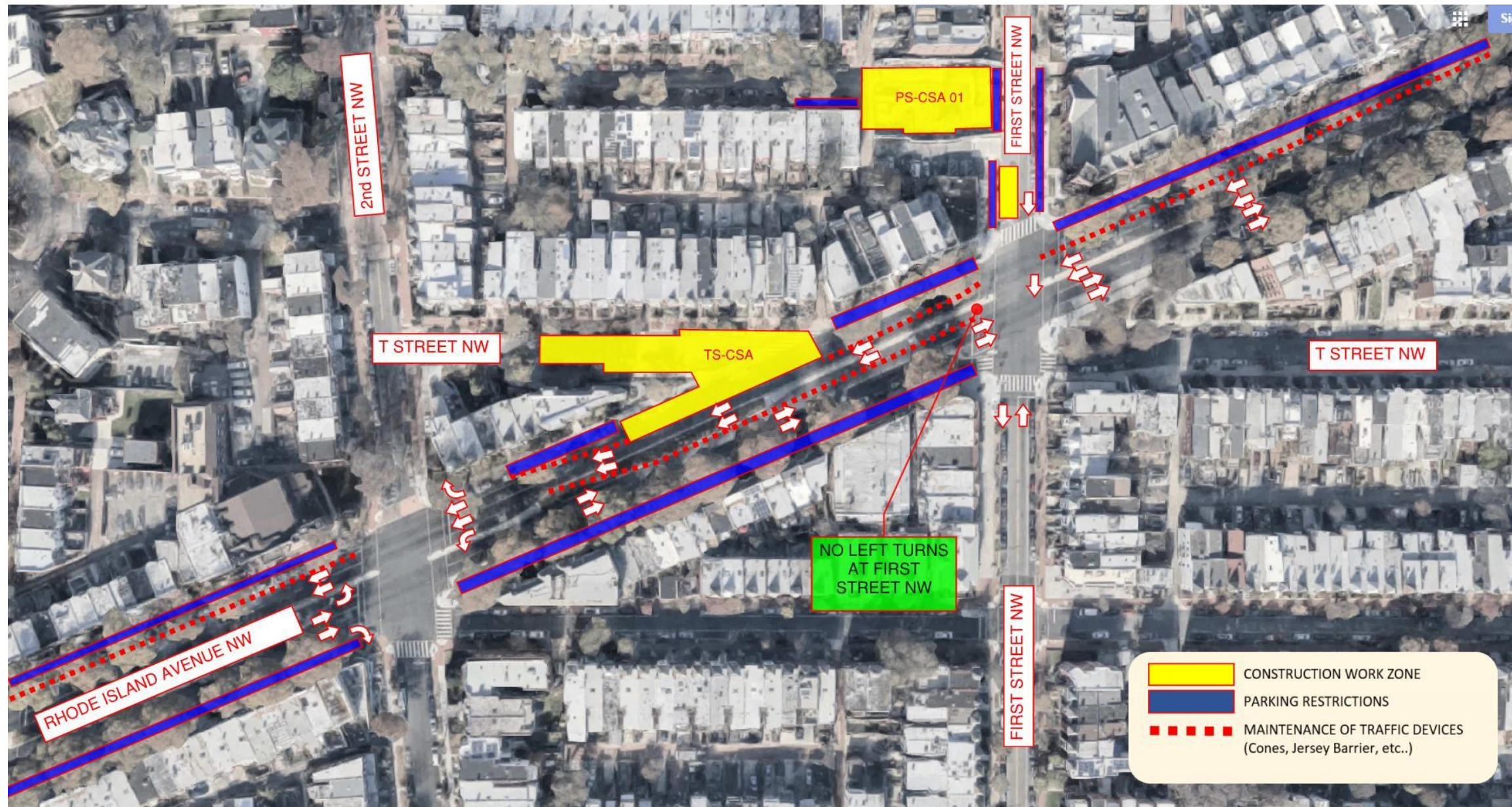


CONSTRUCTION WORK HOURS

Monday – Friday	7:00 AM to 7:00 PM
Saturday	7:00 AM to 5:00 PM
Construction End Date	Summer 2023

First Street Pumping Station Construction Site

Current Traffic Pattern



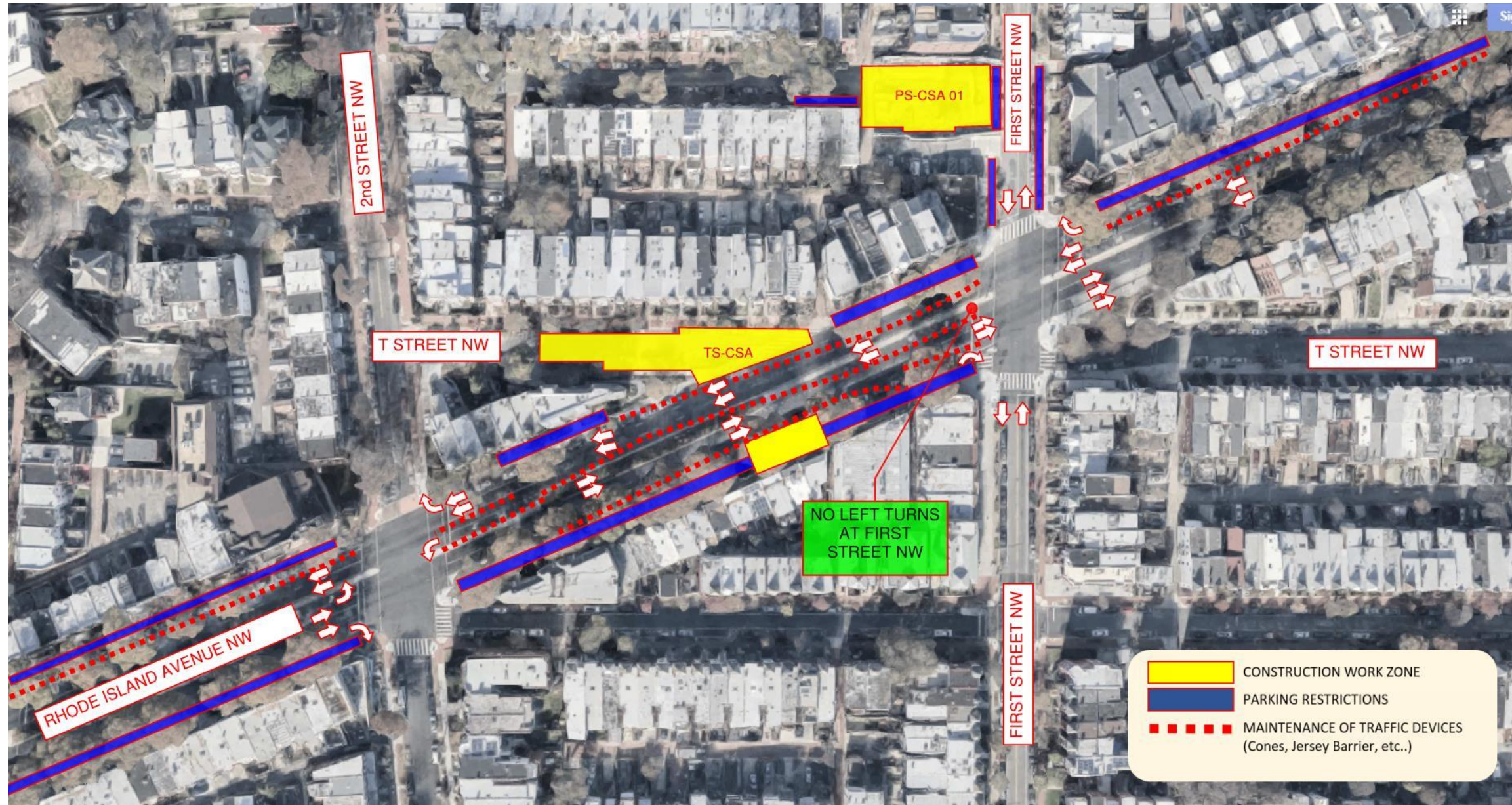
FIRST STREET NW CONSTRUCTION SITE – Travel Lanes

MAIN IMPACT: Rhode Island Avenue NW is reduced to two lanes in each direction between First Street NW and Florida Avenue NW. Parking restrictions are on each side of Rhode Island Avenue. First Street NW remains a one-way street.



Open First Street to Two-Way Traffic

Upcoming Traffic Pattern



FIRST STREET NW CONSTRUCTION SITE – Travel Lanes

MAIN IMPACT:

Rhode Island Avenue NW is reduced to two lanes in each direction between First Street NW and Florida Avenue NW. Parking restrictions are on each side of Rhode Island Avenue. First Street NW is a two-way street with no left turns from eastbound Rhode Island Avenue.



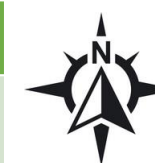
First Street Pumping Station Construction Site

Upcoming Pedestrian Detour



FIRST STREET NW CONSTRUCTION SITE – Pedestrian Detour

MAIN IMPACT: On Rhode Island Avenue NW the crosswalk is closed on the eastern half of the intersection at First Street. **Pedestrians, please follow the detour signs.**



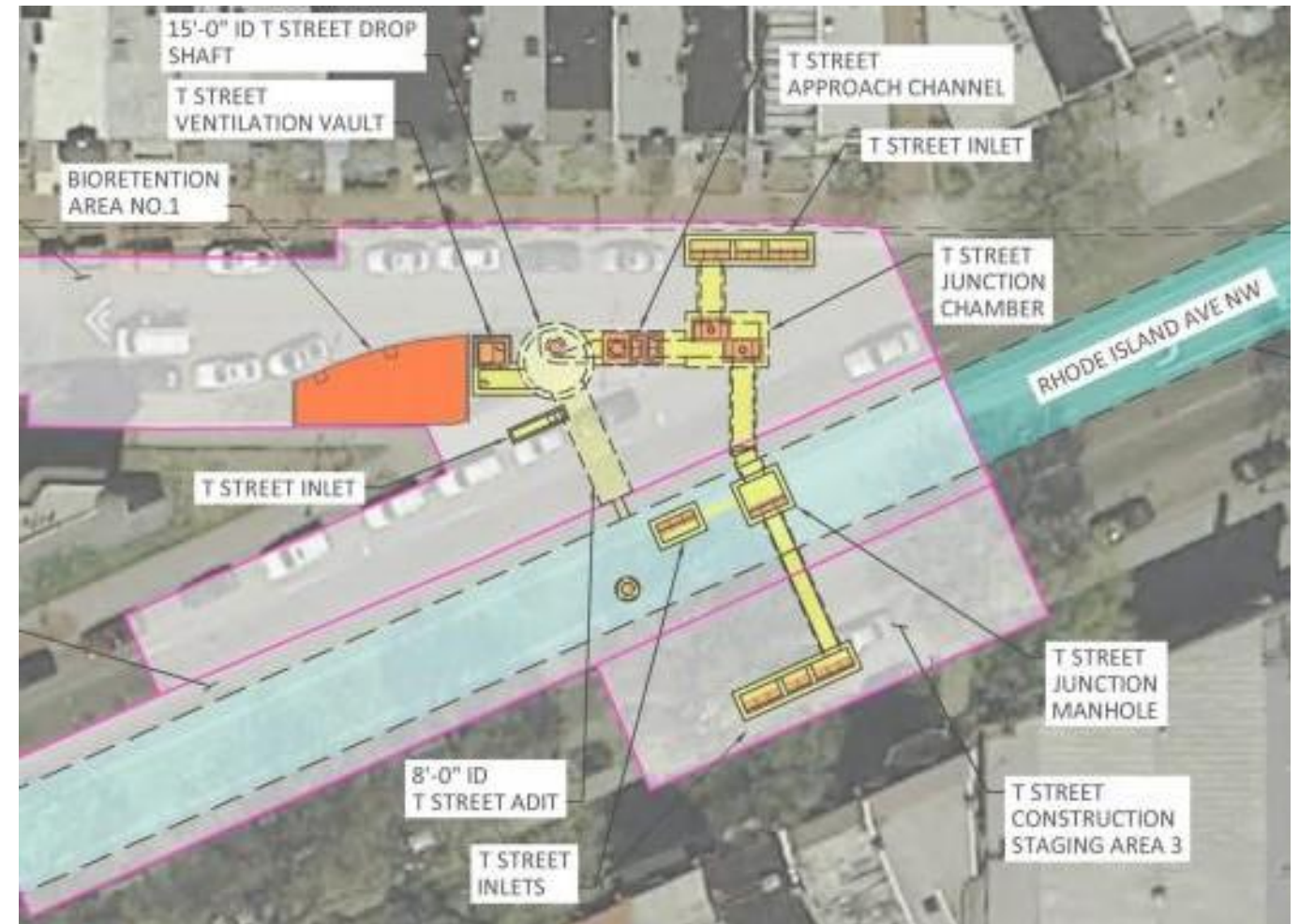
T Street NW Construction Site

Work Overview

Current Activity: Lining the interior of the drop shaft with concrete.

Next Activity: In May begin excavating the Near Surface Structures (NSS) including the approach channel, junction chamber, and storm drains (inlet) on T Street.

Later: Construction site be repositioned on the south side of Rhode Island Avenue NW for secant piles in February 2022.

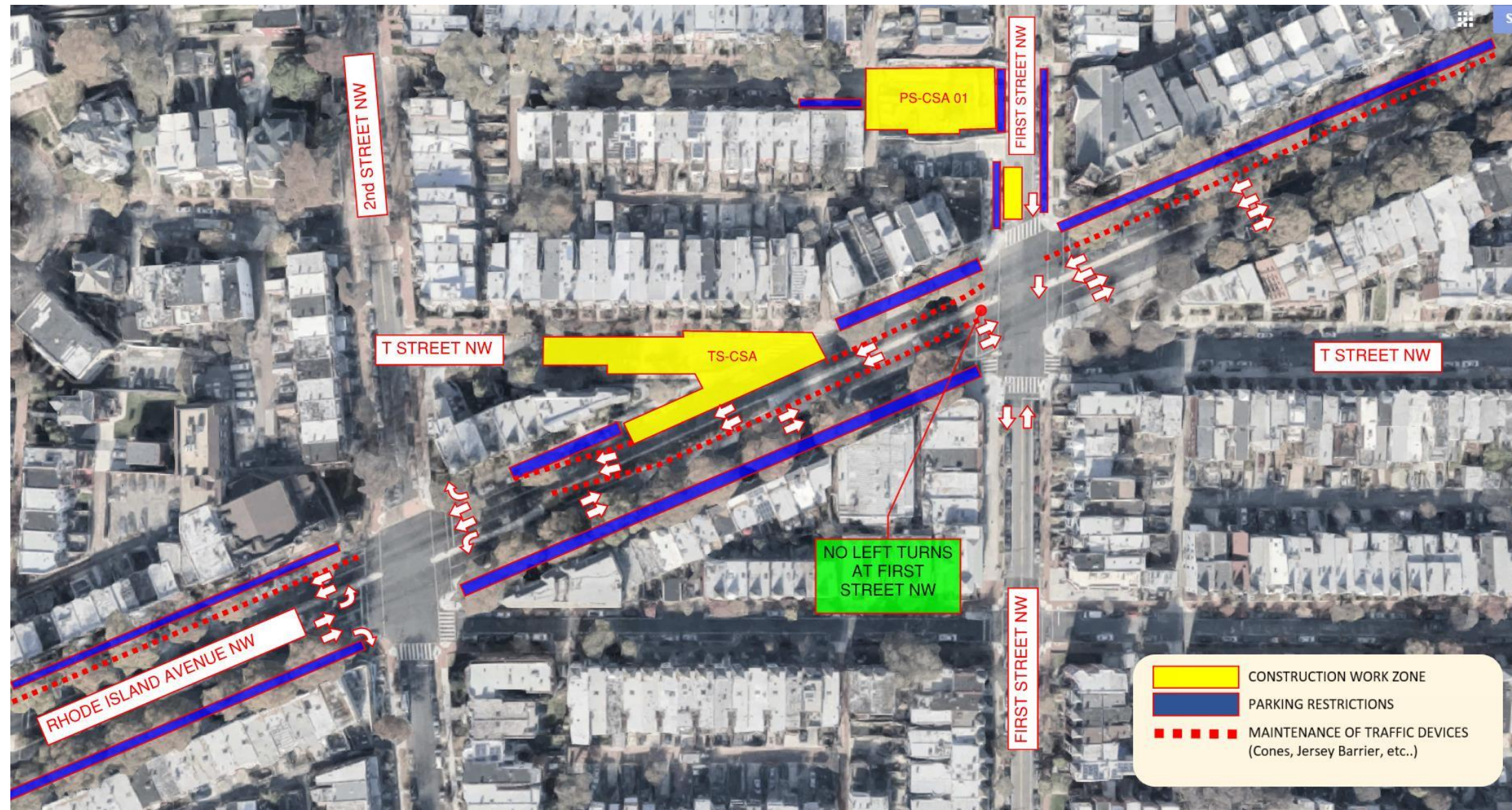


CONSTRUCTION WORK HOURS

Monday – Friday	7:00 AM to 7:00 PM
Saturday	7:00 AM to 5:00 PM
Construction End Date	Winter 2022

T Street NW Construction Site

Current Traffic Pattern



T STREET NW CONSTRUCTION SITE – Travel Lanes

MAIN IMPACT: Rhode Island Avenue NW is reduced to two lanes in each direction between First Street NW and Florida Avenue NW. Parking restrictions are on each side of Rhode Island Avenue.



T Street NW Construction Site

Pedestrian Detour



T STREET NW CONSTRUCTION SITE – Pedestrian Detour

MAIN IMPACT: At T Street NW the crosswalk is closed at the westbound side of Rhode Island Avenue NW. **Pedestrians, please follow the detour signs.**



Florida Avenue NW Construction Site Work Overview

Current Activity: Constructing the diversion chamber. Preparing the site for ground freeze activities.

Next Activity: Demobilize the construction area from the median of Rhode Island Avenue NW. Complete the installation (drilling) of the horizontal freeze pipes. Complete the lining of the shaft. Excavate the approach channel.



CONSTRUCTION WORK HOURS

Monday – Friday	7:00 AM to 7:00 PM
Construction End Date	Fall 2022

Florida Avenue NW Construction Site

Current Traffic Pattern



FLORIDA AVENUE NW CONSTRUCTION SITE – Travel Lanes

MAIN IMPACT:

Eastbound traffic flows around each side of the construction work area between 2nd and 4th Streets NW. Southbound traffic on the 1800-block of 3rd Street is limited to right turns only onto Rhode Island Avenue. Rhode Island Avenue NW is reduced to two lanes in each direction between First Street NW and Florida Avenue NW. Parking restrictions are on each side of Rhode Island Avenue.

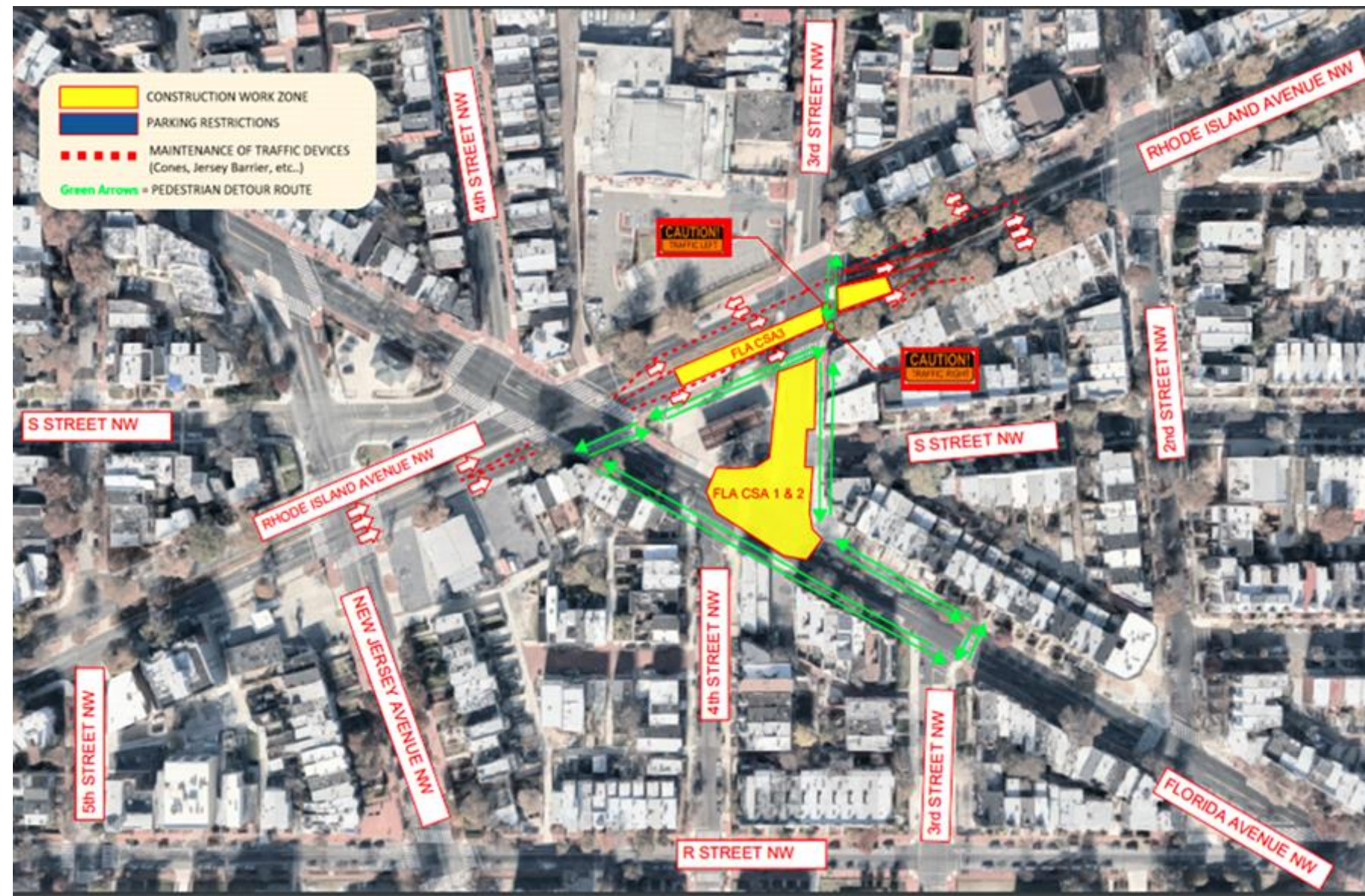


Florida Avenue NW Construction Site

Pedestrian Detour

Pedestrian Improvements

- Traffic signal moved for better visibility.
- Additional delineators and orange caution signs placed at the 3rd Street crosswalk.



FLORIDA AVENUE NW CONSTRUCTION SITE – Pedestrian Detour

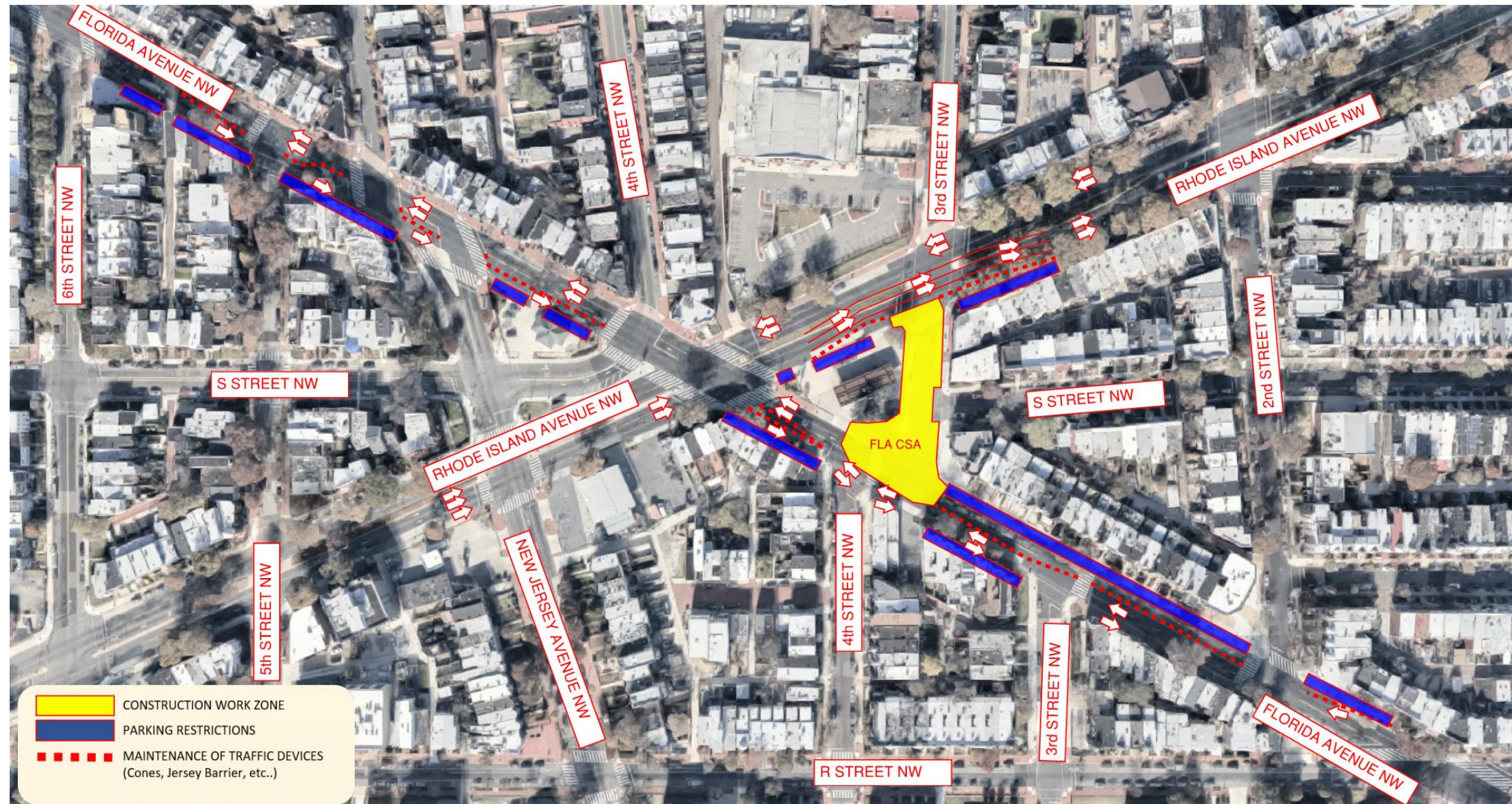
MAIN
IMPACT:

Crosswalk open at Rhode Island Avenue NW at 3rd Street NW. Crosswalk closed at Florida Avenue NW between 3rd Street and 4th Street. The Rhode Island Avenue crosswalk at 3rd street NW is open. **Pedestrians, please follow the detour signs.**



Florida Avenue NW Construction Site

Upcoming Traffic Pattern



FLORIDA AVENUE NW CONSTRUCTION SITE – Travel Lanes

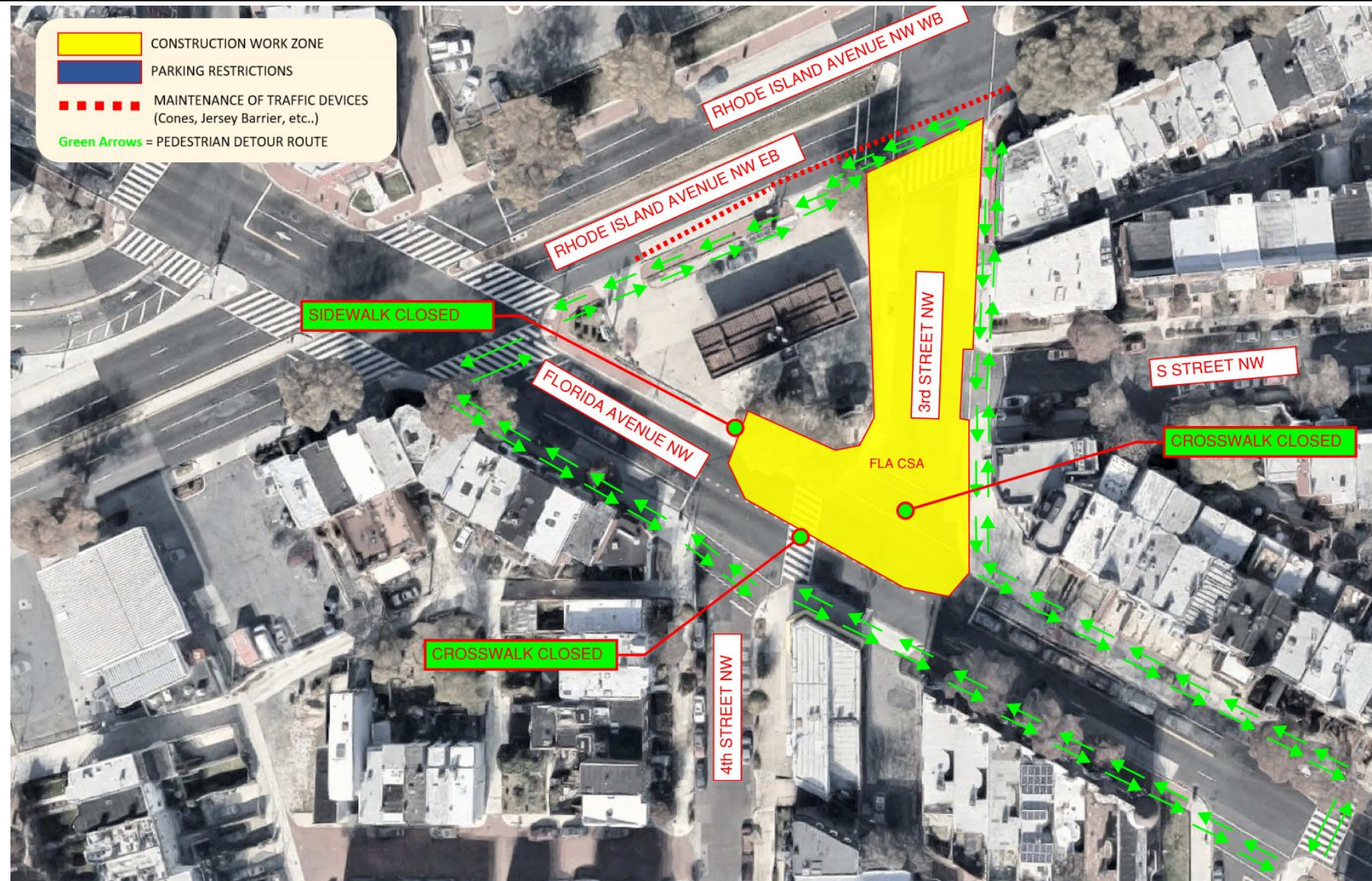
MAIN IMPACT:

Traffic will travel in two lanes eastbound on Rhode Island Avenue between New Jersey Avenue and North Capitol Street NW. Southbound traffic on the 1800-block of 3rd Street will be able to make right turns onto Rhode Island Avenue.



Florida Avenue NW Construction Site

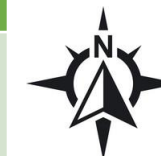
Pedestrian Detour



FLORIDA AVENUE NW CONSTRUCTION SITE – Pedestrian Detour

MAIN IMPACT:

East crosswalk open at Rhode Island Avenue NW at 3rd Street NW. Crosswalk closed at Florida Avenue NW between 3rd Street and 4th Street. **Pedestrians, please follow the detour signs.**



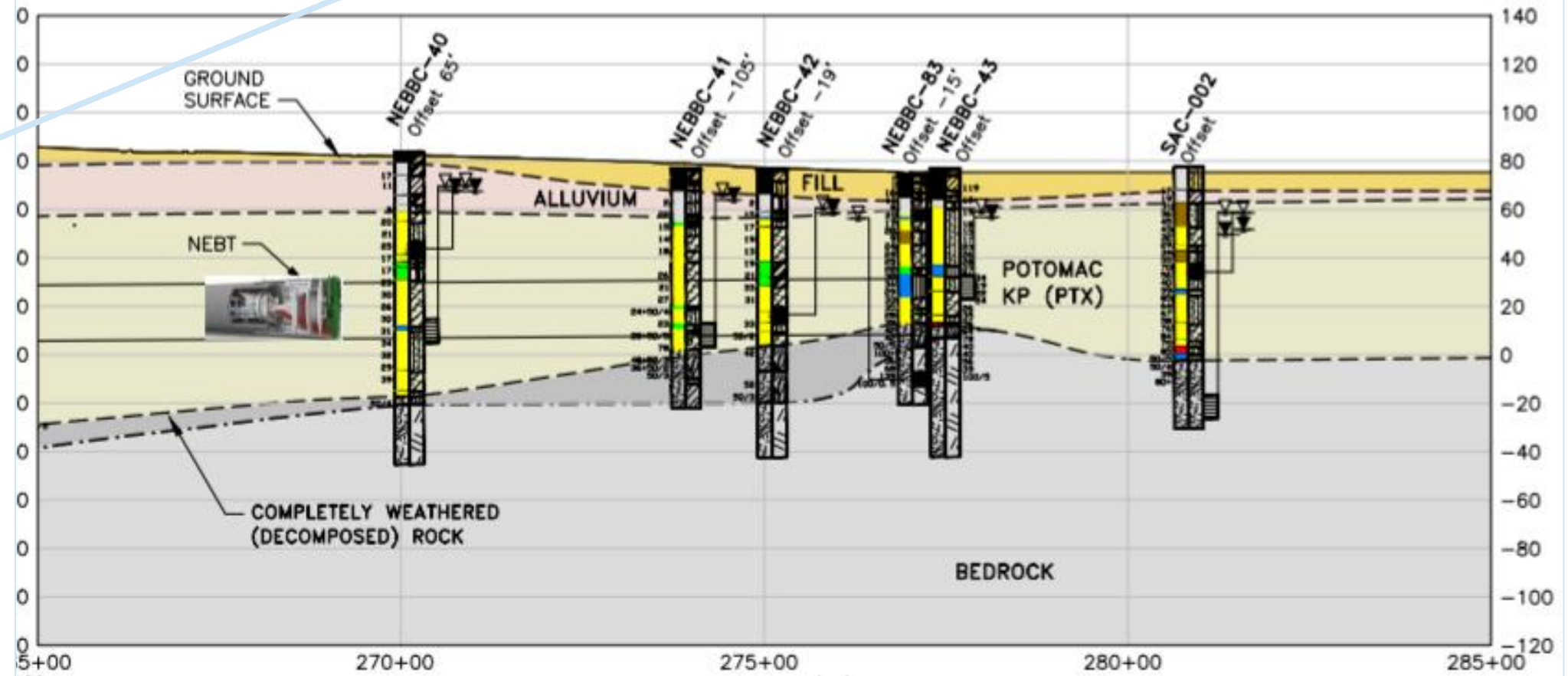
The TBM's Current Location

Bill Levy



PLAN

R Street NW Construction Site, the endpoint for the TBM which will arrive mid-April 2021.



R Street NW Construction Site

Work Overview

Current Activity: Prepping the site for the tunnel boring machine (TBM) breakthrough into the R Street drop shaft.

Next Activity: Excavate the diversion chamber. Disassemble the TBM and remove it from the tunnel.

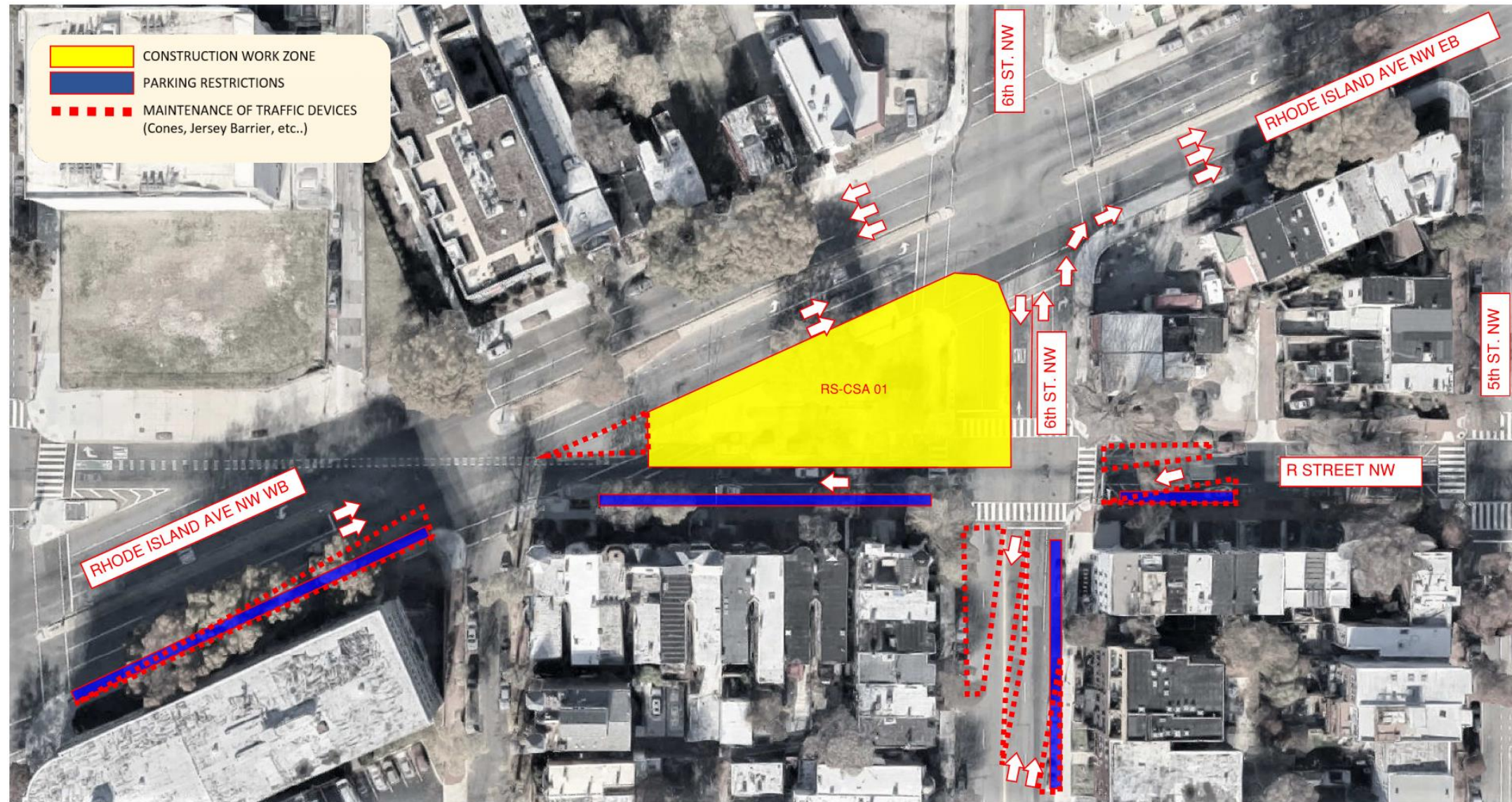
After coordination with DDOT, we will provide the upcoming approved short-term maintenance of traffic changes associated with removal of the TBM.



CONSTRUCTION WORK HOURS	
Monday – Friday	7:00 AM to 11:00 PM
Saturday	7:00 AM to 5:00 PM
Construction End Date	Winter 2022

R Street NW Construction Site

Current Traffic Pattern



The bike lane remains open through R Street NW.

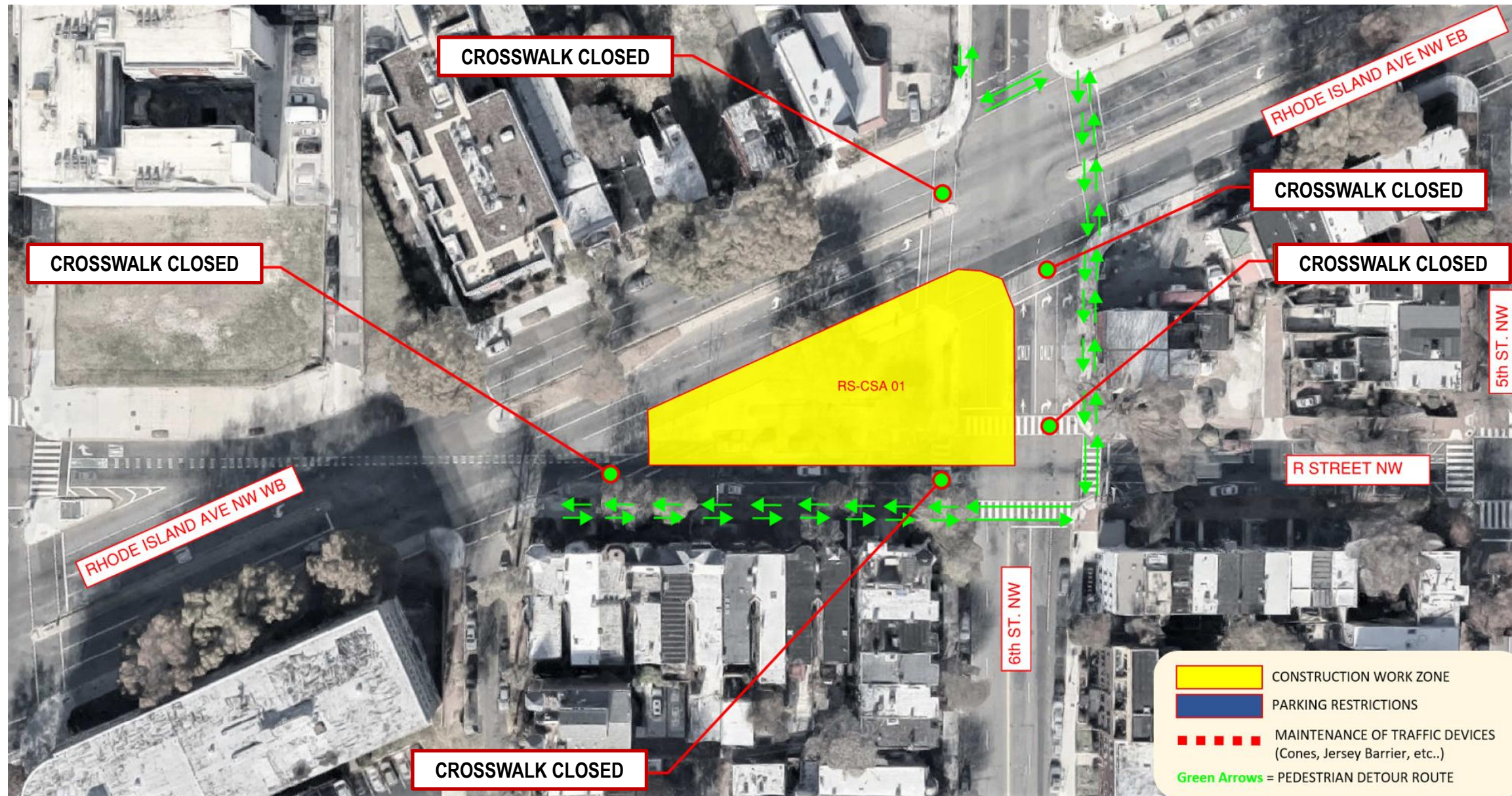
R STREET NW CONSTRUCTION SITE – Travel Lanes

MAIN IMPACT: Reduction and shifting of travel lanes on 6th Street and R Street. One lane closure on Rhode Island Ave NW eastbound.



R Street NW Construction Site

Pedestrian Detour



R STREET – Pedestrian Detour

MAIN IMPACT:

Crosswalk closed at Rhode Island Avenue NW and 6th Street NW intersections and on 6th Street and R Street NW intersection. **Pedestrians, please follow the detour signs.**



Alternative Parking Areas (APA)

Alan Etter



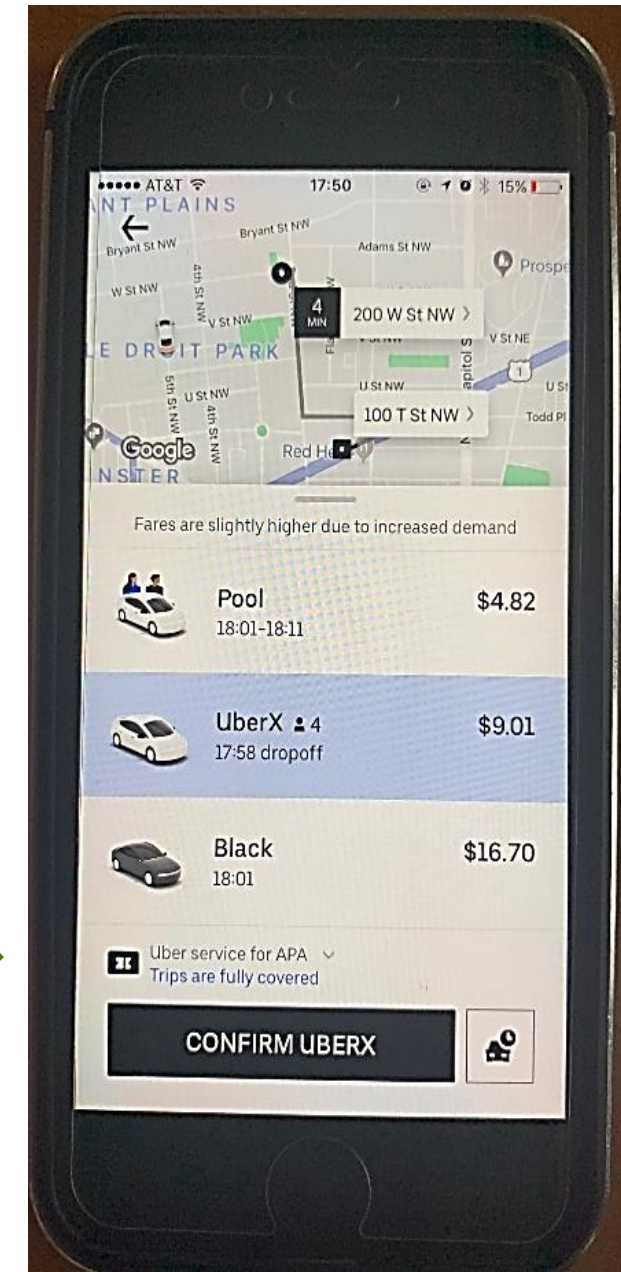
The **Bryant Street APA** is located at the intersection of Bryant Street and 2nd Street NW and is available to eligible residents.

The **LeDroit Park APA** is located on the 300 block of Elm St. NW.

To register for a parking pass at the APA, please send an email to dccleanrivers@dcwater.com or call the NEBT Hotline at (800) 988-6151.

How to Use the Uber Service for the Alternative Parking Areas

- Register for Bryant Street APA. (email: dccleanrivers@dcwater.com)
- You must have a smartphone with the Uber App installed.
- Check your email for a link. Click on the link, and the Uber App will be opened.
- Follow the instructions to download Uber Vouchers.
- When you are ready to ride, open the Uber App.
- Type in your destination.
- If you are within the geographically designated area, you will see a screen like this:



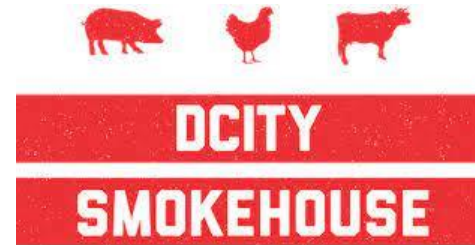
NEBT Claims Process (updated March 10, 2021)

Garry Brennan

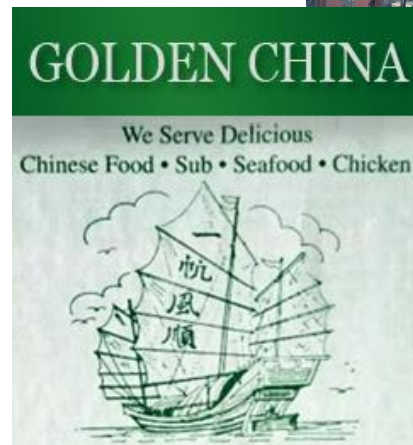
- If you are a property owner and you believe that construction activities undertaken as a result of this project have damaged your property in some way, you may send an email to esisconstructionclaims@tnwinc.com to initiate the claims process.
- ESIS, DC Water's insurance company, may initiate a site visit. Communications about the claim will occur between the property owner and DC Water's insurance company.
- The claim receives a claim number, and an adjuster investigates.
- It is recommended that when you see damage, report it.

We Support Our Local Businesses!

Bill Levy



TRUXTON INN



We Appreciate Our Workers!



- Staff Appreciation Lunch events with meals purchased from area restaurants – **142 meals served so far!**
- Encourage patronage of affected businesses

Main Street Contact Information

DC Water continues to partner with the Main Street organizations to work with businesses impacted by the Northeast Boundary Tunnel Project.



Alexander M. Padro, Executive Director

875 N Street NW
Washington, DC 20001

202-265-SHAW
info@shawmainstreets.org
shawmainstreets.org



Aisha Bond, Esq., Executive Director

Office Location:

22 Quincy Place, NW
Washington, D.C. 20001

Mailing Address:

P.O. Box 29068, Washington, D.C. 20002

202-409-6485
info@northcapitoldc.com
northcapitoldc.com

We will acknowledge questions from participants who are online and on the phone.



- **ONLINE PARTICIPANTS:** send your questions to the Host by using the Chat mode. You may also click on “Participants” to raise your hand for a question.
- **PHONE PARTICIPANTS:** press *9 to alert us that you want to ask a question. We will unmute you when it’s your turn to ask a question.

For more information, please contact
Email: dccleanrivers@dcwater.com
24/7 NEBT Hotline: (800) 988-6151
Northeast Boundary Tunnel Project Website:
dcwater.com/NEBT

