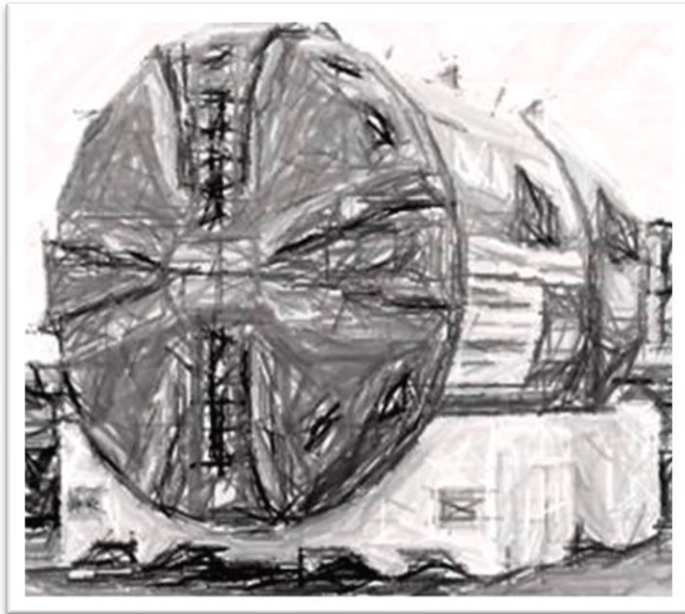


Northeast Boundary Tunnel Project Tunnel Forum

4th Street NE and Rhode Island Avenue NE Construction Sites



**Thursday, November 19, 2020
Zoom Meeting**

Welcome to the Tunnel Forum Virtual Meeting!



Participation Tips:

- Online meetings are subject to your bandwidth limitations. If your connection to the meeting should freeze, please exit and reenter the meeting to refresh your connection.
- Participants may opt to turn on or off your video.
- All participant lines are muted to minimize disruptions.
- The Questions and Answers period will be held at the end of the presentation. [Please hold your questions until the Q&A portion of the meeting.](#)
- During the Question and Answer period of the meeting, we will acknowledge questions from participants who are online and on phone.
- **ONLINE PARTICIPANTS:** send your questions to the Host by using the Chat mode. You may also click on “Participants” to raise your hand for a question.
- **PHONE PARTICIPANTS:** press *9 to alert us that you want to ask a question. We will unmute you when it’s your turn to ask a question.

Agenda

- **September 10th Flooding Event**
 - **Responses to July 2020 Tunnel Forum**
 - **4th Street NE Construction Site**
 - **Rhode Island Avenue NE Construction Site**
 - **NEBT Claims Process**
- **Rhode Island Avenue NE Main Street Partnership-Business**
 - **Questions and Answers**
 - **Contact Us**

We Want Everyone To Be Safe

Alan Etter

The city's response to Covid-19 focuses on social distancing and staying home. To see more on the city's response, go to coronavirus.dc.gov. For coronavirus testing in DC, call **1-855-363-0333**.



NEBT has taken the following actions to ensure the safety of employees:

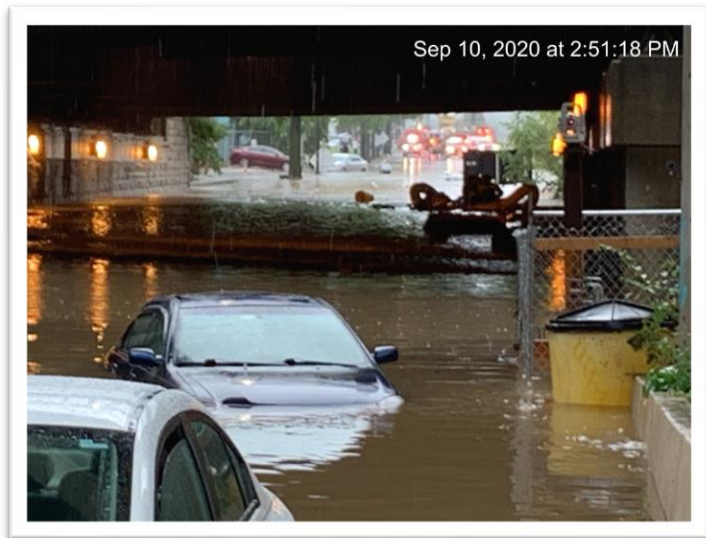
- Employees in the tunnel must undergo temperature screening at the start of their shift
- Masks and other personal protective equipment must be worn by all employees on site
- Employees maintain at least six feet of distance when possible whether on above or below ground operations
- All shared tools & equipment are regularly sanitized
- Please let us know how to make our engagement with you better

Outreach During Quarantine

Our team continues to engage the community through virtual meetings, email, door-to-door newsletter distribution (when necessary) and can be reached by email at dccleanrivers@dcwater.com and by calling the NEBT Hotline at 800-988-6151.

September 10th Flooding

Garry Brennan



View of flooding on Rhode
Island Avenue NE

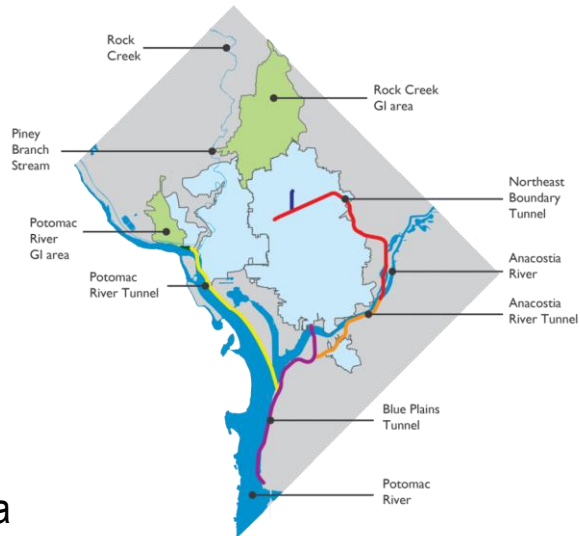
On September 10, heavy rains caused widespread flooding across the east coast, including the District, and many people experienced flooding.

- **Sewer infrastructure and deep tunnels functioned as designed.**
- **No underlying issue with construction or malfunction or error that contributed to flooding.**
- **Caused primarily by historically high rain fall – more than 2.2 inches in 75 minutes; flooding reported across the region.**
- **Record rainfall for September 10 recorded at Reagan National Airport.**
- **Short window from weather prediction to the storm event.**

DC Water Takes Added Steps to Protect Customers During Heavy Rains

DC Water is prepared when heavy rains are expected:

- Mechanics, electricians and instrumentation techs are on standby at sewer and stormwater pumping stations.
- A flatbed truck is loaded with hoses and pumps in case they need to be deployed.
- Catch basin cleaning crews work all day to clear clogged storm drains.
- Crews are ready to respond at a moment's notice to any flooding at pump stations.



DC Water has taken many steps to manage stormwater and mitigate flooding, most notably with the award-winning Clean Rivers Project.

As part of that program, large underground tunnels divert sewage and stormwater overflows away from streets, homes or waterways like the Anacostia River and instead pump it to Blue Plains Treatment plant.

Completed:

- Blue Plains Tunnel
- Anacostia River Tunnel
- First Street Tunnel

Constructing:

- Northeast Boundary Tunnel

Anacostia River Tunnel: Benefits



4,600

tons of trash, solids,
and debris removed

Anacostia River Tunnel from Blue Plains to
RFK Stadium placed in operation on
March 20, 2018

- 7 miles of 23' diameter tunnel
- More than 100 million gallons of storage

9.2 billion gallons of
CSO captured since
the tunnel was
placed in operation



Northeast Boundary Tunnel Project: Overview



LEGEND

- NORTHEAST BOUNDARY TUNNEL (PROPOSED; 2023)
- FIRST STREET TUNNEL (2016)
- M WMATA METRO STATION
- CONSTRUCTION STAGING AREA (CSA)
- PROPOSED STRUCTURE LOCATIONS
- CHRONIC FLOODING AREAS

8 & 9 CHANNING STREET MINING SHAFT AND MICHIGAN AVENUE SITE



11 R STREET DIVERSION AND VENTILATION CONTROL FACILITY



10 FLORIDA AVENUE DIVERSION FACILITY



4 RHODE ISLAND AVENUE DIVERSION FACILITY



5 4TH STREET DIVERSION FACILITY



6 & 7 T STREET DIVERSION FACILITY AND PUMPING STATION



3 W STREET SITE



2 MT OLIVET DIVERSION AND VENTILATION CONTROL FACILITY

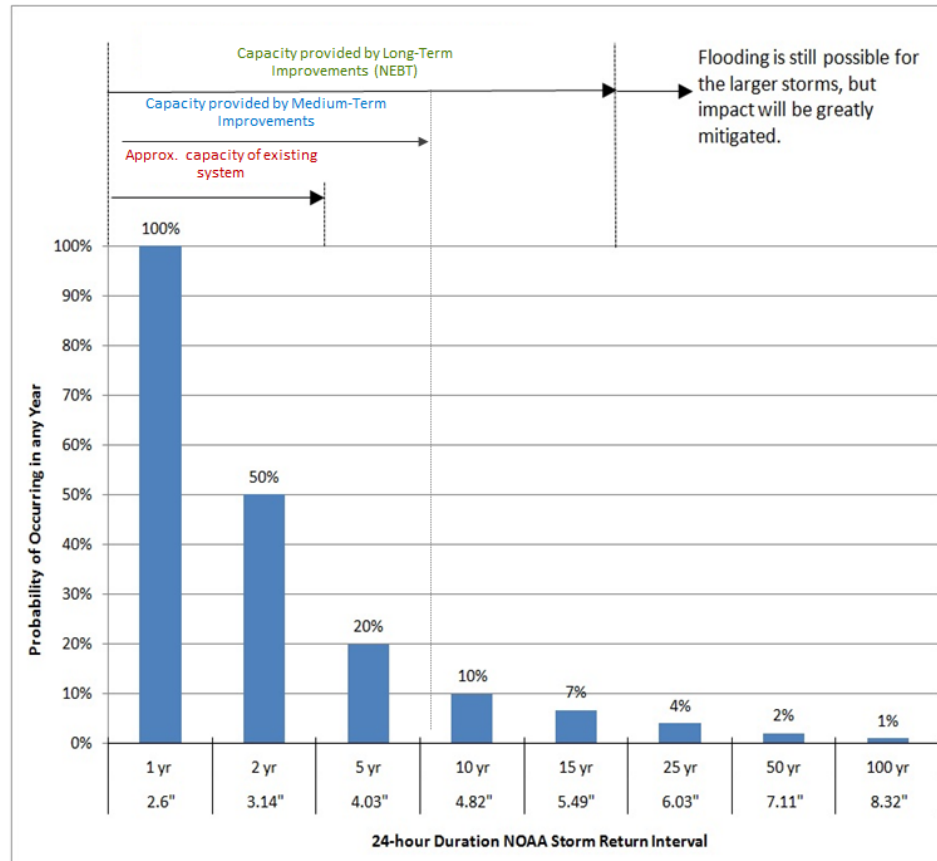


1 CSO 019 SITE



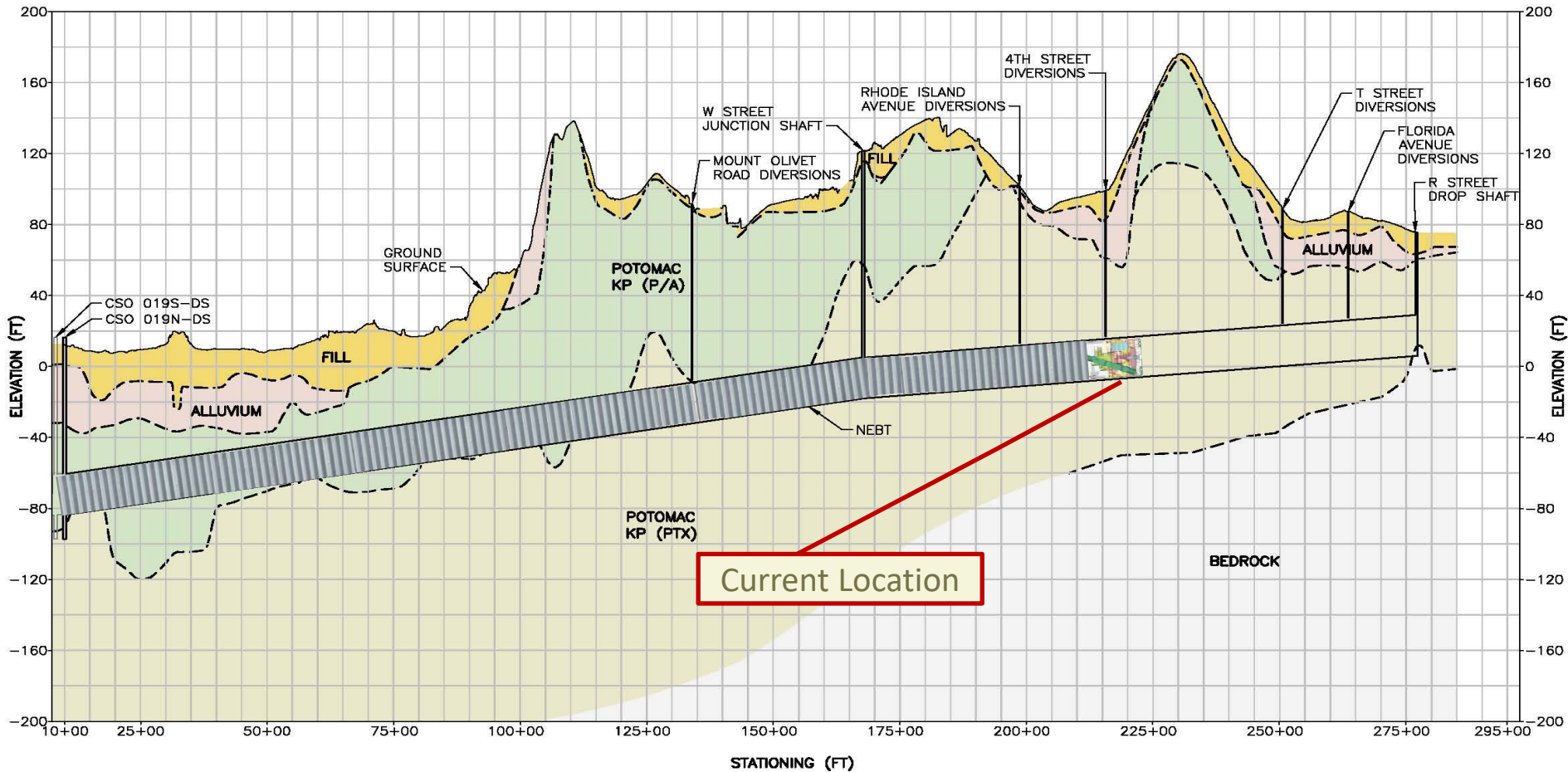
Northeast Boundary Tunnel Project: Benefits

- Reduce the frequency and magnitude of flooding
- Reduce the discharge of untreated wastewater into the Anacostia River and improve water quality
- Reduce risks to human health



- Significantly mitigate the frequency, magnitude and duration of sewer flooding and basement backups in the Northeast Boundary drainage area
- Control combined sewer overflow (CSO) discharges to the Anacostia River, significantly improving water quality
- Prevent deterioration of historic resources from water damage caused by flooding

Where is Chris the Tunnel Boring Machine (TBM)?



Chris the TBM is moving past the 4th Street NE Construction Site.

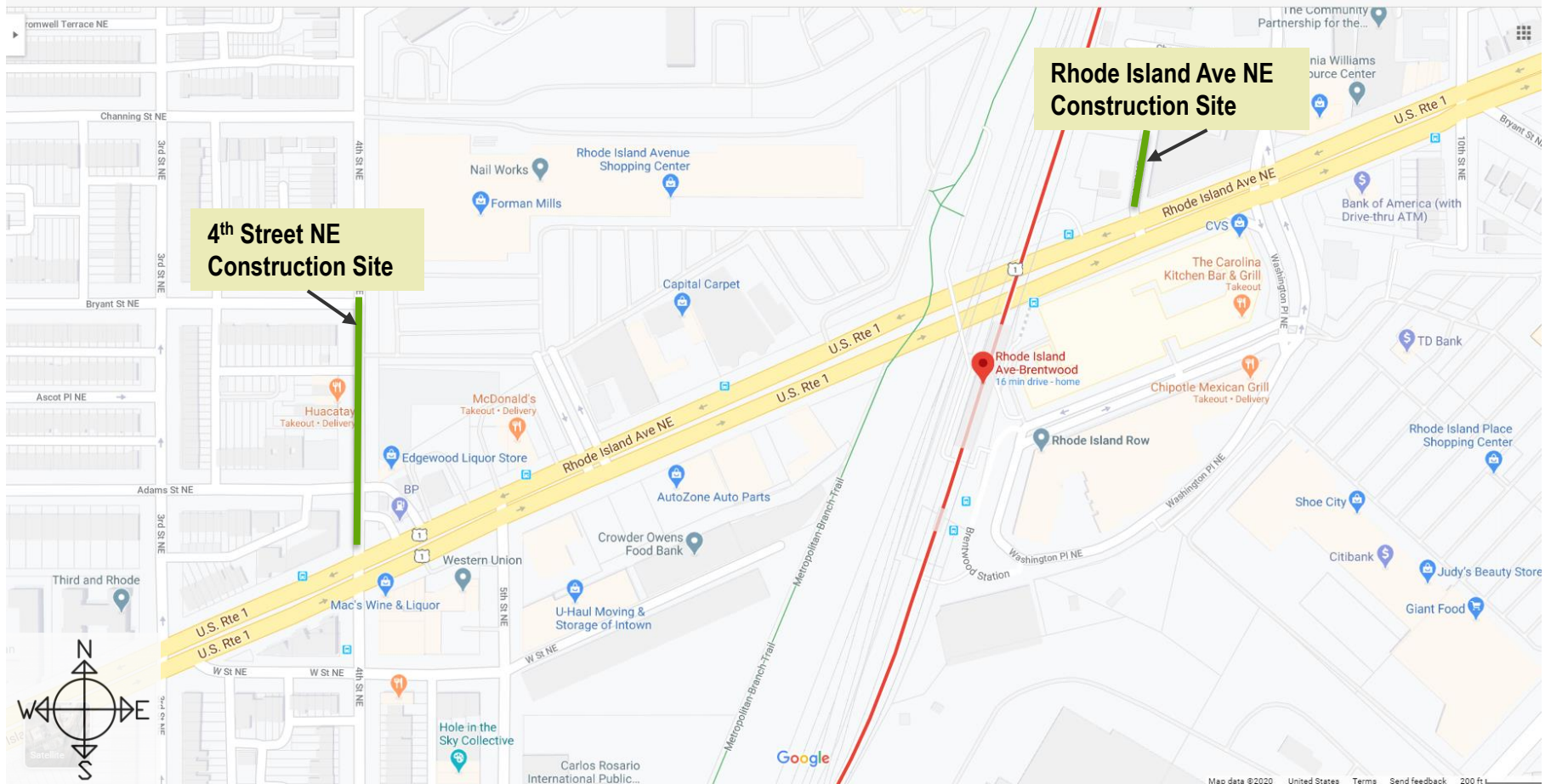
Responses to Community Concerns

Hadiah Jordan

CONCERN	RESPONSE
Proprietor of Edgewood Liquor Store asked that the light in front of his store be repaired.	The light was checked and repaired the next morning.
Hauling dump trucks have been seen using Bryant Street NE (300 block). Causing safety issues, noise and vibrations.	<ul style="list-style-type: none">▪ Bryant Street NE is not an NEBT route. Videotaped trucks on Bryant St to review if they were related to the project.▪ Reinstalled a No Thru Trucks sign on Bryant St at Lincoln Rd.
When will parking on RIA open back up?	There are no parking restrictions related to NEBT on the east bound side of RIA.

Construction Site Updates

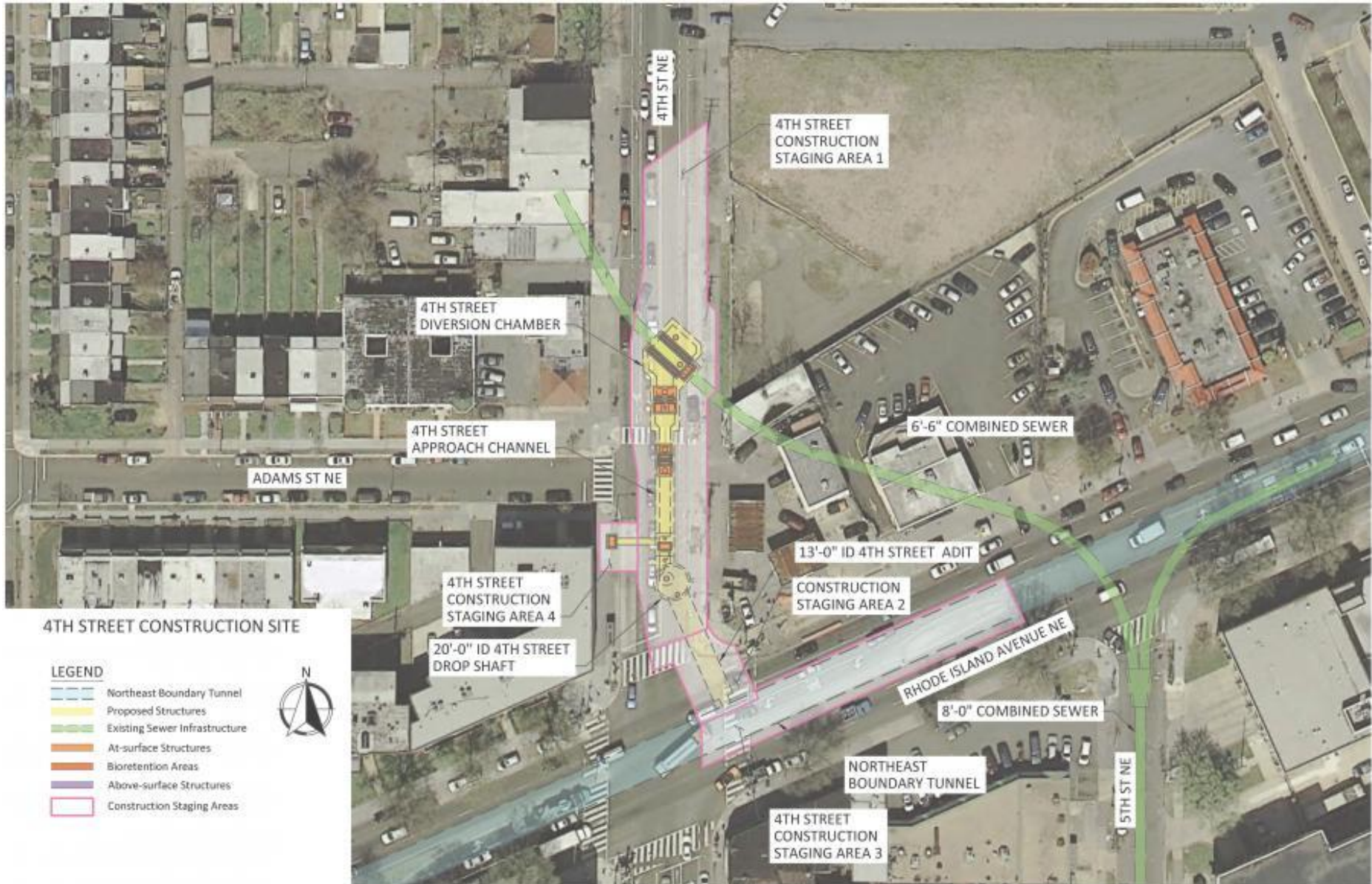
Andrea Sesenna and Matt Wolniak



The green line = the Construction Site locations.

4th Street NE Construction Site Map

Andrea Sesenna



4th Street NE Construction Site

Andrea Sesenna



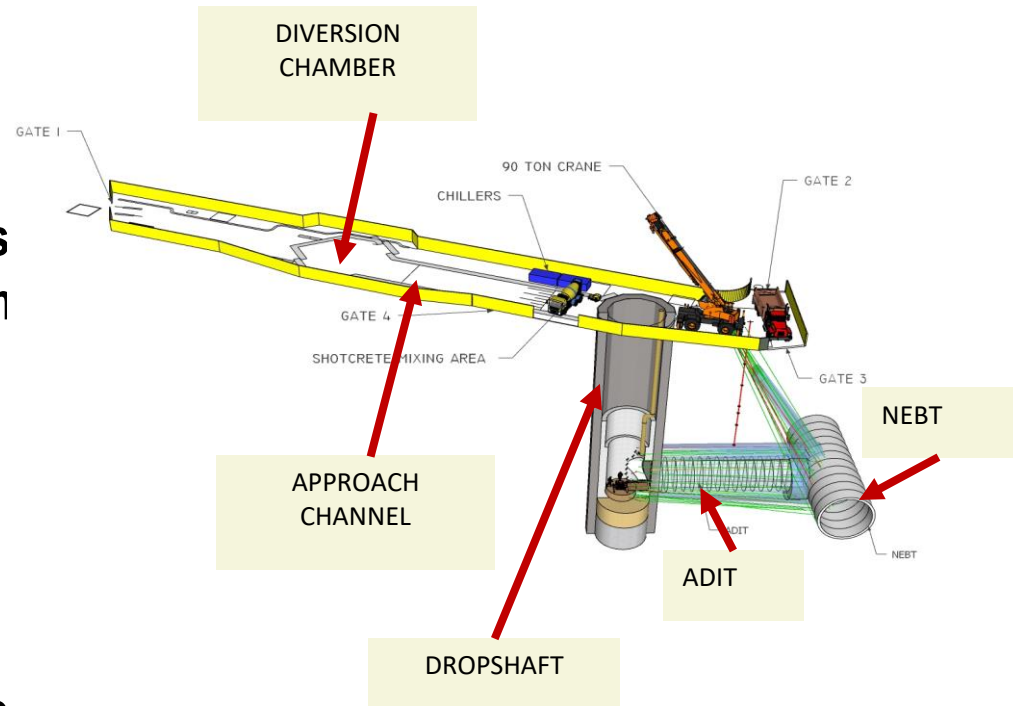
CONSTRUCTION WORK HOURS

Monday – Friday	7:00 AM to 3:00 AM
Saturday	7:00 AM to 5:00 PM
Construction End Date	Summer 2021

What's Completed at the 4th Street Site

Andrea Sesenna

- The Drop Shaft liner is partially complete.
- The soil freeze system continues operating. The soil freeze system hardens the ground to support adit work.
- The Adit concrete liner is partially complete. The adit is a small tunnel.
- The Diversion Chamber concrete walls are partially completed.



Map of the diversion facility at the 4th Street NE Construction Site

Construction Activity at the 4th Street Site

Andrea Sesenna

- **Installing the concrete liner in the Adit.**
 - Hours: 7:00 am to 3:00 am; Monday to Saturday.
 - Duration: now through the end of December 2020
- **Installing the concrete walls for the Diversion Chamber.**
 - Hours: 7:00 am to 3:00 pm, Monday to Friday
- **Installing a 5 ft diameter pipe to connect the Approach Channel to the ventilation vault using trenchless technology.**
 - Hours: 7:00 am to 7:00 pm; Monday to Friday.
 - Duration: 1 month to complete



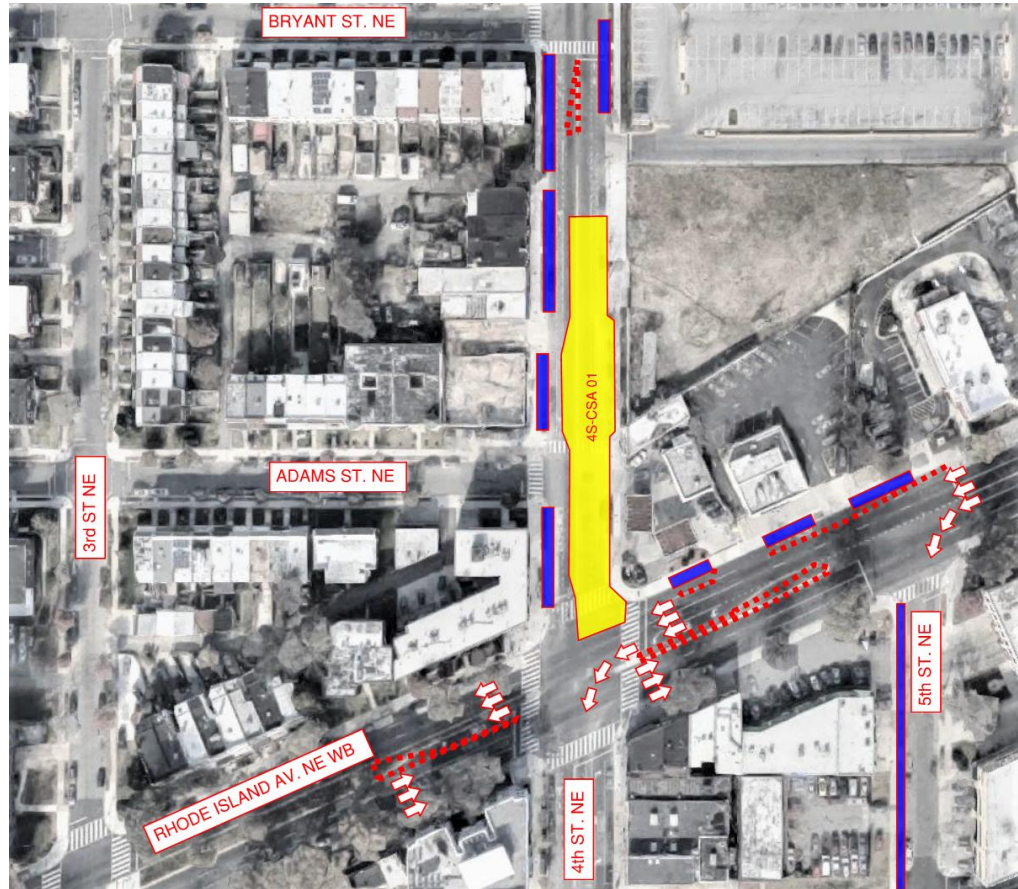
View of formwork for the diversion chamber and the temporary flume.



Lining the adit

4th Street NE Construction Site: Traffic Pattern

Matt Wolniak



4TH STREET NE CONSTRUCTION SITE

TRAFFIC PATTERN:

The traffic pattern will change in 2021.

MAIN IMPACT:

4th Street NE closed to northbound traffic between Rhode Island Avenue NE and Bryant Street NE.

4th Street NE Construction Site: Pedestrian Detour

Matt Wolniak



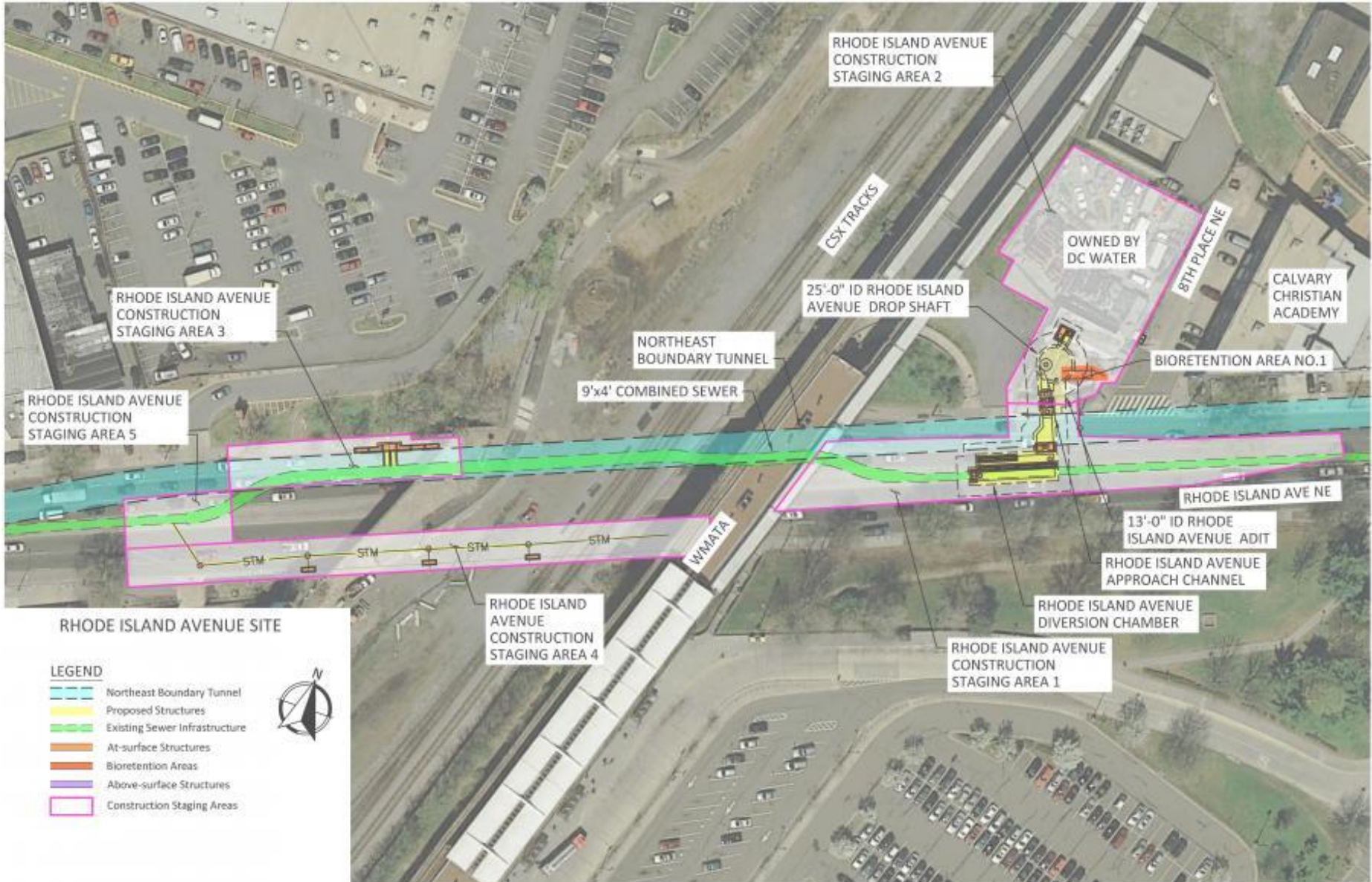
- CONSTRUCTION WORK ZONE
- PARKING RESTRICTIONS
- MAINTENANCE OF TRAFFIC DEVICES (Cones, Jersey Barrier, etc..)
- Green Arrows = PEDESTRIAN DETOUR ROUTE

4TH STREET NE CONSTRUCTION SITE – Pedestrian Detour

PEDESTRIAN DETOUR:	The pedestrian detour will continue into 2021.
MAIN IMPACT:	Pedestrian path provided around the construction site.

Rhode Island Avenue NE Construction Site Map

Andrea Sesenna



Rhode Island Avenue NE Construction Site

Andrea Sesenna



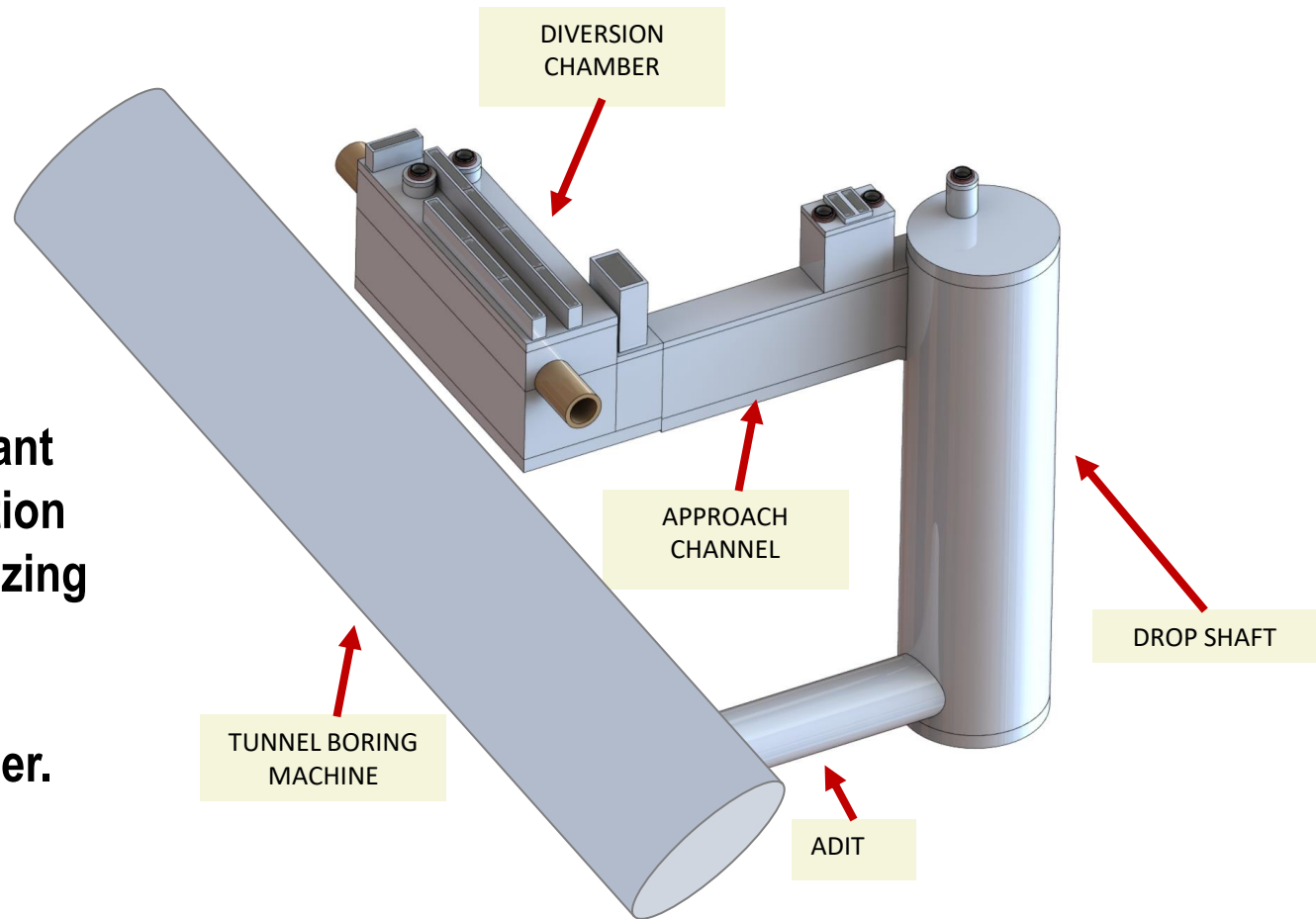
CONSTRUCTION WORK HOURS

Monday - Friday	7:00 AM to 7:00 PM
Saturday (occasionally)	7:00 AM to 5:00 PM
Construction End Date	Fall 2022

What's Completed at the Rhode Island Ave NE Site

Andrea Sesenna

- Installed 130 secant piles, a construction activity for stabilizing the ground for excavating the Diversion Chamber.



Map of the diversion facility at the Rhode Island Ave NE Construction Site

Construction Activity at the Rhode Island Ave NE Site

Andrea Sesenna

- **Excavating the Drop Shaft which is approximately 110 ft deep with an inside diameter of 25 ft.**
 - **Duration: until end of December 2020**
- **Jet grouting for excavation of the Approach Channel and Diversion Chamber.**
 - **Duration: until end of January 2021**



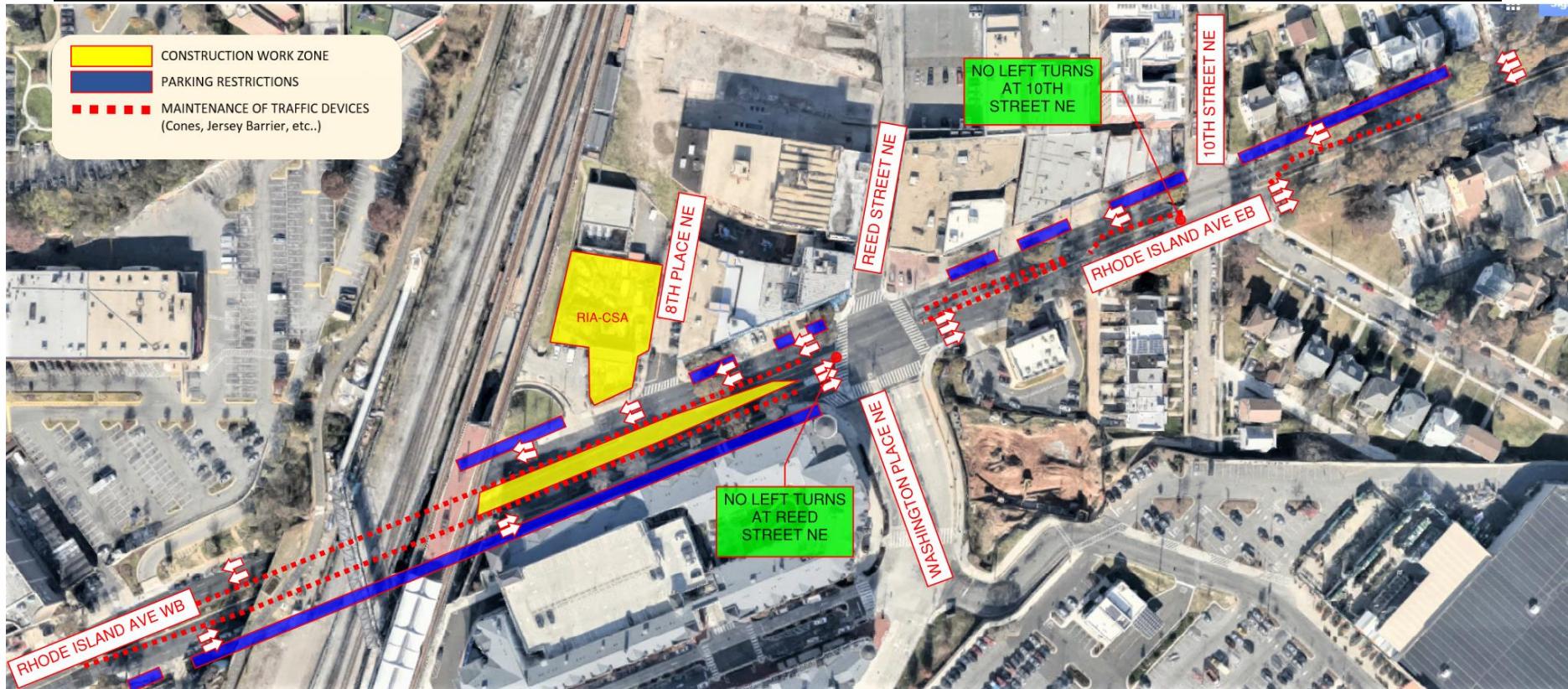
Excavating the drop shaft



Excavating the muck pit for jet grout work in the Rhode Island Avenue NE median area

Rhode Island Ave NE Construction Site: Traffic Pattern

Matt Wolniak



RHODE ISLAND AVENUE NE CONSTRUCTION SITE

TRAFFIC PATTERN:

The traffic pattern on Rhode Island Avenue NE.

MAIN IMPACT:

Two lanes in each direction on Rhode Island Avenue NE routed to go around the construction area in middle lanes. **No left turns permitted from eastbound Rhode Island Ave to Reed Street and 10th Street.**

NEBT Claims Process

Alan Etter

- **If you are a property owner and you believe that construction activities undertaken as a result of this project have damaged your property in some way, you may call the 24/7 NEBT Hotline – (800) 988-6151 – to initiate the claims process. Leave a message stating that you would like to submit a claim and include your name and contact information.**
- **A member of the contractor team will visit your property and confirm the details but will not make a claim determination.**
- **The contractor has insurance and may initiate a site visit. The claim will be reported to the insurance company and further communications will occur between the property owner and the contractor’s insurance company.**
- **The claim receives a claim number and an adjuster investigates.**
- **It is recommended that when you see damage, report it.**

Rhode Island Avenue NE Main Street

Bill Levy



Kyle Todd, Executive Director

Office Location

2300 Rhode Island Avenue NE,
Suite 202

kyle@riamainstreet.org

202-808-9050

riamainstreet.org





"QUACK QUACK"

NEBT's Wildlife Effect

The Northeast Boundary Tunnel will complete a system that reduces combined sewer overflows to the Anacostia River by 98% in an average year.

A cleaner river supports the abundant wildlife; **522** species of birds, fish, amphibians, insects, and plants.



DCWATER.COM/NEBT



@CHRIS_TBM

Follow Chris the TBM on Twitter:
[@Chris TBM](https://twitter.com/Chris_TBM)



To receive email updates about NEBT construction, send an email to dccleanrivers@dcwater.com.

For More Info

- **24/7 NEBT Hotline:** (800) 988-6151
- **Email:** dccleanrivers@dcwater.com
- **Project Webpage:** dcwater.com/NEBT

We will acknowledge questions from participants who are online and on the phone.



- **ONLINE PARTICIPANTS:** send your questions to the Host by using the Chat mode. You may also click on “Participants” to raise your hand for a question.
- **PHONE PARTICIPANTS:** press *9 to alert us that you want to ask a question. We will unmute you when it’s your turn to ask a question.