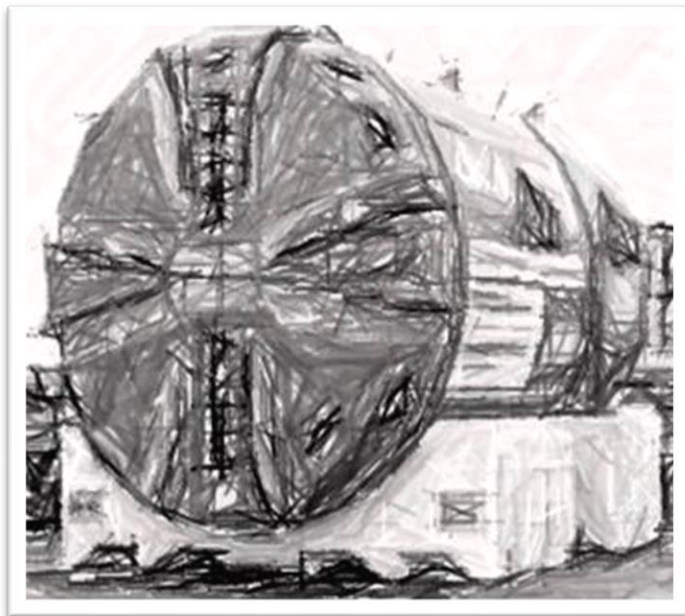


Northeast Boundary Tunnel Project Tunnel Forum



**Thursday, July 16, 2020
Zoom Meeting**

Welcome to the Tunnel Forum Virtual Meeting!



Participation Tips:

- Online meetings are subject to your bandwidth limitations. If your connection to the meeting should freeze, please exit and reenter the meeting to refresh your connection.
- Participants may opt to turn on or off your video.
- All participant lines are muted to minimize disruptions.
- The Questions and Answers period will be held at the end of the presentation. [Please hold your questions until the Q&A portion of the meeting.](#)
- During the Question and Answer period of the meeting, we will acknowledge questions from participants who are online and on phone.
- **ONLINE PARTICIPANTS:** send your questions to the Host by using the Chat mode. You may also click on “Participants” to raise your hand for a question.
- **PHONE PARTICIPANTS:** press *9 to alert us that you want to ask a question. We will unmute you when it’s your turn to ask a question.

Agenda

- **NEBT Overview and Benefits**
- **4th Street NE Construction Site**
 - **What's Completed**
 - **What's Next**
- **Rhode Island Avenue NE Construction Site**
 - **What's Completed**
 - **What's Next**
- **Rhode Island Avenue NE Main Street Partnership-Business**
- **Questions and Answers**
- **Contact Us**

We Want Everyone To Be Safe

Alan Etter

The city's response to Covid-19 focuses on social distancing and staying home. To see more on the city's response, go to coronavirus.dc.gov. For coronavirus testing in DC, call **1-855-363-0333**.



NEBT has taken the following actions to ensure the safety of employees:

- Employees in the tunnel must undergo temperature screening at the start of their shift
- Masks and other personal protective equipment must be worn by all employees on site
- Employees maintain at least six feet of distance when possible whether on above or below ground operations
- All shared tools & equipment are regularly sanitized
- Please let us know how to make our engagement with you better

Outreach During Quarantine

Our team continues to engage the community through virtual meetings, email, door-to-door newsletter distribution (when necessary) and can be reached by email at dccleanrivers@dcwater.com and by calling the NEBT Hotline at 800-988-6151.

Northeast Boundary Tunnel Project: Overview

Hadijah Jordan



- Reduce flooding and basement backups in the Northeast Boundary drainage area
- Reduce the discharge of untreated wastewater into the Anacostia River and improve water quality
- Reduce risks to human health

Anacostia River Tunnel: Benefits

Hadiyah Jordan



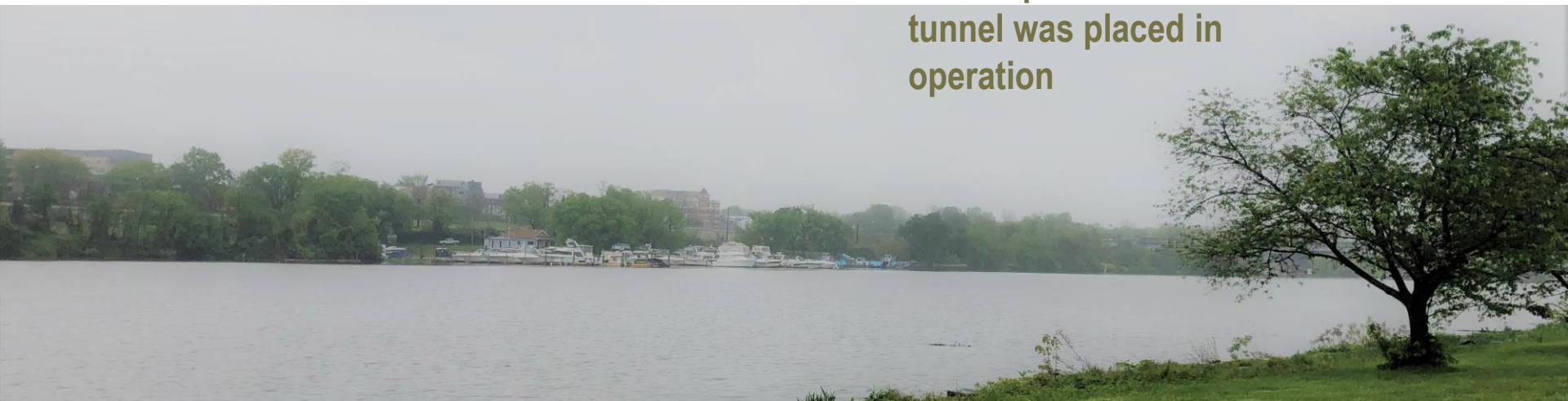
3,800

tons of trash, solids,
and debris removed

Anacostia River Tunnel from Blue Plains to
RFK Stadium placed in operation on
March 20, 2018

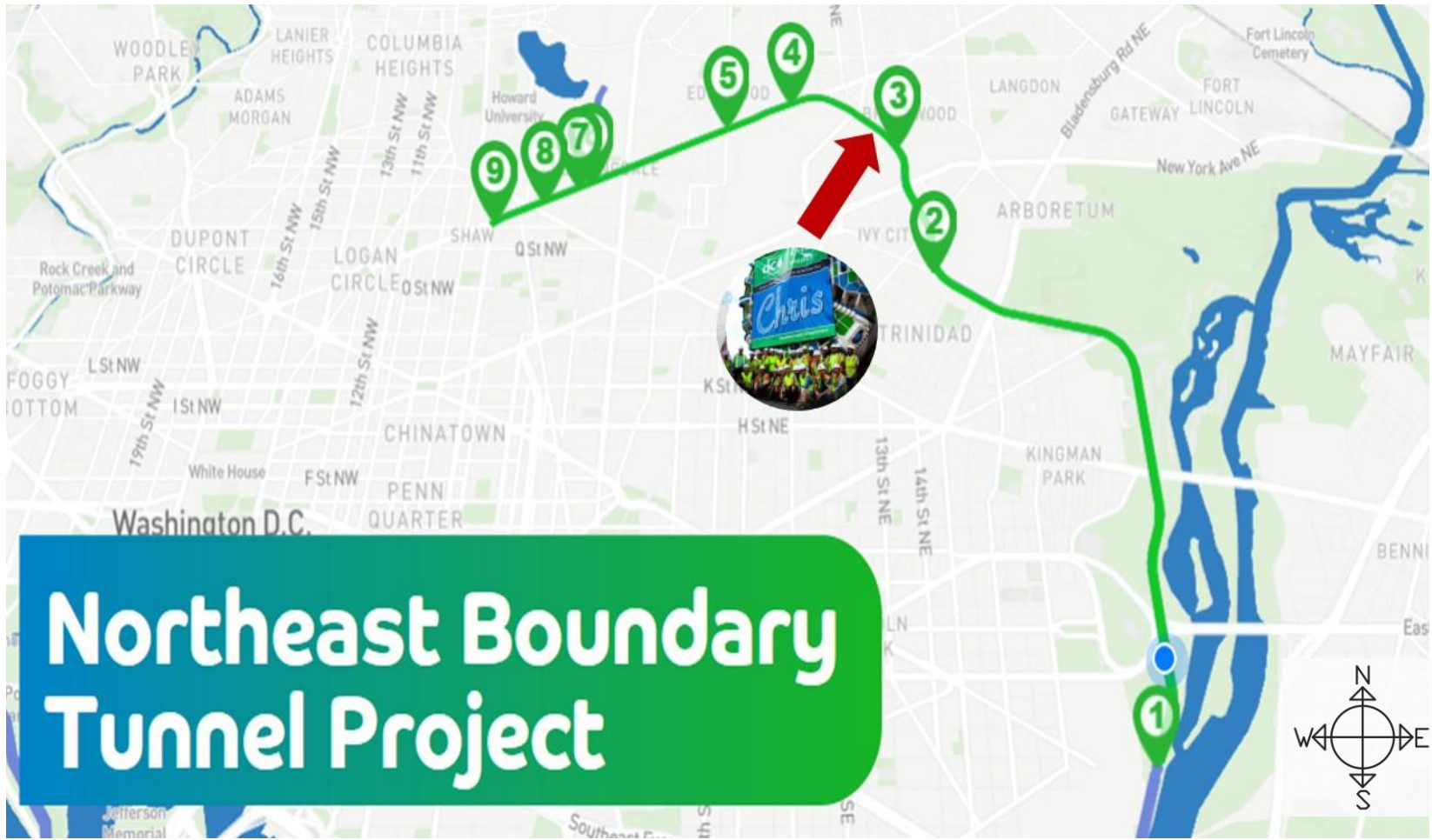
- 7 miles of 23' diameter tunnel
- More than 100 million gallons of storage

7.9 billion gallons of
CSO captured since
tunnel was placed in
operation



Where is Chris the TBM Now?

Hadiyah Jordan



TBM = Tunnel Boring Machine

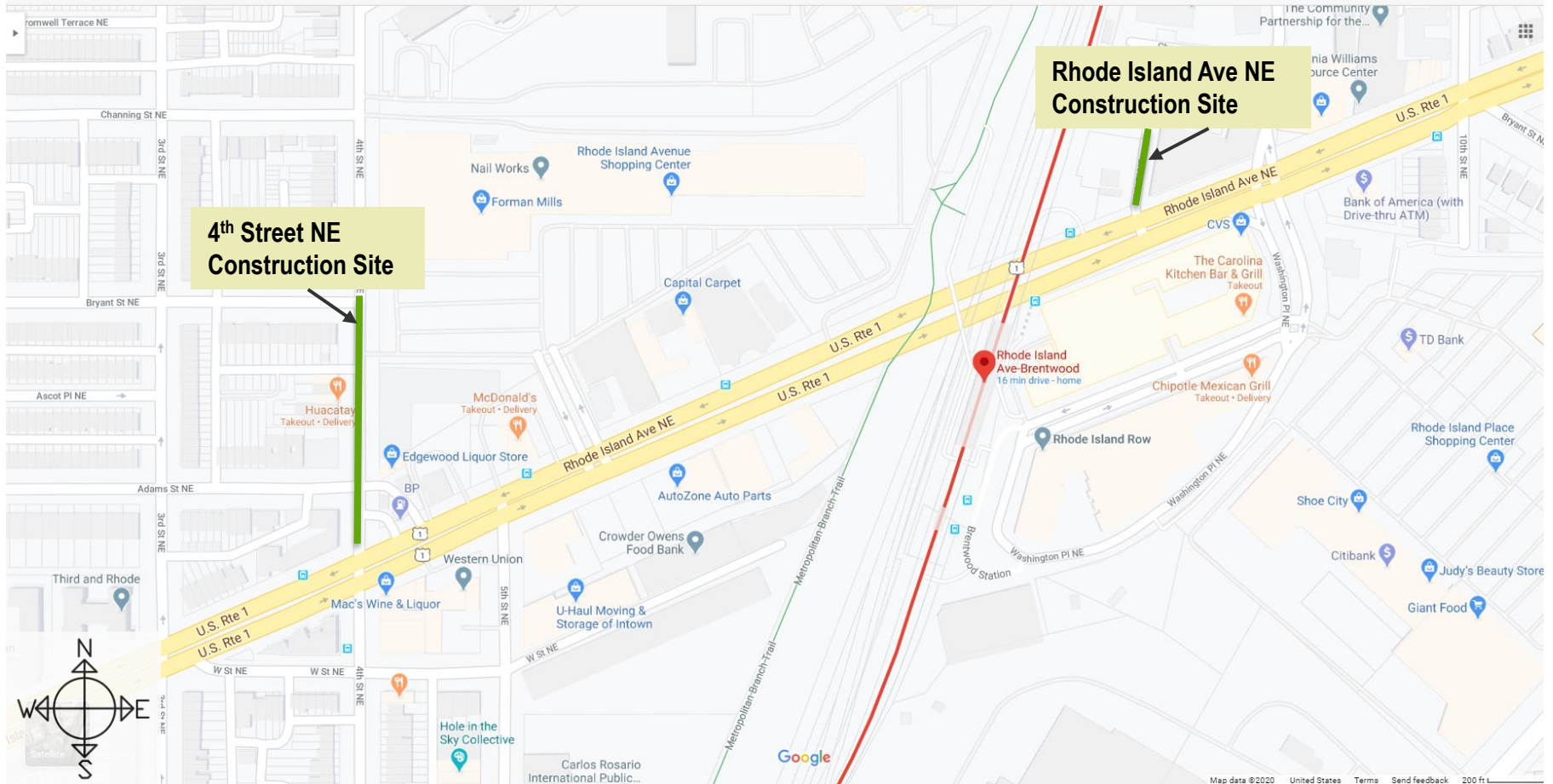
Responses to Community Concerns

Hadiyah Jordan

CONCERN	RESPONSE
What criteria and level of noise will be used at the 4 th Street NE Construction Site? How do we access the public records for the noise data?	The noise level is based on building and extended hours permits. Lower levels at night are 64-65 decibels. We are reviewing how the data can be released to public. 24/7 noise data is checked every day. We have a 24/7 meter on the light post of Adams & 4th Streets NE.
What standard of decibels does the project use?	The standard for decibels is based on DC regulations.

Construction Site Updates

Shane Yanagisawa



**4th Street NE
Construction Site**

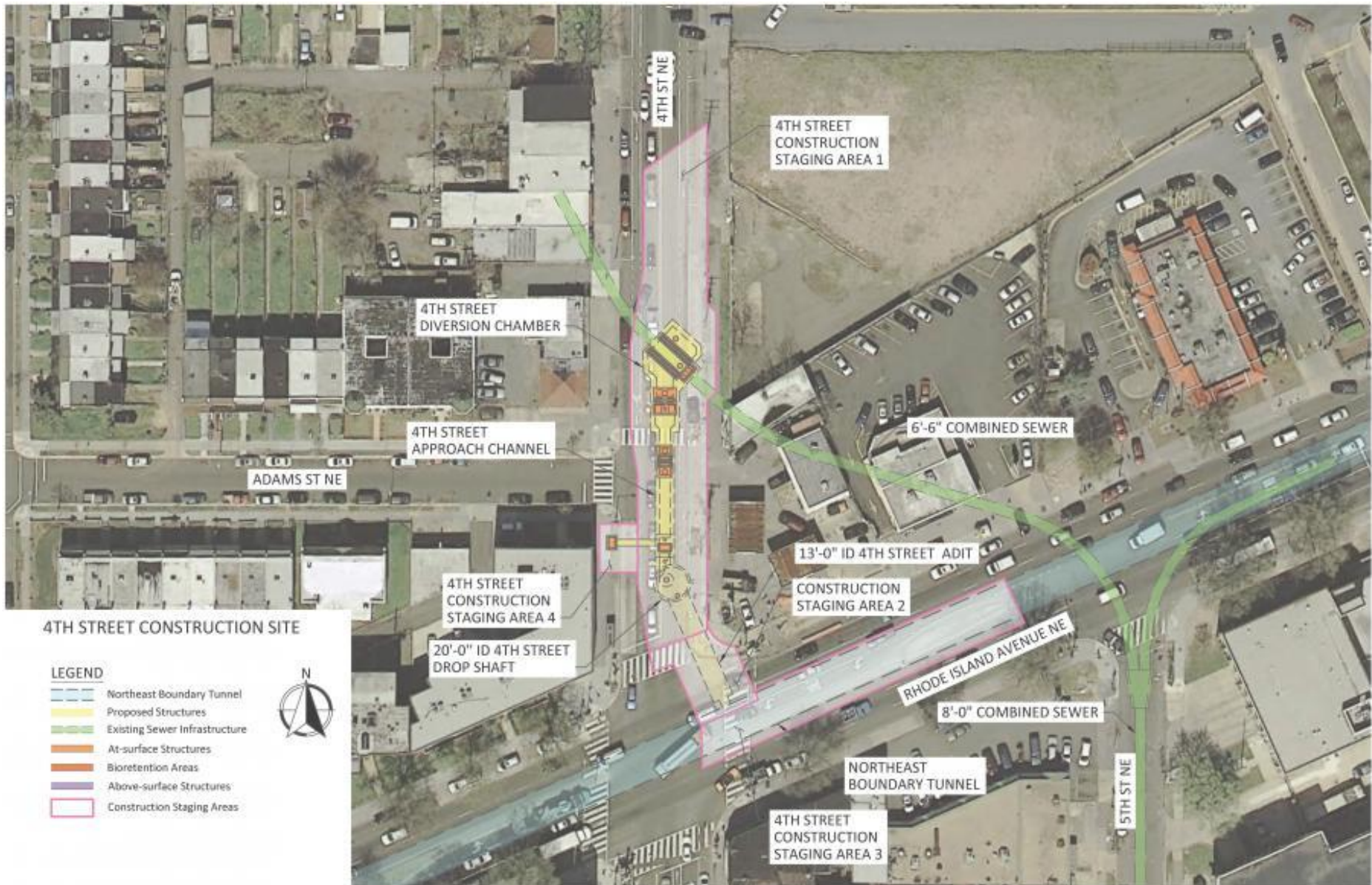
**Rhode Island Ave NE
Construction Site**



The green line = the Construction Site locations.

4th Street NE Construction Site Map

Shane Yanagisawa



4th Street NE Construction Site

Shane Yanagisawa



CONSTRUCTION WORK HOURS

Monday – Friday	7:00 AM to 11:00 PM
Saturday	7:00 AM to 5:00 PM
Construction End Date	Summer 2021

What's Completed?

Shane Yanagisawa

- Excavation of the drop shaft which is approximately 100 feet deep with an inside diameter of 23 feet.
- The soil freeze system is operating. The soil freeze system hardens the ground to support excavation work.
- The flume piping is now inserted into the existing sewer so that temporary bypass pumping is no longer necessary.



View down
the drop shaft



Soil freeze system
behind noise barriers

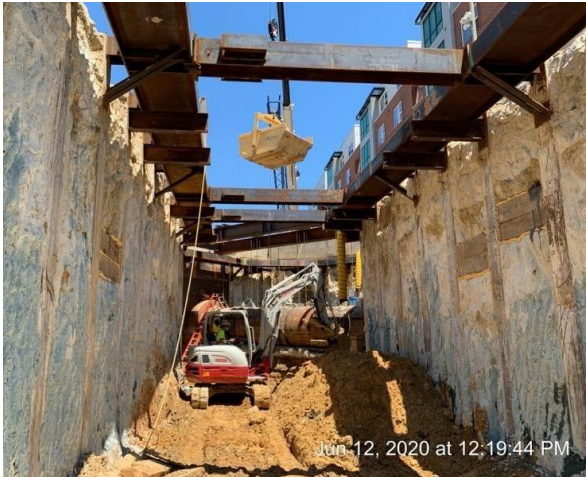


Flume serving as the temporary
bypass of the existing sewer system

What's Next: Summer 2020 Construction Activity

Shane Yanagisawa

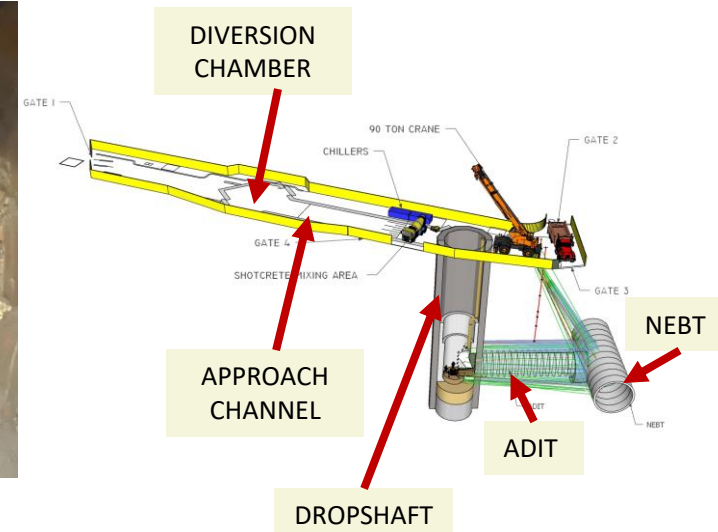
- Excavate the adit
- Excavate the Near Surface Structures– the diversion chamber and approach channel



Excavating the approach channel



Excavating the adit

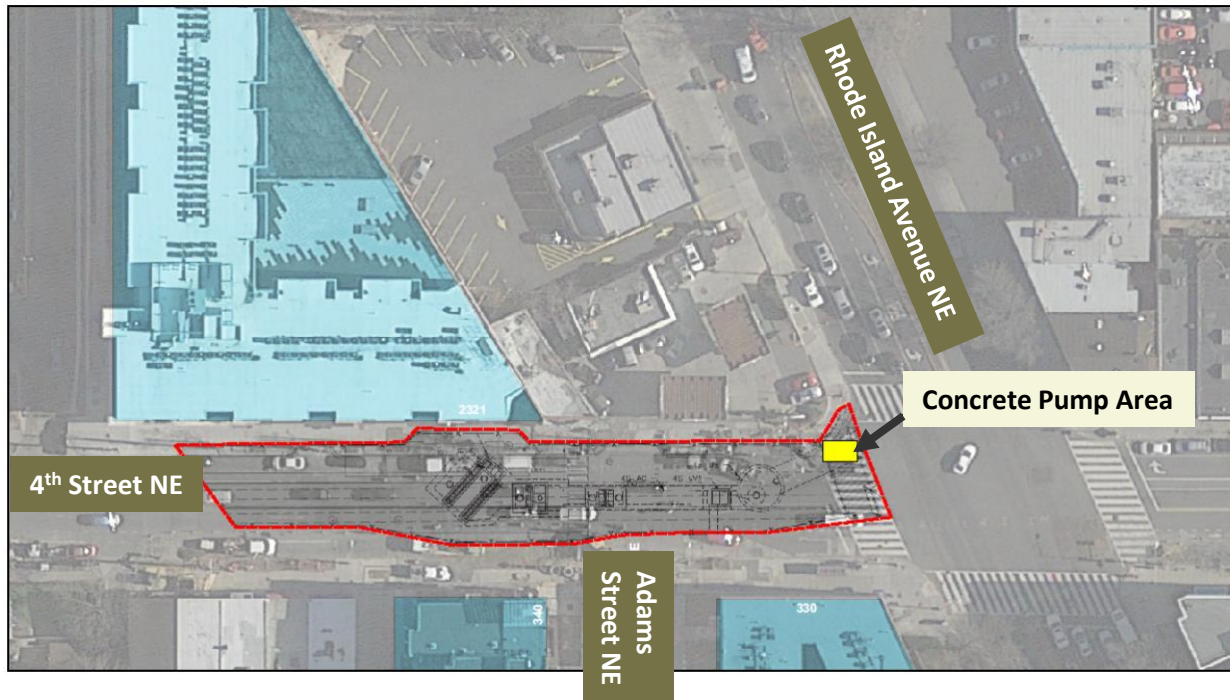


Map of the diversion facility

Noise Reduction Measures

Gabe Illingworth

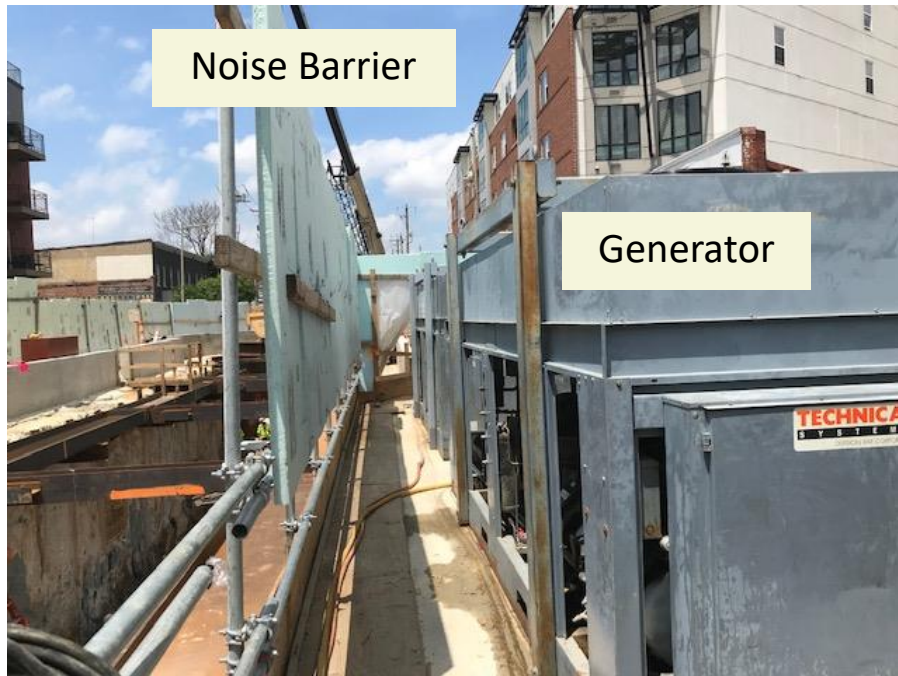
- Much of the nighttime work (7:00 PM – 11:00 PM) will occur within the dropshaft, approximately 100 feet underground.
- Support equipment at the surface will be used as minimally as possible during nighttime hours.
- Surface equipment that generates significant noise levels will be positioned furthest away from residents.



The Red Line =
Construction
Site Outline

Noise Reduction Measures

Gabe Illingworth



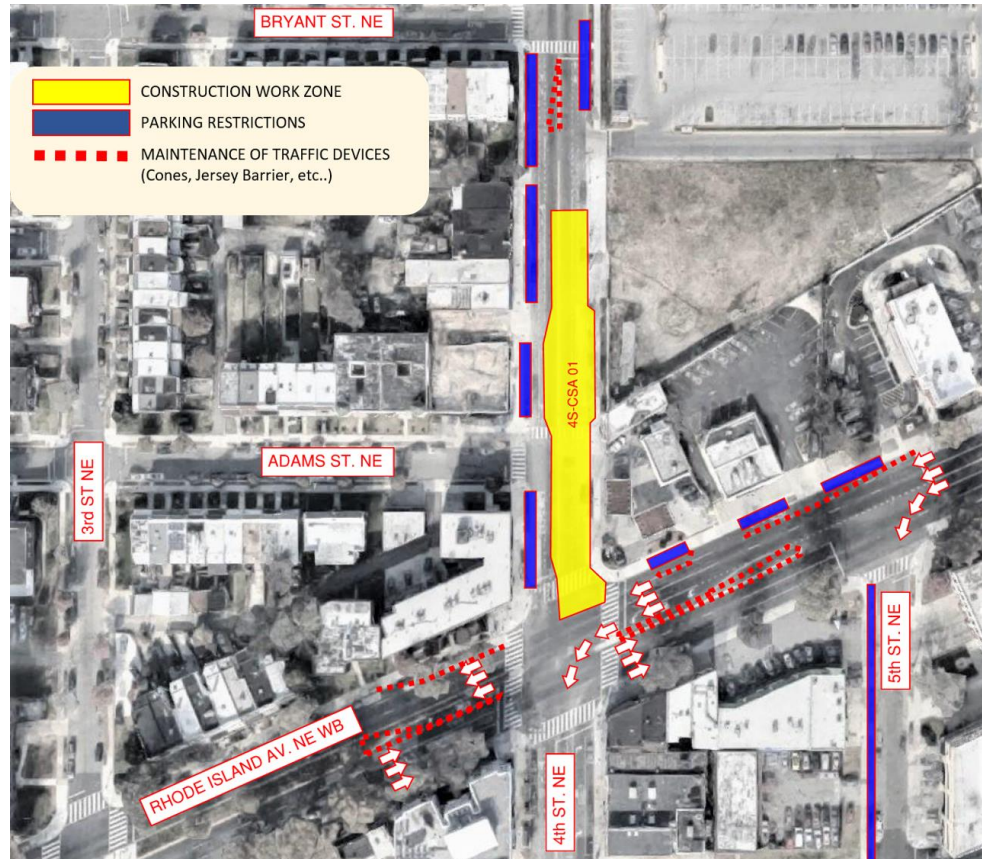
- Sound dampening noise barriers erected near noise generating machines, such as generators.
- Noise and vibration monitoring will be conducted 24/7 to ensure limits are not exceeded.



- The shotcrete pump will not be in continuous use. When support equipment will be needed, the equipment will be covered with noise barriers.

4th Street NE Construction Site: Traffic Pattern

Matt Wolniak



4TH STREET NE CONSTRUCTION SITE

TRAFFIC PATTERN:

The traffic pattern will change in 2021.

MAIN IMPACT:

4th Street NE closed to northbound traffic between Rhode Island Avenue NE and Bryant Street NE.

4th Street NE Construction Site: Pedestrian Detour

Matt Wolniak



4TH STREET NE CONSTRUCTION SITE – Pedestrian Detour

PEDESTRIAN DETOUR:	The pedestrian detour will continue into 2021.
MAIN IMPACT:	Pedestrian path provided around the construction site.

Instrumentation Installation on Rhode Island Avenue NE

Matt Wolniak

- **Extensometers** (deep borehole monitors that measure soil displacement) will be installed along Rhode Island Ave NE between 5th Street NE and 3rd Street NE
- A Geotechnical Drill Rig (pictured to the right) will be used to perform the work and will occupy portions of the parking lanes along Rhode Island Ave NE
- Parking restrictions will be in place during work hours
- Work hours will be from 9:30 AM – 3:30 PM and the road will be restored during non-work hours.

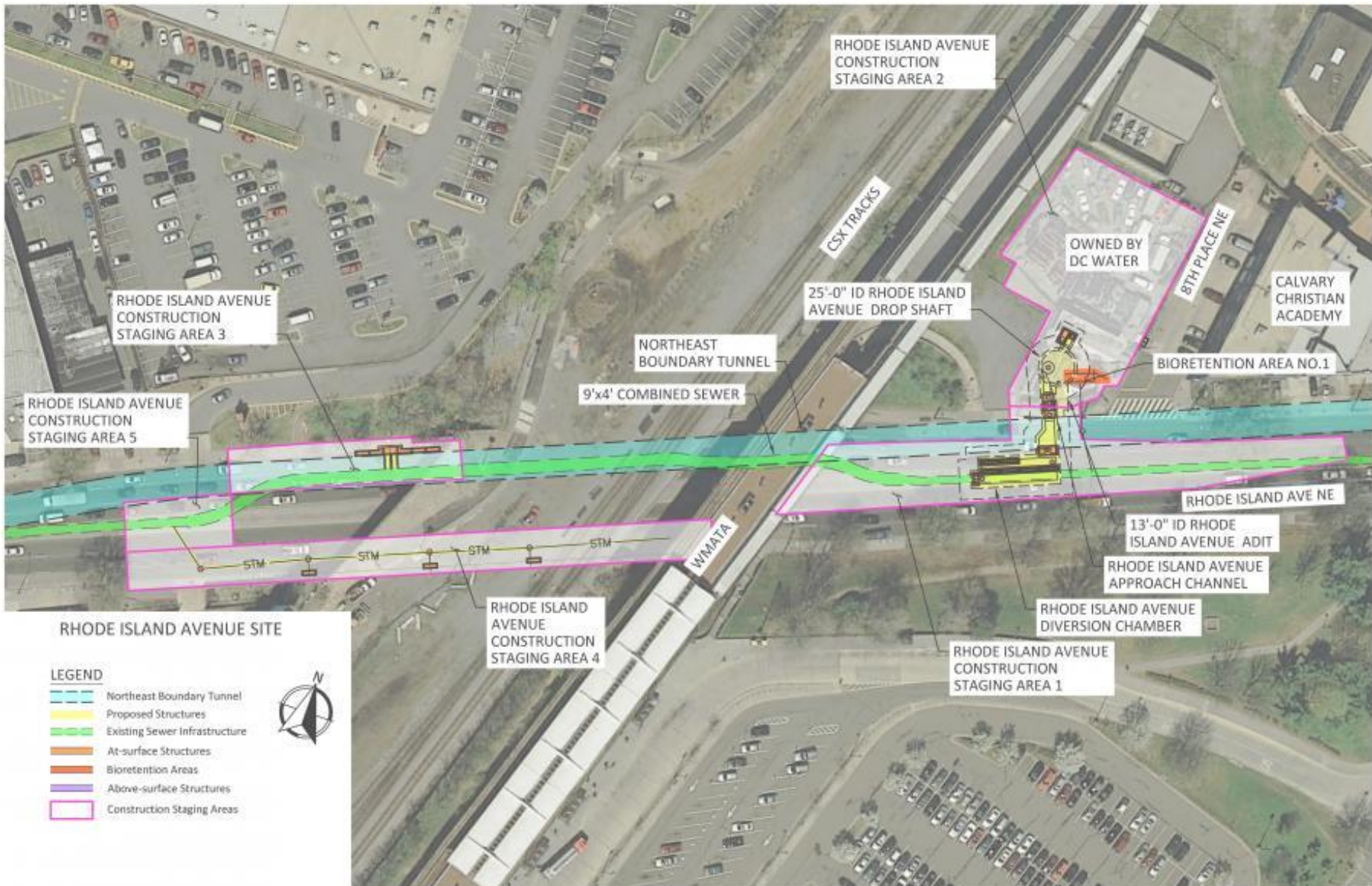


View of a Geotechnical Drill Rig

Note: Other developers and Verizon are also working in the area which will restrict the daytime parking on Rhode Island Avenue NE eastbound from west of 4th Street to east of 5th Street NE as result of their work.

Rhode Island Avenue NE Construction Site Map

Shane Yanagisawa



Rhode Island Avenue NE Construction Site

Shane Yanagisawa



CONSTRUCTION WORK HOURS

Monday - Friday	7:00 AM to 7:00 PM
Saturday	7:00 AM to 5:00 PM
Construction End Date	Fall 2022

What's Completed?

Shane Yanagisawa

- Installed 129 adit jet grout columns.
- Relocated utilities, including a water line.



View of the jet grout rig working on ground improvement for the adit

What's Next: Summer 2020 Construction Activity

Shane Yanagisawa

- **Now:** Installing secant piles for the approach channel and diversion chamber
- **Next:** Jet grouting inside the secant piles for the approach channel and diversion chamber



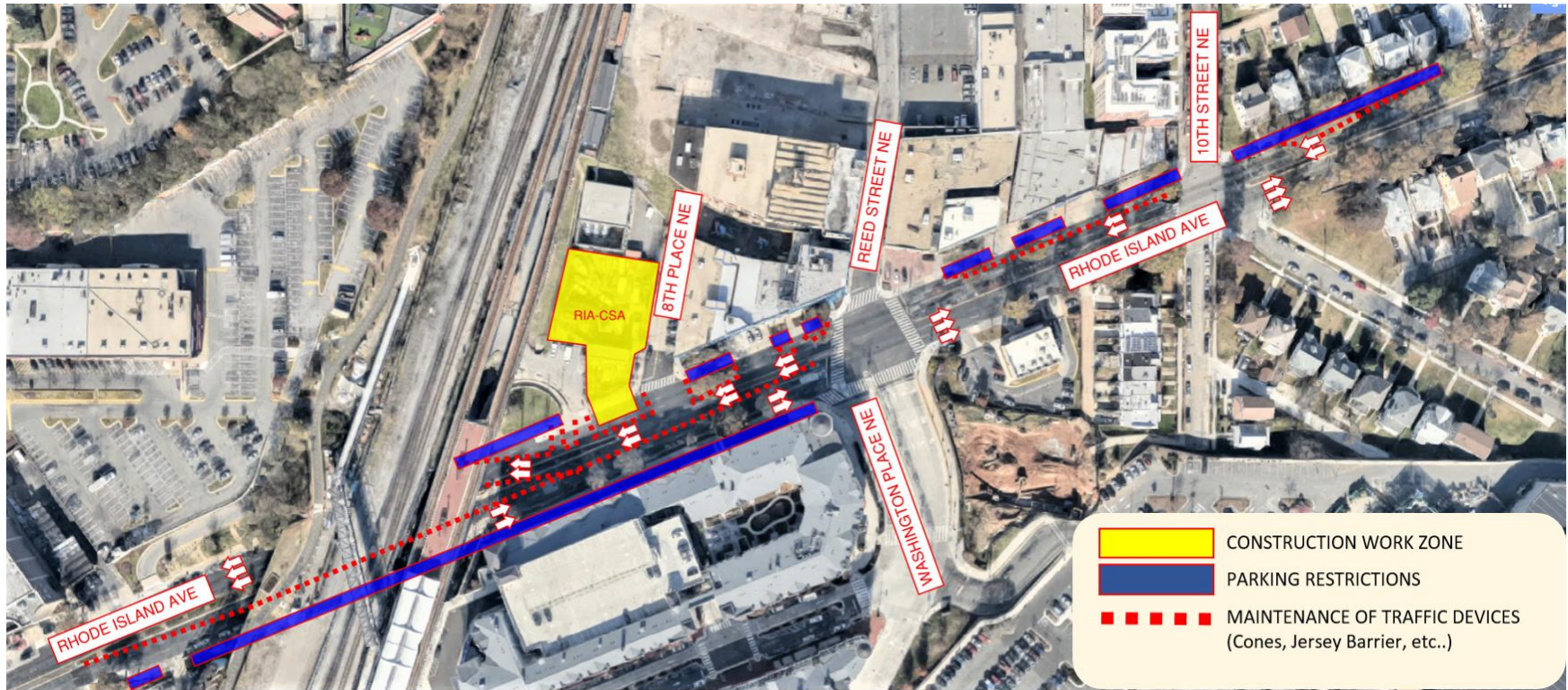
Setting secant guide wall formwork



View of the drill rig used for installing secant piles

Rhode Island Ave NE Construction Site: Traffic Pattern

Matt Wolniak



RHODE ISLAND AVENUE NE CONSTRUCTION SITE

TRAFFIC PATTERN:

The traffic pattern will change in the summer of 2020 and will remain 2 lanes in each direction.

MAIN IMPACT:

Changed from 3 lanes to 2 lanes in each direction on Rhode Island Avenue NE. **No left turns permitted from eastbound Rhode Island Ave to Reed Street and 10th Street.**

Rhode Island Ave NE Construction Site: Pedestrian Detour

Matt Wolniak



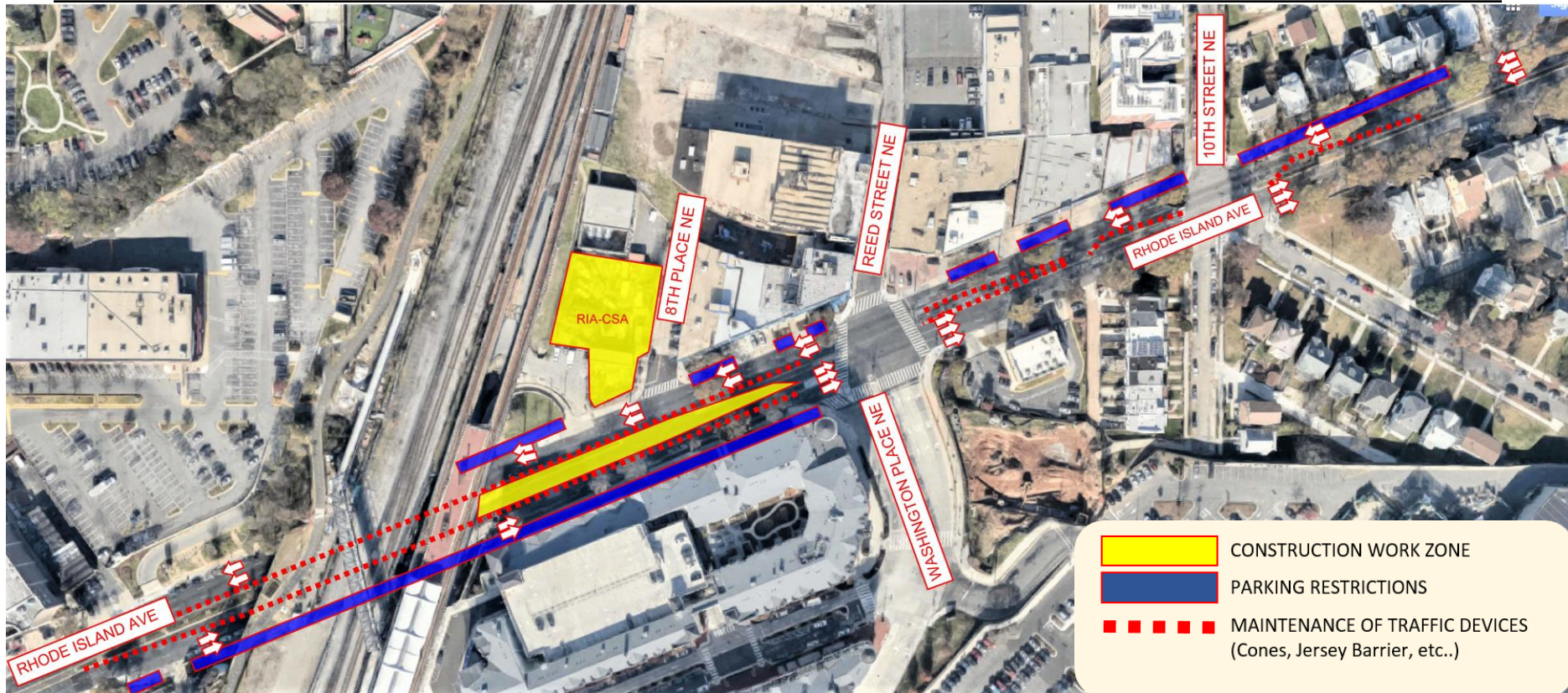
RHODE ISLAND AVENUE NE CONSTRUCTION SITE – Pedestrian Detour

PEDESTRIAN DETOUR: The pedestrian detour will remain through the summer of 2020.

MAIN IMPACT: Pedestrian path provided around the construction site.

Rhode Island Ave NE Construction Site: Upcoming Traffic Pattern

Matt Wolniak



RHODE ISLAND AVENUE NE CONSTRUCTION SITE

TRAFFIC PATTERN:

The traffic pattern will change to this configuration in approximately August 2020.

MAIN IMPACT:

Will remain 2 lanes in each direction on Rhode Island Avenue NE routed to go around new CSA in middle lanes **No left turns permitted from eastbound Rhode Island Ave to Reed Street and 10th Street.**

Rhode Island Avenue NE Main Street

Bill Levy



- DC Water/RIAMSNE partnership extended to 2020
- At suggestion of local businesses, CM McDuffie, DSLBD, the Mayor, and DC Water GM agreed to have program changed in 2020 to more direct assistance/grants
- Direct assistance to 17 businesses distributed based on proximity to construction site and impact.
- Business program questions:
 - Kyle Todd, Executive Director, RIAMSNE
 - kyle@riamainstreet.org
 - 202-808-9050



We will acknowledge questions from participants who are online and on the phone.



- **ONLINE PARTICIPANTS:** send your questions to the Host by using the Chat mode. You may also click on “Participants” to raise your hand for a question.
- **PHONE PARTICIPANTS:** press *9 to alert us that you want to ask a question. We will unmute you when it’s your turn to ask a question.



To receive email updates about NEBT construction, send an email to dccleanrivers@dcwater.com.

For More Info

- **24/7 NEBT Hotline:** (800) 988-6151
- **Email:** dccleanrivers@dcwater.com
- **Project Webpage:** dcwater.com/NEBT